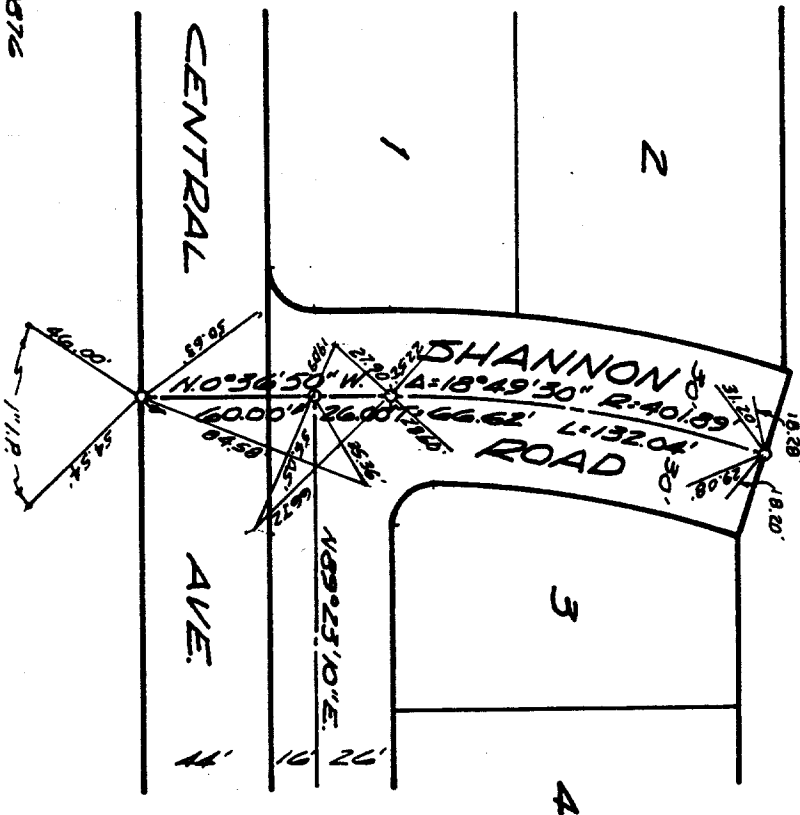


Street: SHANNON ROAD
7250 TIE

X-Street: OFFICIAL USE ONLY

CENTRAL AVE

Set 3/4" I.D. tagged D.E. 2076
at all points shown thus: O.
Ties are to studs set 1/17 top
of curb.



Scale 1"=50'

R.L.B

✕ FD. Ramset Nail on T/C
■ FD. "C" Nail on T/C

● FD. LD. & TK. on T/C
○ Set LD. & TK. on T/C

Scale:
Date: JULY 29, 1965
Drawn by:
W.O.: 64-174
F.B.: 559

OFFICIAL TIE PLAT
CITY OF RIVERSIDE

These ties are for the purpose of perpetuating the found
monumentation. No claim is made as to the relationship of
the points or lines shown hereon to true boundary locations.

TRACT 3025

Sheet 1 of 3
File No.: