

Scale: 1" = 30'
 Date: 08/20/98
 Drawn by: KGE
 W.O.:
 F.B.:

OFFICIAL TIE PLAT

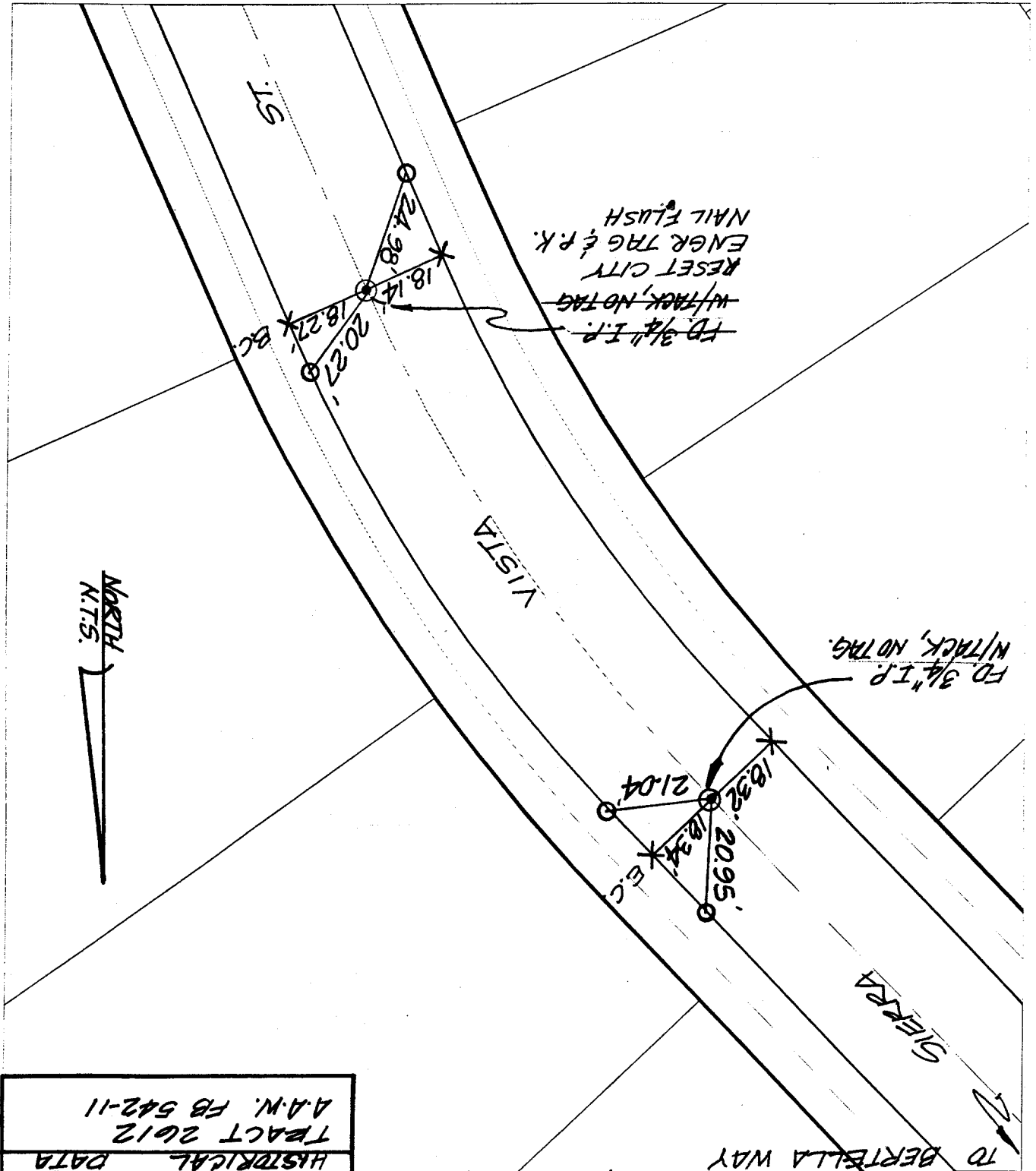
CITY OF RIVERSIDE

These ties are for the purpose of perpetuating the found monumentation. No claim is made as to the relationship of the points or lines shown hereon to true boundary locations.

File No.:
 Sheet 1 of 1

Street: ~~730 N. TIE~~ SIERRA VISTA STREET
 X-Street: B.C AND E.C. S. OF BERTELLA
 OFFICIAL USE ONLY

- × FD. Ramset Nail on T/C
- FD. "C" Nail on T/C
- FD. LD. & TK. on T/C
- Set LD. & TK. on T/C



HISTORICAL DATA
 TRACT 2012
 A.A.W. FB 542-11

SWING & TRANSIT TIES