

F.B.:  
W.O.:  
Drawn by: KGE  
Date: 08/20/98  
Scale: 1" = 30'

# OFFICIAL TIE PLAT

## CITY OF RIVERSIDE

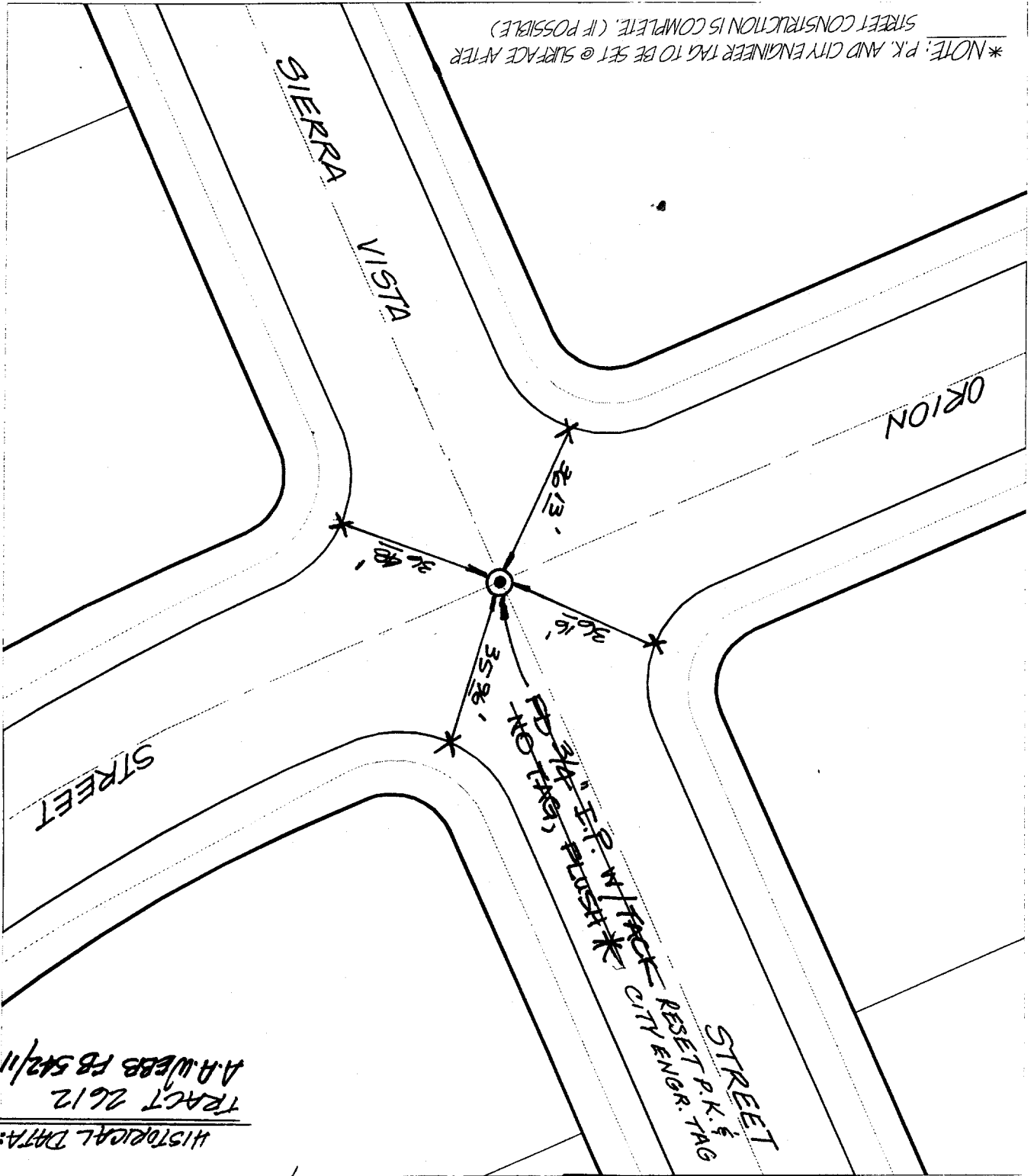
These ties are for the purpose of perpetuating the found  
monumentation. No claim is made as to the relationship of  
the points or lines shown hereon to true boundary locations.

File No.:  
Sheet 1 of 1



Street: ~~235111~~ SIERRA VISTA STREET  
X-Street: ORION STREET  
ORION STREET

- × FD. Ramset Nail on T/C
- FD. "C" Nail on T/C
- FD. LD. & TK. on T/C
- Set LD. & TK. on T/C



HISTORICAL DATA:  
TRACT 2612  
A.A. WEBB FB 5/12/11

SWING TIES