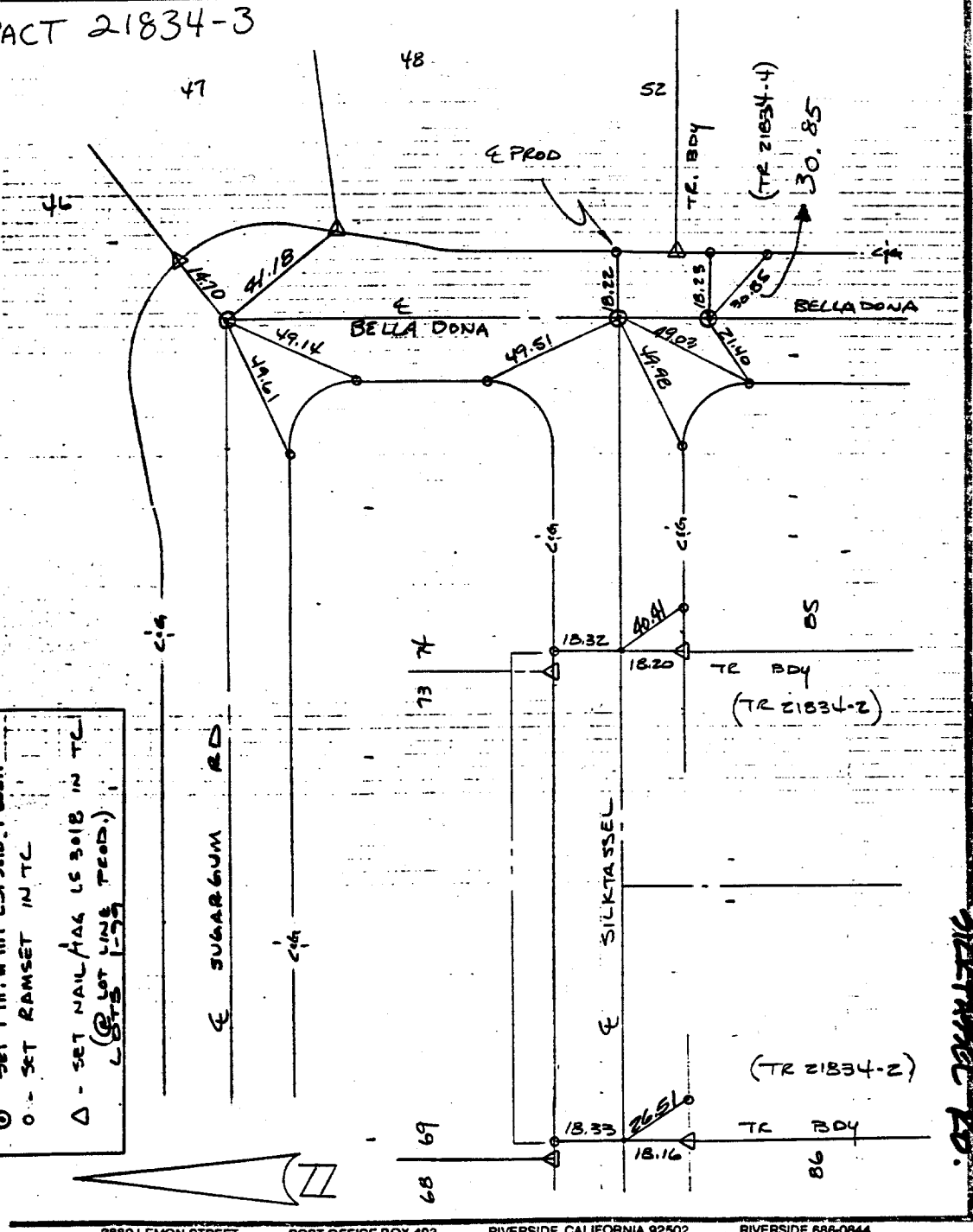


SURVEY OF 4 TIES (TR 21834-3) F.B. 10972/45
 FOR U.S. HOMES W.O. No. 10972 Date 9-6-89
 SURVEY PARTY CANLIA@221 STEAD CAGCON REF. _____ AM. _____

TRACT 21834-3

SURVEY NOTES

○ SET 1" I.P. W RR. LS. 3418. FLUSH
 ○ SET RAMSET IN TC
 △ SET NAIL/HAG LS 3018 IN TC
 (SET FOR TYPING FEED.)



3880 LEMON STREET POST OFFICE BOX 493 RIVERSIDE, CALIFORNIA 92502 RIVERSIDE 688-0844

- × FD. Ramset Nail on T/C
- FD. LD. & TK. on T/C
- FD. "C" Nail on T/C
- Set LD. & TK. on T/C

Scale:
 Date:
 Drawn by:
 W.O.:
 F.B.:

OFFICIAL TIE PLAT CITY OF RIVERSIDE

These ties are for the purpose of perpetuating the found monumentation. No claim is made as to the relationship of the points or lines shown hereon to true boundary locations.

Sheet 1 of 1
 File No.:

Street: SILKTASSEL
2319.77E
 X-Street: BELLA DONA
 OFFICIAL USE ONLY