

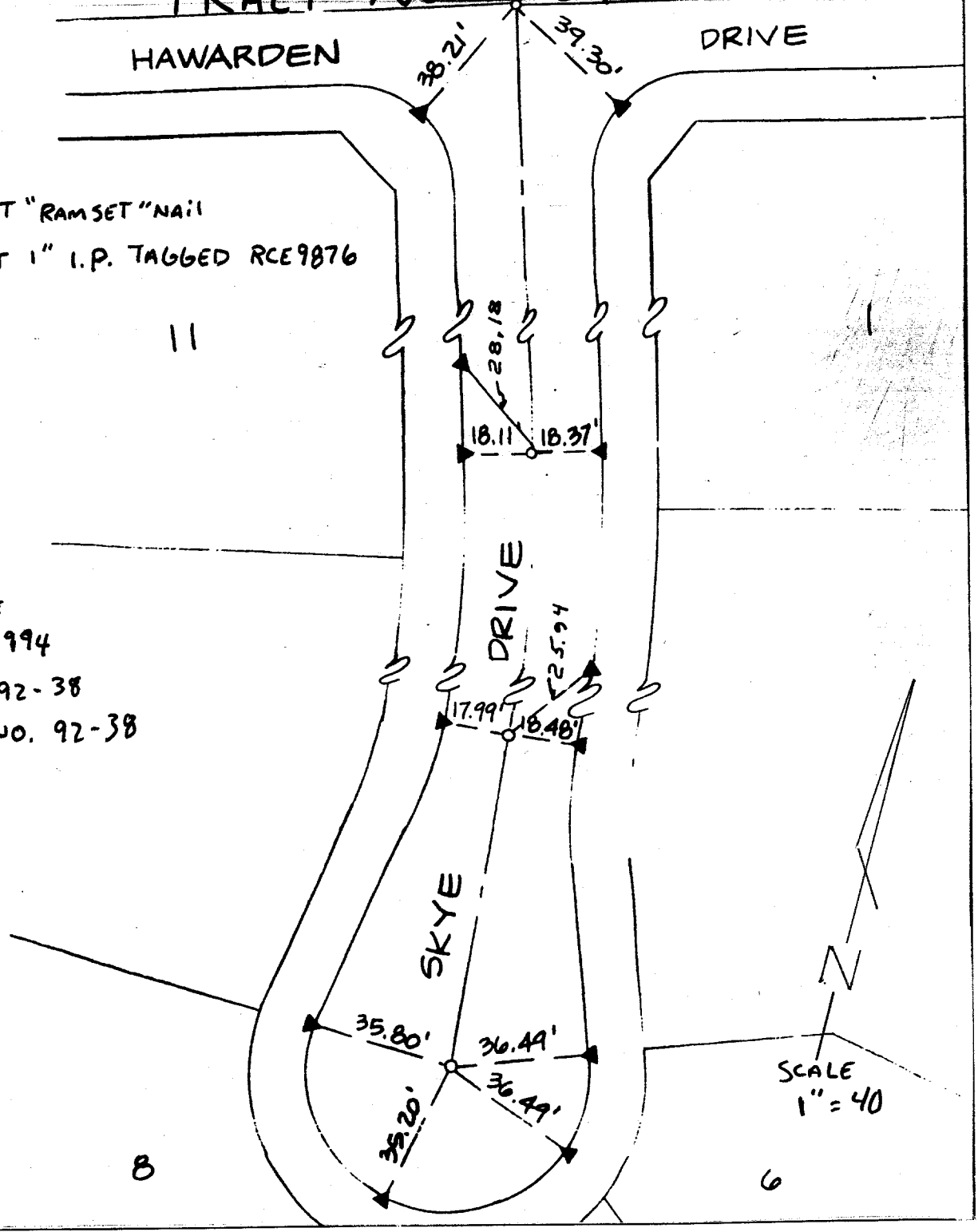
TRACT NO. 7757-1

HAWARDEN

DRIVE

▲ = SET "RAMSET" NAIL
 ○ = SET 1" I.P. TAGGED RCE9876

DATE
 Aug 1994
 W.O. 92-38
 FILE NO. 92-38



- ✕ FD. Ramset Nail on T/C
- FD. LD. & TK. on T/C
- FD. "C" Nail on T/C
- Set LD. & TK. on T/C

Street: **SKYE Dr.**
 7343.71E
 OFFICIAL USE ONLY
 X-Street: **Culde Sac**

Scale: 1" = 40'
 Date: Aug 1994
 Drawn by: Dr 2
 W.O.: 92-38
 F.B.:

OFFICIAL TIE PLAT
 CITY OF RIVERSIDE

These ties are for the purpose of perpetuating the found monumentation. No claim is made as to the relationship of the points or lines shown hereon to true boundary locations.

Sheet 1 of 1
 File No.: 92-38