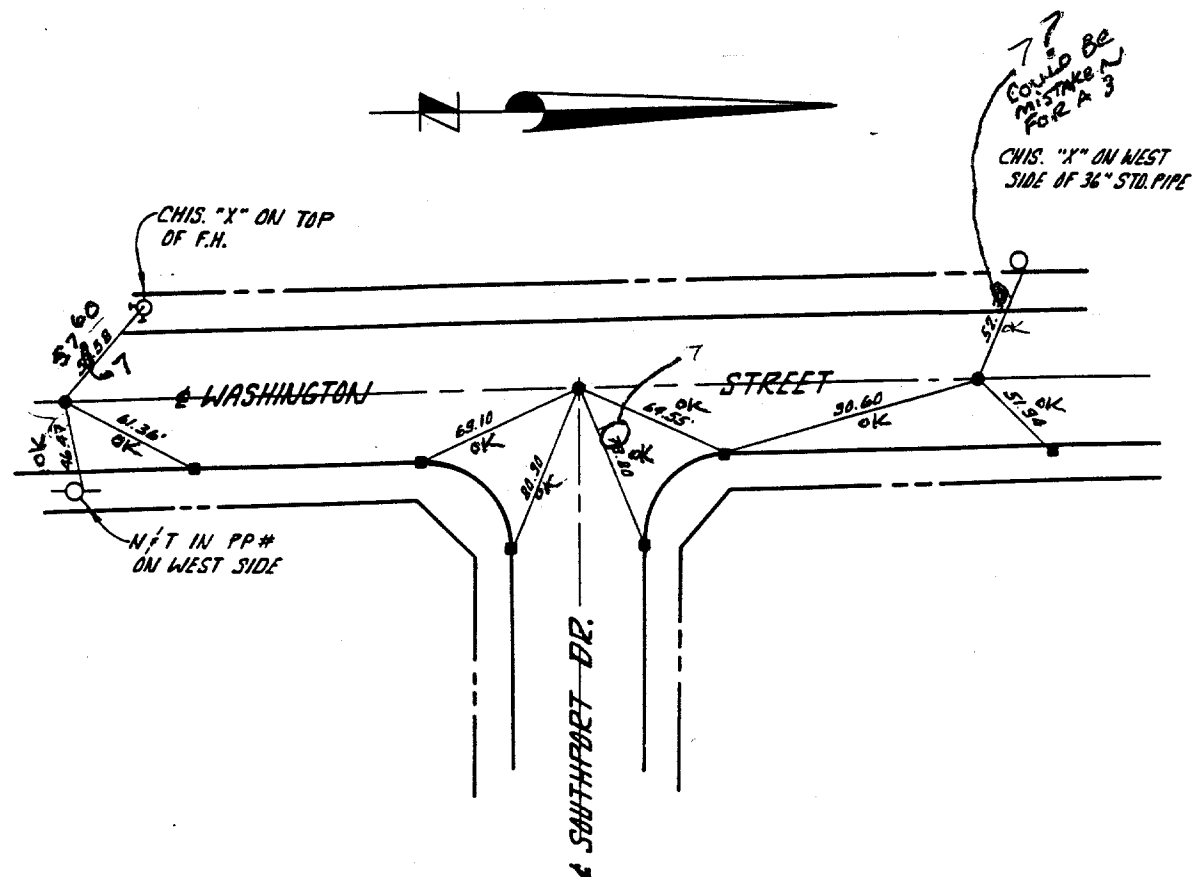


TRACT 21010



GABEL, COOK & BECKLUND
Environmental • Hydrology • Planning
Civil Engineering • Surveying • Structures
647 North Main Street, Suite 1-B, Riverside, Calif. 92501
Telephone (714) 788-8092

TIES



- INDICATES SET 1" I.P. FLUSH - R.C.E. 20740
- INDICATES SET LEAD / TACK

EUROPEAN T'S ACCEPTABLE

SOUTHPART DR @ WASHINGTON ST

Street: SOUTHPART DR. OFFICIAL USE ONLY X-Street: WASHINGTON ST.

- ✕ FD. Ramset Nail on T/C
- FD. LD. & TK. on T/C
- FD. "C" Nail on T/C
- Set LD. & TK. on T/C

OFFICIAL TIE PLAT
CITY OF RIVERSIDE

These ties are for the purpose of perpetuating the found monumentation. No claim is made as to the relationship of the points or lines shown hereon to true boundary locations.

Scale:
Date:
Drawn by:
W.O.:
F.B.:

Sheet 1 of 1
File No.: