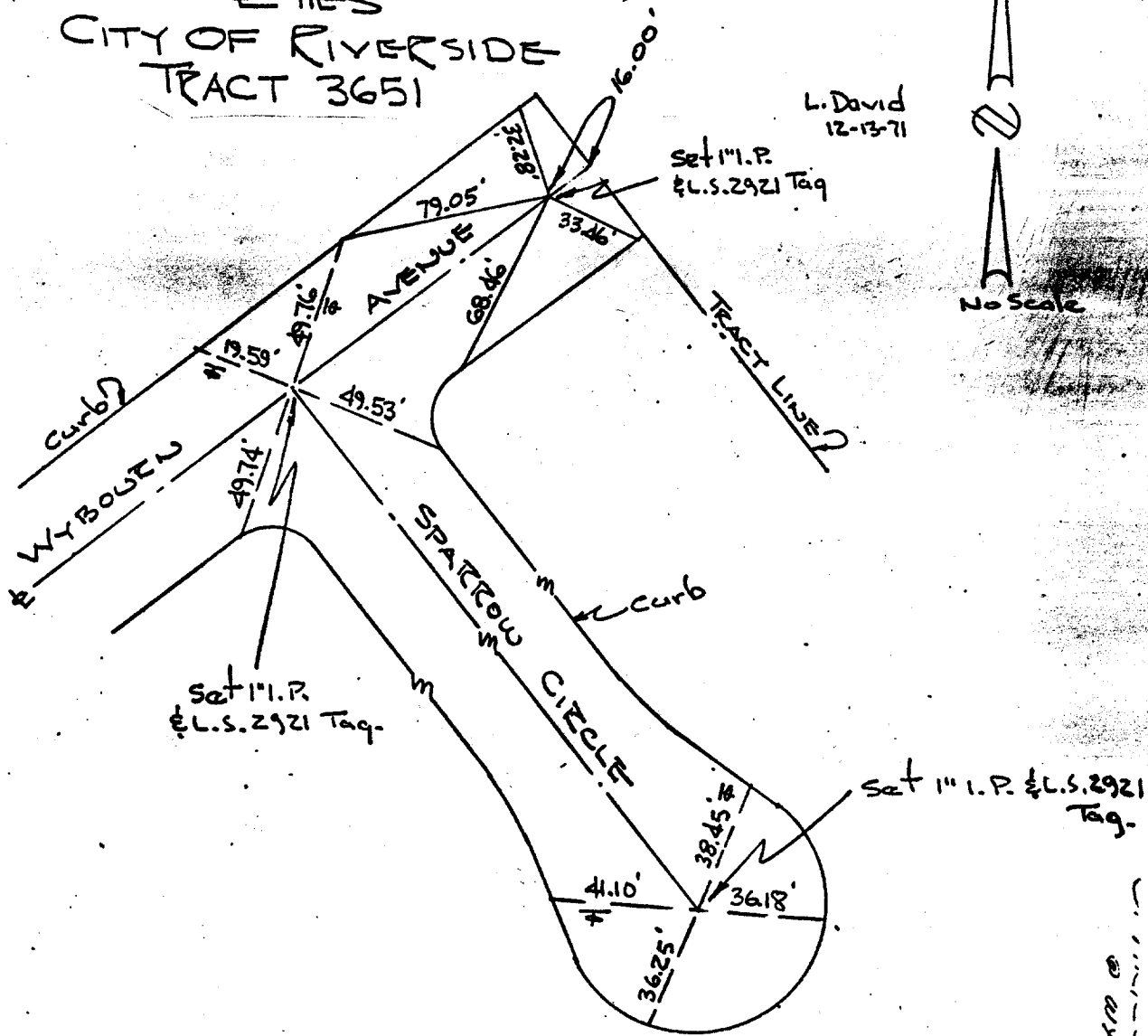


V. T. N. L. S. 2921

ETIES  
CITY OF RIVERSIDE  
TRACT 3651



Note:  
All ties are lead & tack set  
in top of curb.

V. T. N.  
Frank W. Richardson L.S. 2921

Street: Sparrow Circle  
7358 TIF  
X-Street: Wybourn Ave  
OFFICIAL USE ONLY

× FD. Ramset Nail on T/C  
■ FD. "C" Nail on T/C

● FD. LD. & TK. on T/C  
○ Set LD. & TK. on T/C

Scale:

Date:

Drawn by:

W.O.:

F.B.:

### OFFICIAL TIE PLAT CITY OF RIVERSIDE

These ties are for the purpose of perpetuating the found  
monumentation. No claim is made as to the relationship of  
the points or lines shown hereon to true boundary locations.

Sheet 1 of 1

File No.: