

737.715

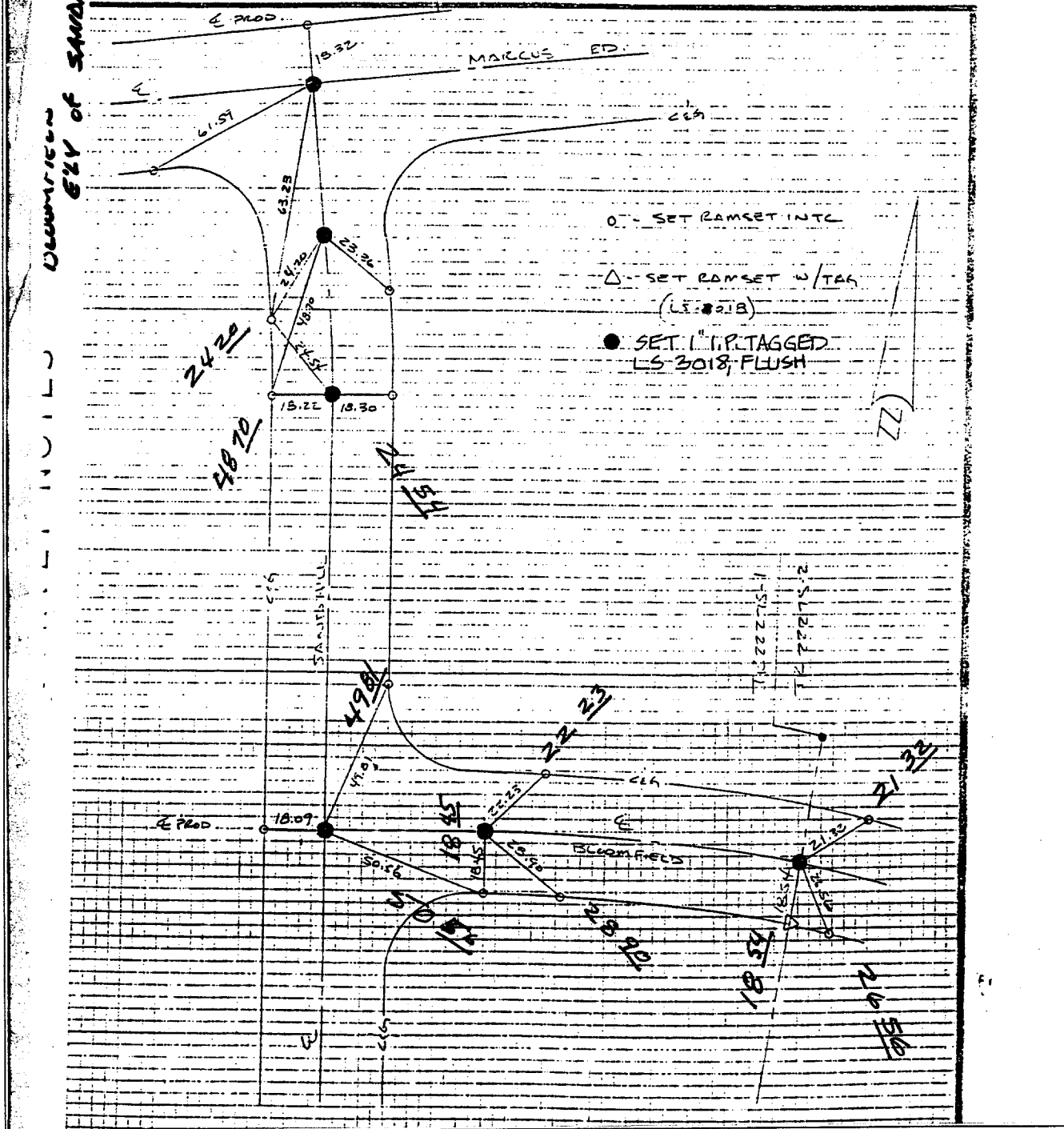
ARCHITECTURE LANDSCAPE ARCHITECTURE

SURVEY OF E TIES (R 22275-1) SHEET 2 OF 8 SHEETS

FOR VAN DAELF W.O. No. 11495 Date 3-9-90

SURVEY PARTY LEUNACORZI TENNETI REF. AM.

737.715



Street: BLOOMFIELD
737.715

X-Street: E'LY SANDHILL
OFFICIAL USE ONLY

- × FD. Ramset Nail on T/C
- FD. LD. & TK. on T/C
- FD. "C" Nail on T/C
- Set LD. & TK. on T/C

Scale:

Date:

Drawn by:

W.O.:

F.B.:

OFFICIAL TIE PLAT

CITY OF RIVERSIDE

These ties are for the purpose of perpetuating the found monumentation. No claim is made as to the relationship of the points or lines shown hereon to true boundary locations.

Sheet 2 of 8

File No.: