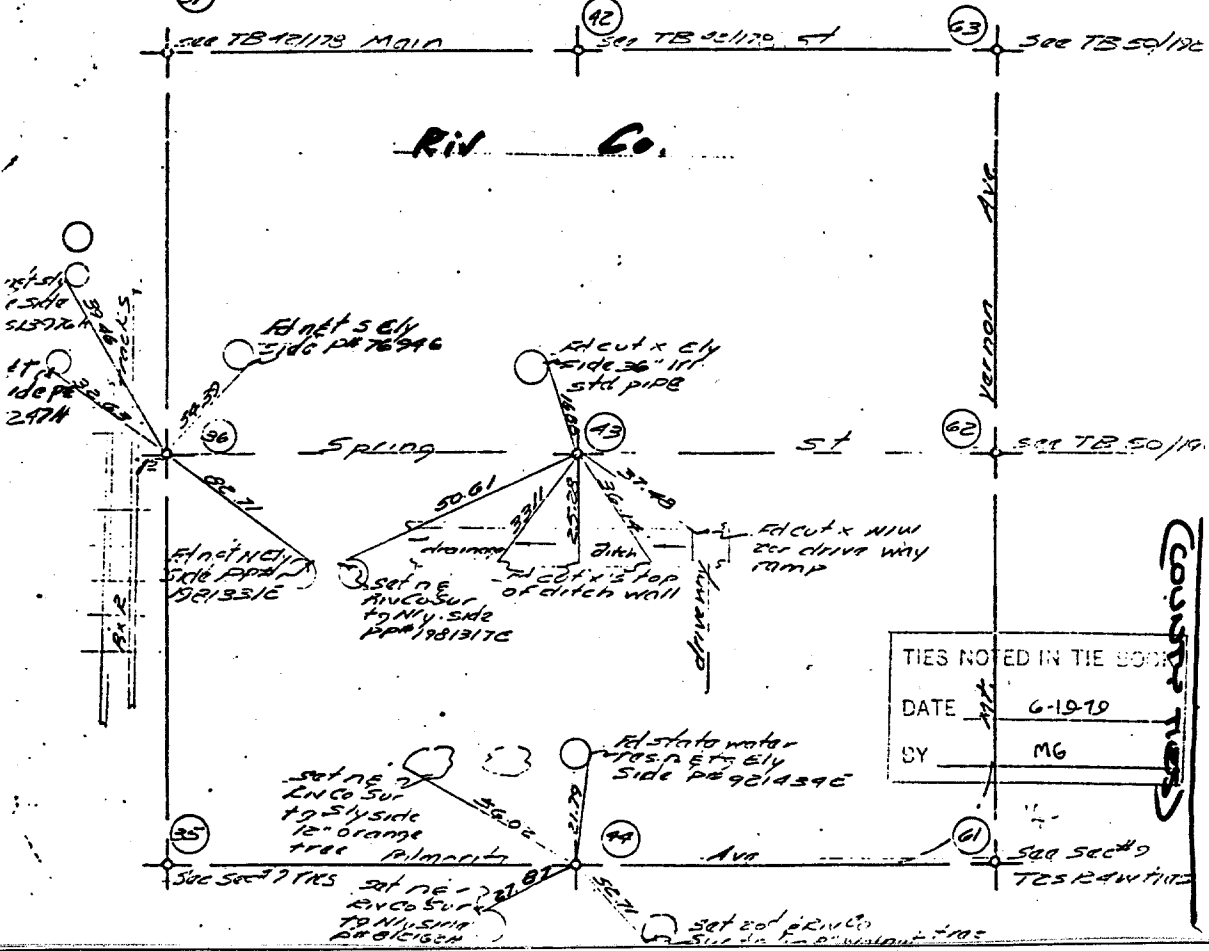


SEC. 8 TWP. 25 RGE. 9W TB 54/31
 DATE 10-27-78 TEMP. 75° CLEAR W.O. NO. 2000000
 PARTY City of Riverside AGENCY BEAUTIFUL
 48 1/2" ID IP rusty dn 03 W state dept water res
brass to 5/8" Cor SEC 8 no REF given set 204
Riv Co Sur to flush
 49 FD 2"x2" hub & tk over 1/2" ID IP dn 15 data for Ct. Sec # 8
per FB 50013 1957 2" 1/2" hub f tk flush cor falls
on N/4 E P Spring St
 36 FD 1/2" ID IP dn 2' top flared m to for w/lay 1/4 Cor SEC 8
fall 1' dn
Riv Co Sur to flush FD 1/2" ID IP W / - - - flush
TA 7-17-78
 37 FD 1/2" IP dn 15 TB 42/178 NW Cor Sec # 8
 42 FD brass disc stamped 1/2" dn 03 per TB 42/178
1/2" ID

7372.71F

Street: SPRING ST.
PALM RITA AVE.
 OFFICIAL USE ONLY
 X-Street: B/F MT. VERNON
CALIFORNIA

Duplicate
 TB 531102
S.B. Co.



- ✕ FD. Ramset Nail on T/C
- FD. LD. & TK. on T/C
- FD. "C" Nail on T/C
- Set LD. & TK. on T/C

Scale:
 Date:
 Drawn by:
 W.O.:
 F.B.:

OFFICIAL TIE PLAT
CITY OF RIVERSIDE

These ties are for the purpose of perpetuating the found
 monumentation. No claim is made as to the relationship of
 the points or lines shown hereon to true boundary locations.

Sheet 1 of 1
 File No.: