

TB5/57

B5/057

RIV. COUNTY.
F.B. 788P. 28

T2S R4W SEC. 7

SPRING ST.

Street: SPRING ST.
7374.TIF

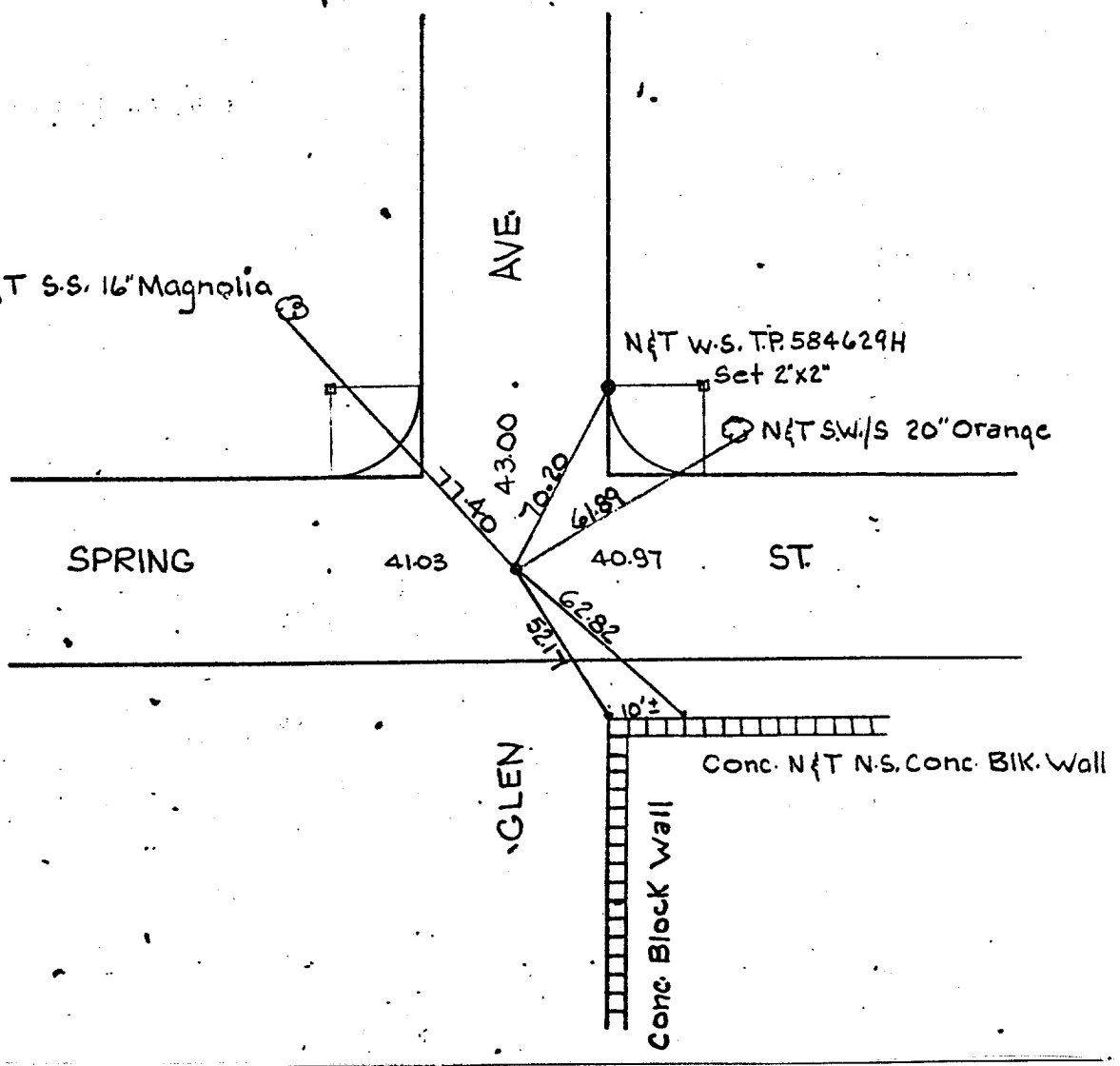
X-Street: GLEN AVE.
OFFICIAL USE ONLY



N&T S-S. 16" Magnolia

N&T W-S. TP. 584629H
Set 2'x2"

N&T SW/S 20" Orange



- ✕ FD. Ramset Nail on T/C
- FD. "C" Nail on T/C

- FD. LD. & TK. on T/C
- Set LD. & TK. on T/C

Scale: _____
 Date: _____
 Drawn by: _____
 W.O.: _____
 F.B.: _____

OFFICIAL TIE PLAT

CITY OF RIVERSIDE

These ties are for the purpose of perpetuating the found monumentation. No claim is made as to the relationship of the points or lines shown hereon to true boundary locations.

Sheet 1 of 1
 File No.: _____