

J.F. Davidson Associates, Inc.  
ENGINEERING SURVEYING PLANNING  
LANDSCAPE ARCHITECTURE

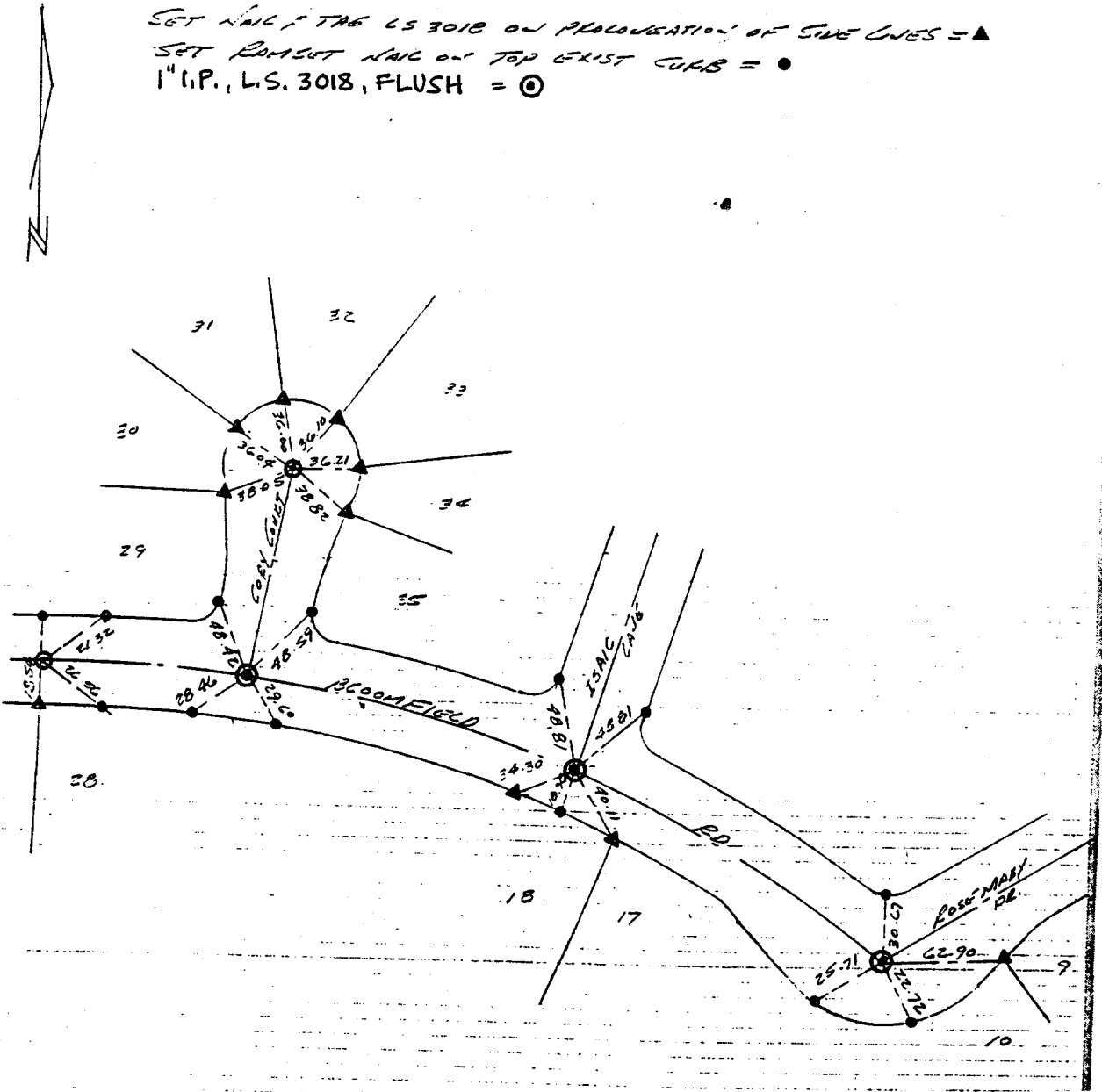
F.B. 11410/70

SURVEY OF CENTER MONUMENTS SHEET 5 OF 5 SHEETS

FOR STEPLING TR 22275-C W.O. No. 11410 Date 2-8-90

SURVEY PARTY ELLIS SACCAIDO MARTINEZ REF. \_\_\_\_\_ A.M. \_\_\_\_\_

SET NAIL TAG LS 3018 ON PROLONGATION OF SIDE LINES = ▲  
SET RAMSET NAIL ON TOP EXIST CURB = ●  
1" I.P., L.S. 3018, FLUSH = ○



- ✕ FD. Ramset Nail on T/C
- FD. LD. & TK. on T/C
- FD. "C" Nail on T/C
- Set LD. & TK. on T/C

Scale: \_\_\_\_\_  
 Date: \_\_\_\_\_  
 Drawn by: \_\_\_\_\_  
 W.O.: \_\_\_\_\_  
 F.B.: \_\_\_\_\_

# OFFICIAL TIE PLAT

## CITY OF RIVERSIDE

*These ties are for the purpose of perpetuating the found monumentation. No claim is made as to the relationship of the points or lines shown hereon to true boundary locations.*

Sheet **5** of **5**  
 File No.: \_\_\_\_\_

738.71/F

ISAIC LN.

Street: ISAIC LN

738.71/F

X-Street: OFFICIAL USE ONLY

BLOOMFIELD RD