

F.B.:

DR. BY: *PP*

DATE: 9.3.98

SCALE: 1"=40'

OFFICIAL THE PLAT CITY OF RIVERSIDE

CEG
CANTY ENGINEERING GROUP, INC.
CIVIL ENGINEERING - PLANNING - SURVEYING
2020 IDVA AVENUE, SUITE A-102, P.O. BOX 52050, RIVERSIDE, CA 92517
TEL (909) 683 - 5234 FAX (909) 683 - 5301

FILE NO: 1092-006

OF 9 SHEETS

6

SHEET

STREET: **ST. ANDREWS DR.**

7388.T1/F

X-STREET
OFFICE USE ONLY

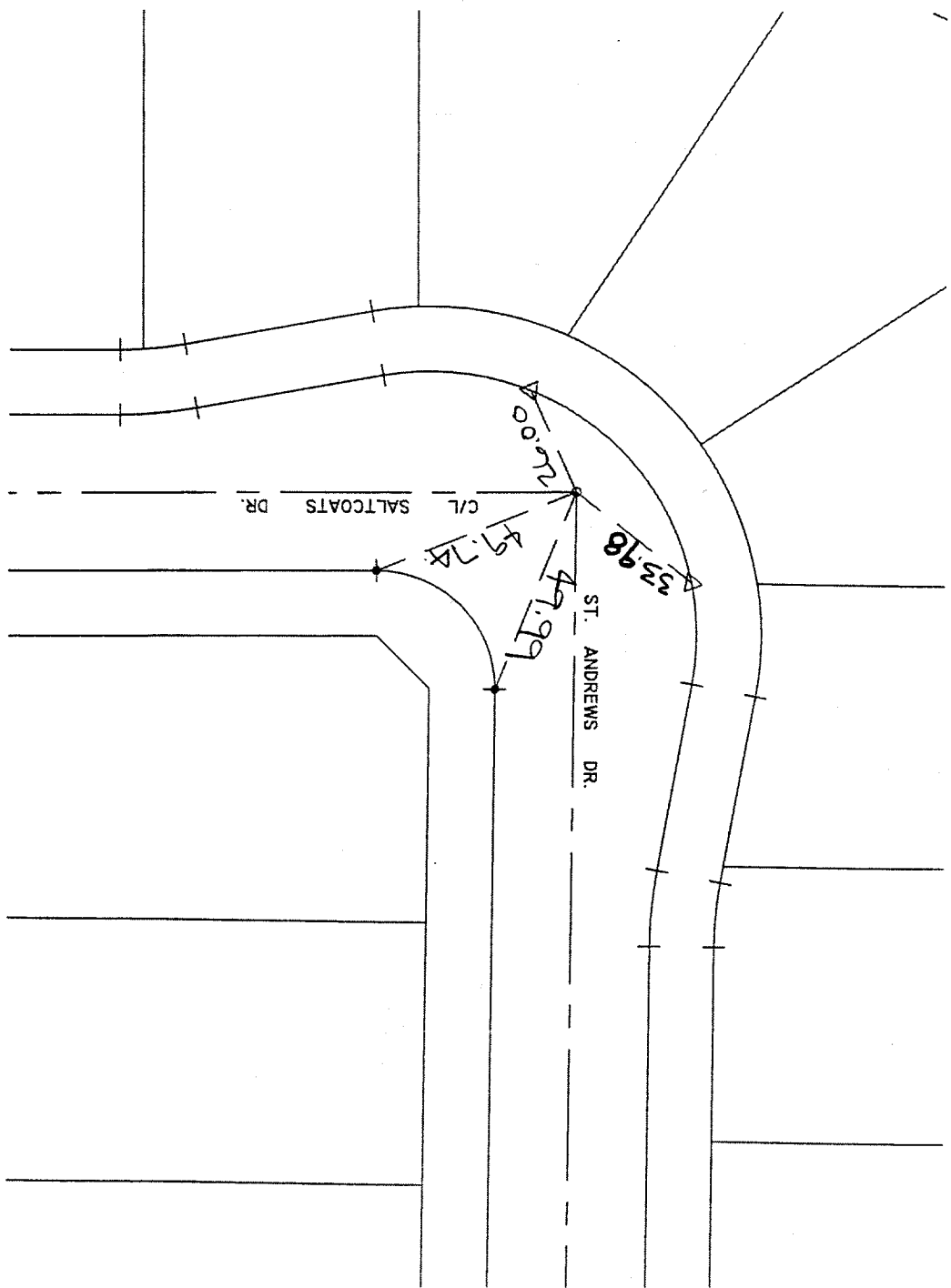
SALTCOATS DR.

LEGEND

- - SET 1" P.W./RCE 17550 PASTIC PLUG FLUSH
- - SET RAMSET NAIL ON T.C.
- △ - SET NAIL W/RCE 17550 TAG ON T.C.
- - SET SPIKE W/WASHER STAMPED RCE 17550 FLUSH



TR.27982-3



Review, verify 9-3-98