

F.B.:

DR. BY: PAP

DATE: 9.3.98

SCALE: 1"=40'

OFFICIAL THE PLAT CITY OF RIVERSIDE

CEG
CANTY ENGINEERING GROUP, INC.
CIVIL ENGINEERING - PLANNING - SURVEYING
2020 IDVA AVENUE, SUITE A-102, P.O. BOX 52050, RIVERSIDE, CA 92517
TEL (909) 683 - 5234 FAX (909) 683 - 5301

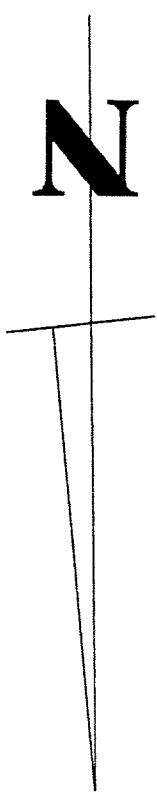
FILE NO: 1032.006
OF 9 SHEETS

SHEET
5

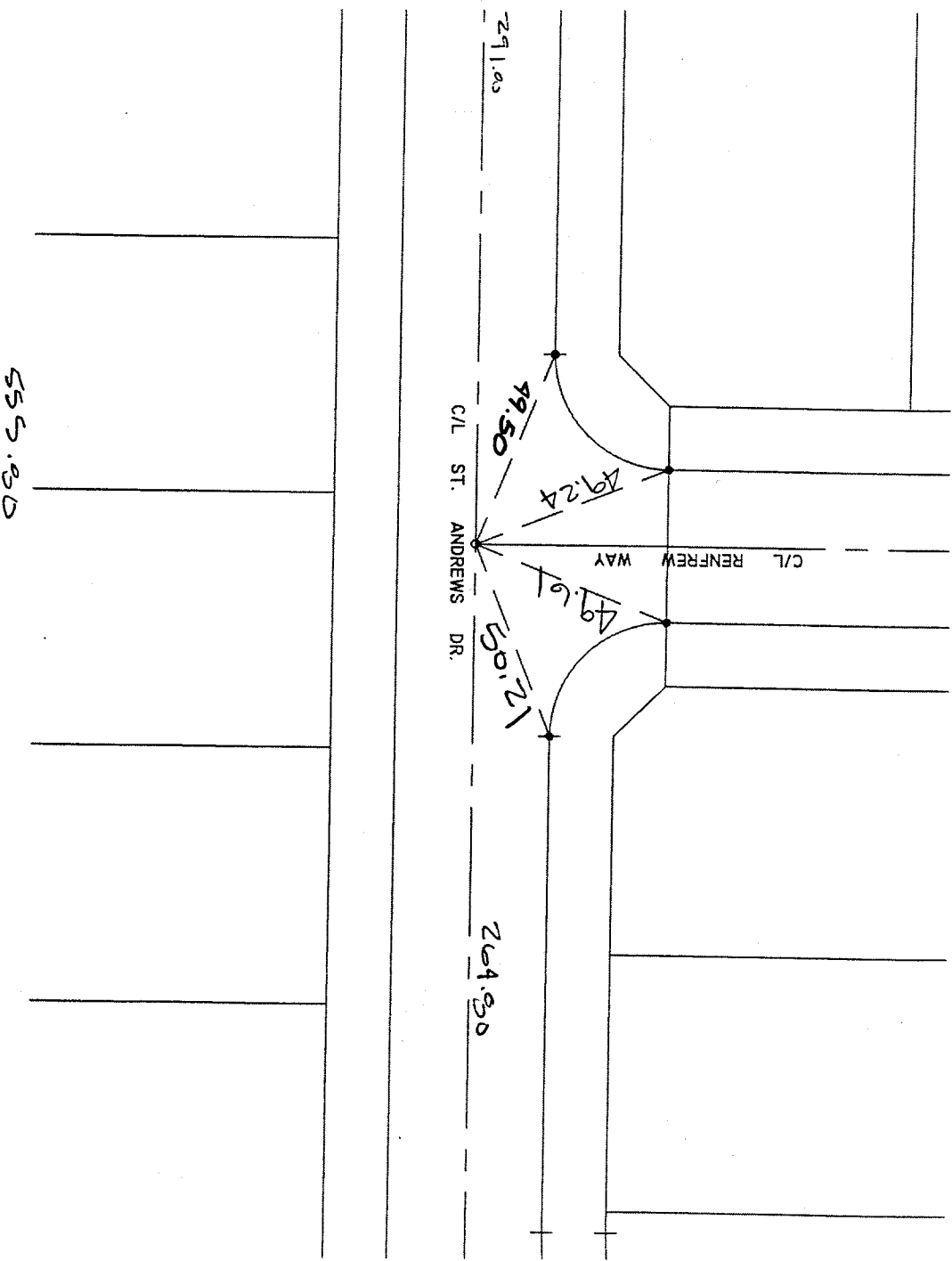
STREET: **ST. ANDREWS DR.** X-STREET **RENFREW WAY**
7389, T1F
OFFICE USE ONLY

LEGEND

- - SET 1 1/2" P.W./RCE 17550 PASTIC PLUG FLUSH
- - SET RAMSET NAIL ON T.C.
- △ - SET NAIL W/RCE 17550 TAG ON T.C.
- ◊ - SET SPIKE W/WASHER STAMPED RCE 17550 FLUSH



TR. 27982-3



found, correct 9-3-98