

740.71F



J.F. Davidson Associates, Inc.
ENGINEERING PLANNING SURVEYING
ARCHITECTURE LANDSCAPE ARCHITECTURE

FB. 11410/70

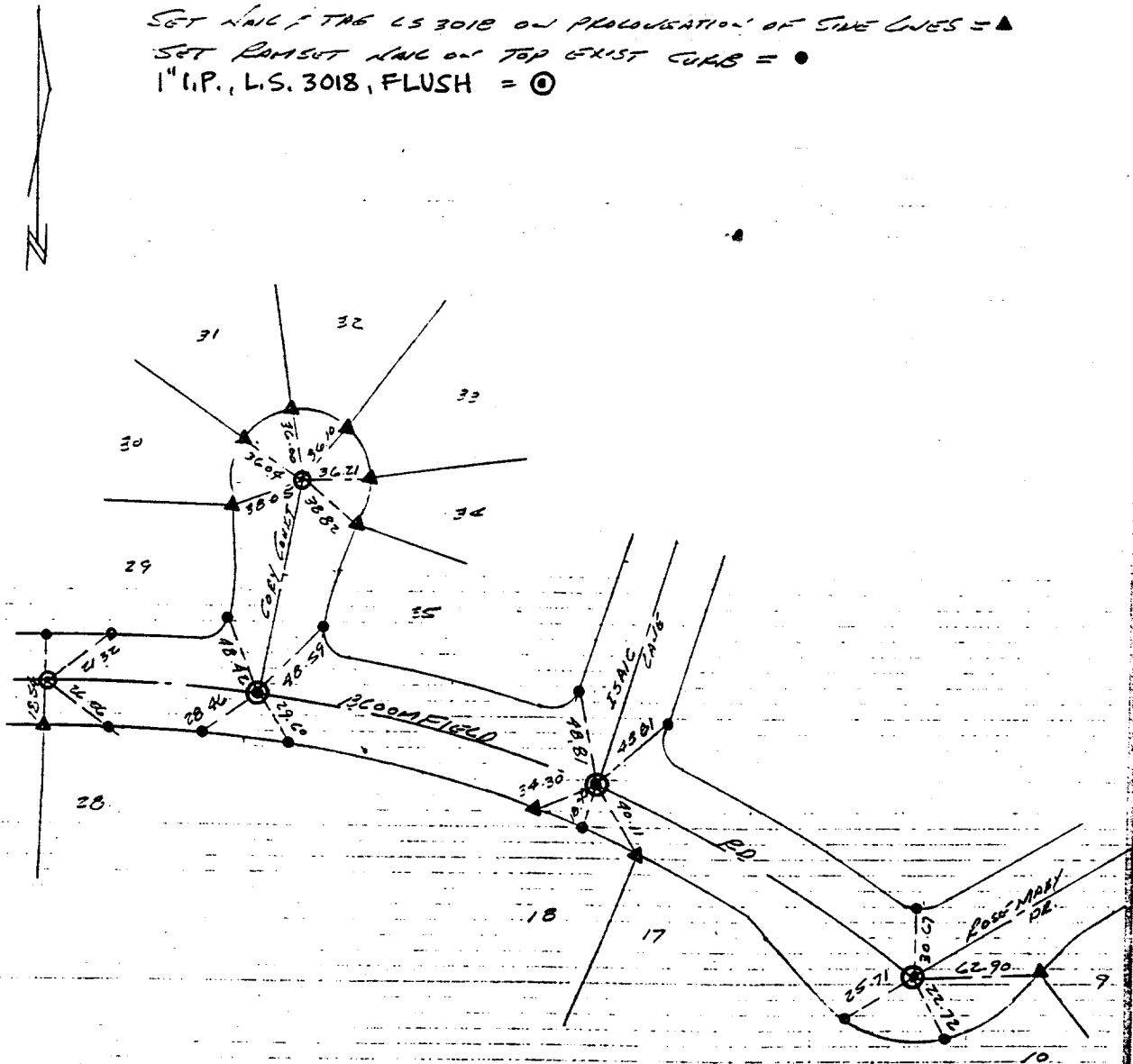
SURVEY OF CENTER MONUMENTS SHEET 5 OF 5 SHEETS

FOR STEPHENS TR 22275-2 W.O. No. 11410 Date 2-5-90

SURVEY PARTY ELLIS SARGADO MARTINEZ REF. _____ AM. _____

SET NAIL/TAG LS 3018 ON PROLONGATION OF SIDE LINES = ▲
SET RAMSET NAIL ON TOP EXIST CURB = ●
1" I.P., L.S. 3018, FLUSH = ○

ROSEMARY DR



× FD. Ramset Nail on T/C
■ FD. "C" Nail on T/C

● FD. LD. & TK. on T/C
○ Set LD. & TK. on T/C

Scale:
Date:
Drawn by:
W.O.:
F.B.:

OFFICIAL TIE PLAT

CITY OF RIVERSIDE

These ties are for the purpose of perpetuating the found monumentation. No claim is made as to the relationship of the points or lines shown hereon to true boundary locations.

Sheet **5** of **5**
File No.:

Street: BLOOMFIELD RD
740.71F

X-Street: CORY CT.
OFFICIAL USE ONLY