

# TRACT NO. 21638-2 CENTERLINE TIES

Street: STEPHANIE ST. X-Street: WHITING WAY  
HYDROTIF OFFICIAL USE ONLY



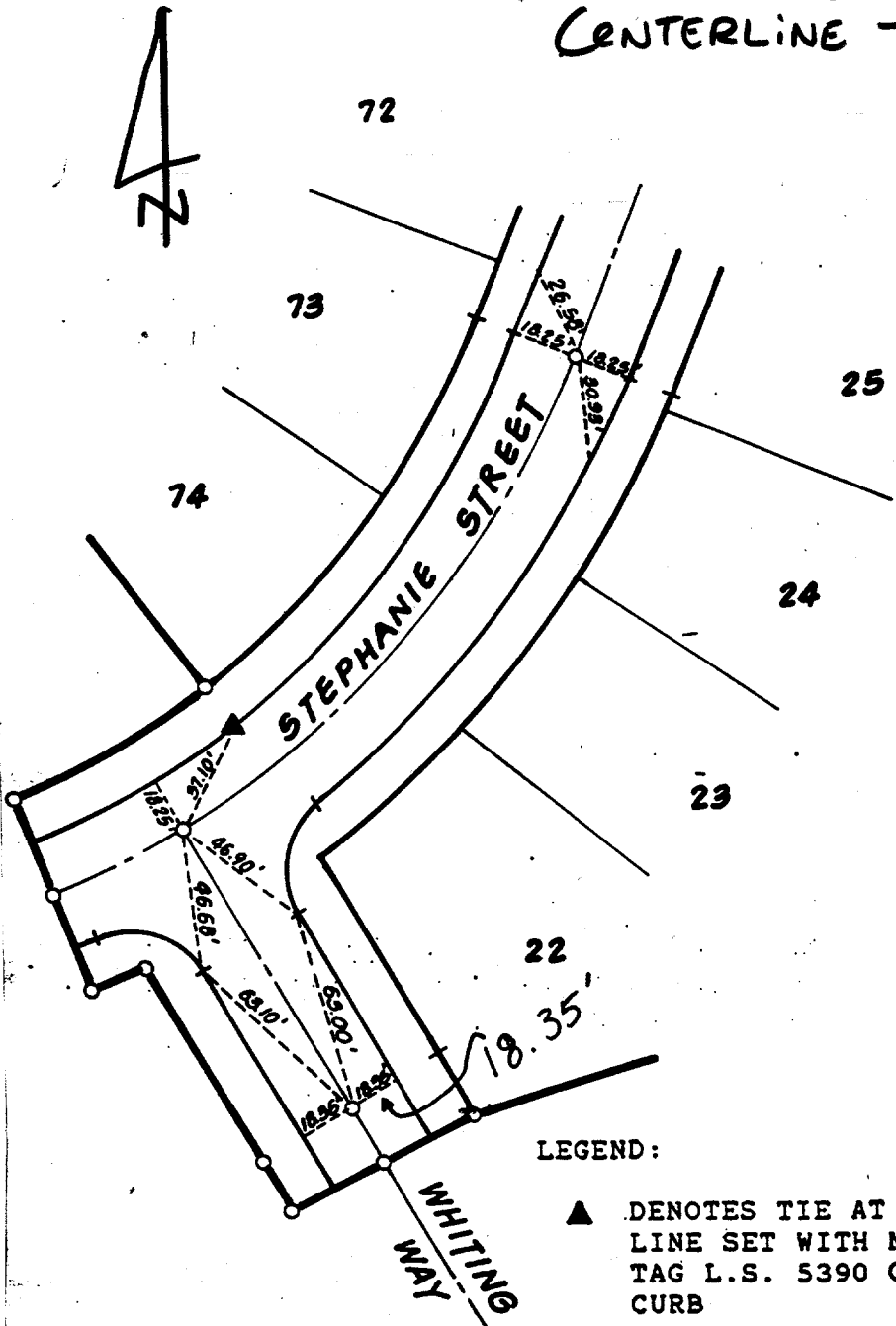
ADKAN ENGINEERS  
 6830 Airport Drive  
 Riverside, California 92504  
 714989-0241

DATE: 4/6/90 SCALE: 1"=60'

GRIFFITH HOMES

JOB NO: 3057 CLIENT: GRIFFITH HOMES

CENTERLINE TIES



LEGEND:

▲ DENOTES TIE AT PROPERTY LINE SET WITH NAIL AND TAG L.S. 5390 ON TOP OF CURB

NOTE: (ALL OTHER TIES SHOWN ARE SET WITH L&T ON TOP OF CURB)

- ✕ FD. Ramset Nail on T/C
- FD. "C" Nail on T/C

- FD. LD. & TK. on T/C
- Set LD. & TK. on T/C

Scale: \_\_\_\_\_  
 Date: \_\_\_\_\_  
 Drawn by: \_\_\_\_\_  
 W.O.: \_\_\_\_\_  
 F.B.: \_\_\_\_\_

## OFFICIAL TIE PLAT CITY OF RIVERSIDE

*These ties are for the purpose of perpetuating the found monumentation. No claim is made as to the relationship of the points or lines shown hereon to true boundary locations.*

Sheet 1 of 1  
 File No.: \_\_\_\_\_