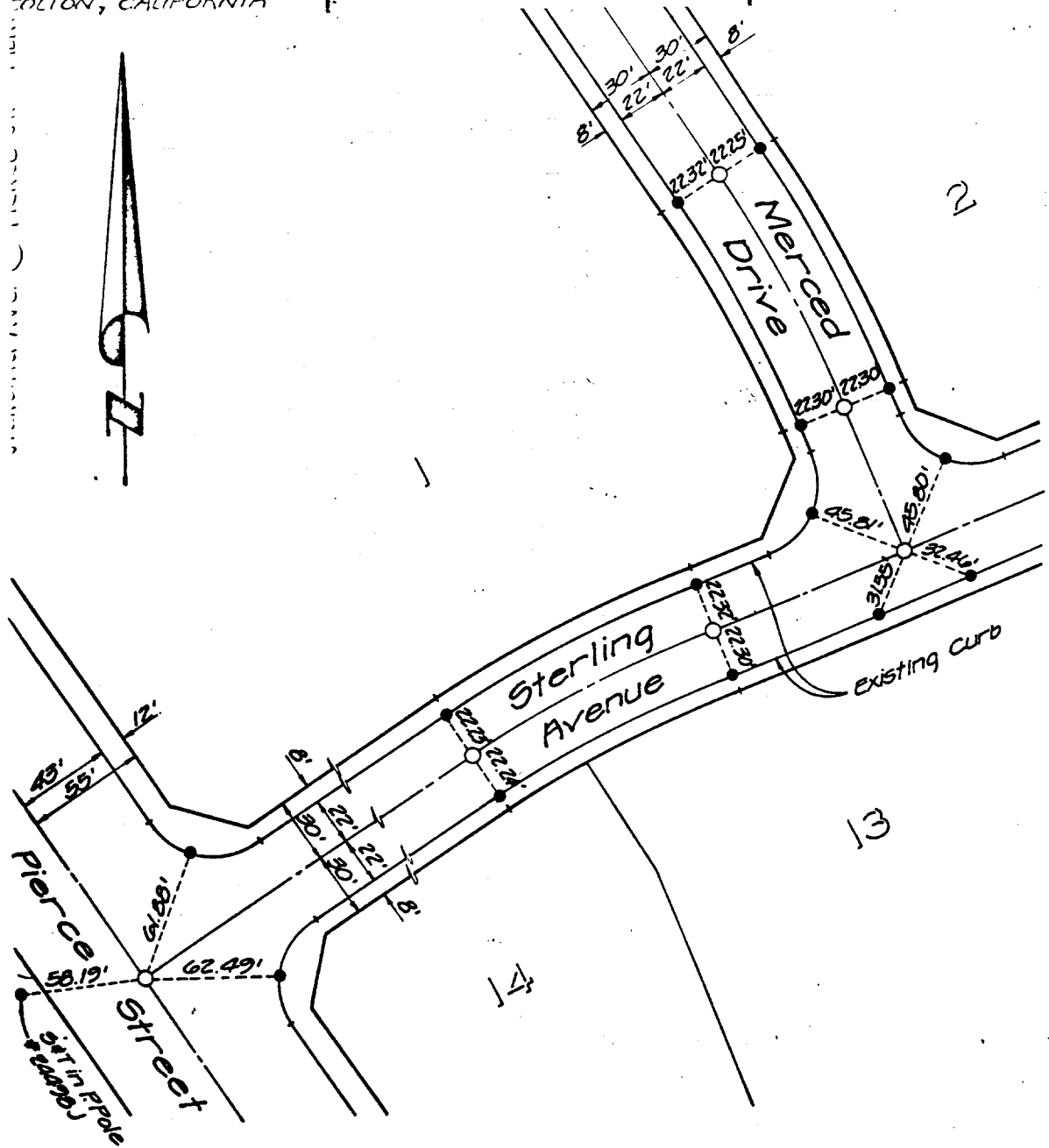


F. DAVIDSON ASSOCIATES  
 1200 S. MT. VERNON AVE.  
 SUITE "D"  
 COLTON, CALIFORNIA

**MONUMENT TIES**  
 FOR P.M. 12957

SHEET NO. 2 OF 4  
 DATE December 1981  
 SCALE 1" = 60'



○ Indicates 3/4" I.P. with plastic plug stamped LS.3018, flush, unless otherwise noted.  
 ● Indicates nail in top of curb, unless otherwise noted.

- ✕ FD. Ramset Nail on T/C
- FD. LD. & TK. on T/C
- FD. "C" Nail on T/C
- Set LD. & TK. on T/C

Scale:  
 Date:  
 Drawn by:  
 W.O.:  
 F.B.:

**OFFICIAL TIE PLAT**  
 CITY OF RIVERSIDE

*These ties are for the purpose of perpetuating the found monumentation. No claim is made as to the relationship of the points or lines shown hereon to true boundary locations.*

Sheet 1 of 1  
 File No.:

CURB: STERLING AVE.  
 7408.TIF  
 OFFICIAL USE ONLY  
 X-Street: DR. MERCEDEZ DR. & PIERCE ST.