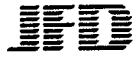


741.71F



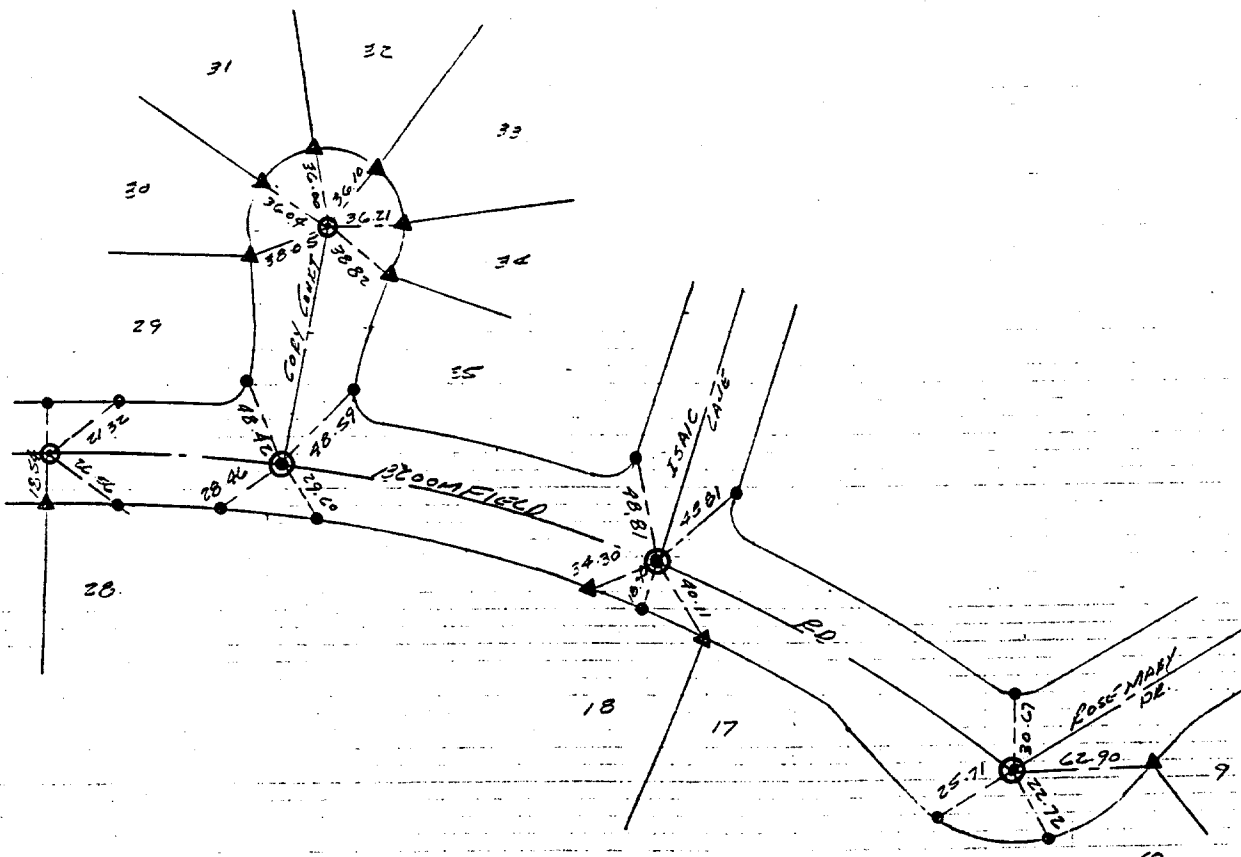
J.F. Davidson Associates, Inc.
ENGINEERING PLANNING SURVEYING
ARCHITECTURE LANDSCAPE ARCHITECTURE

F.B. 11410/70

SURVEY OF CENTER MONUMENTS SHEET 5 OF 5 SHEETS
FOR STEPLING TR 22275-C W.O. No. 11410 Date 3-5-90
SURVEY PARTY ELLIS SAGGADO MARTINEZ REF. _____ A.M. _____

SET NAIL & TAG LS 3018 ON PROLONGATION OF SIDE LINES = ▲
SET RAMSET NAIL ON TOP EXIST CURB = ●
1" I.P., L.S. 3018, FLUSH = ○

CITY



- ✕ FD. Ramset Nail on T/C
- FD. LD. & TK. on T/C
- FD. "C" Nail on T/C
- Set LD. & TK. on T/C

Scale: _____
 Date: _____
 Drawn by: _____
 W.O.: _____
 F.B.: _____

OFFICIAL TIE PLAT

CITY OF RIVERSIDE

These ties are for the purpose of perpetuating the found monumentation. No claim is made as to the relationship of the points or lines shown hereon to true boundary locations.

Sheet **5** of **5**
File No.: _____

Street: BLOOMFIELD RD
741.71F
 X-Street: ROSEMARY DR
 OFFICIAL USE ONLY