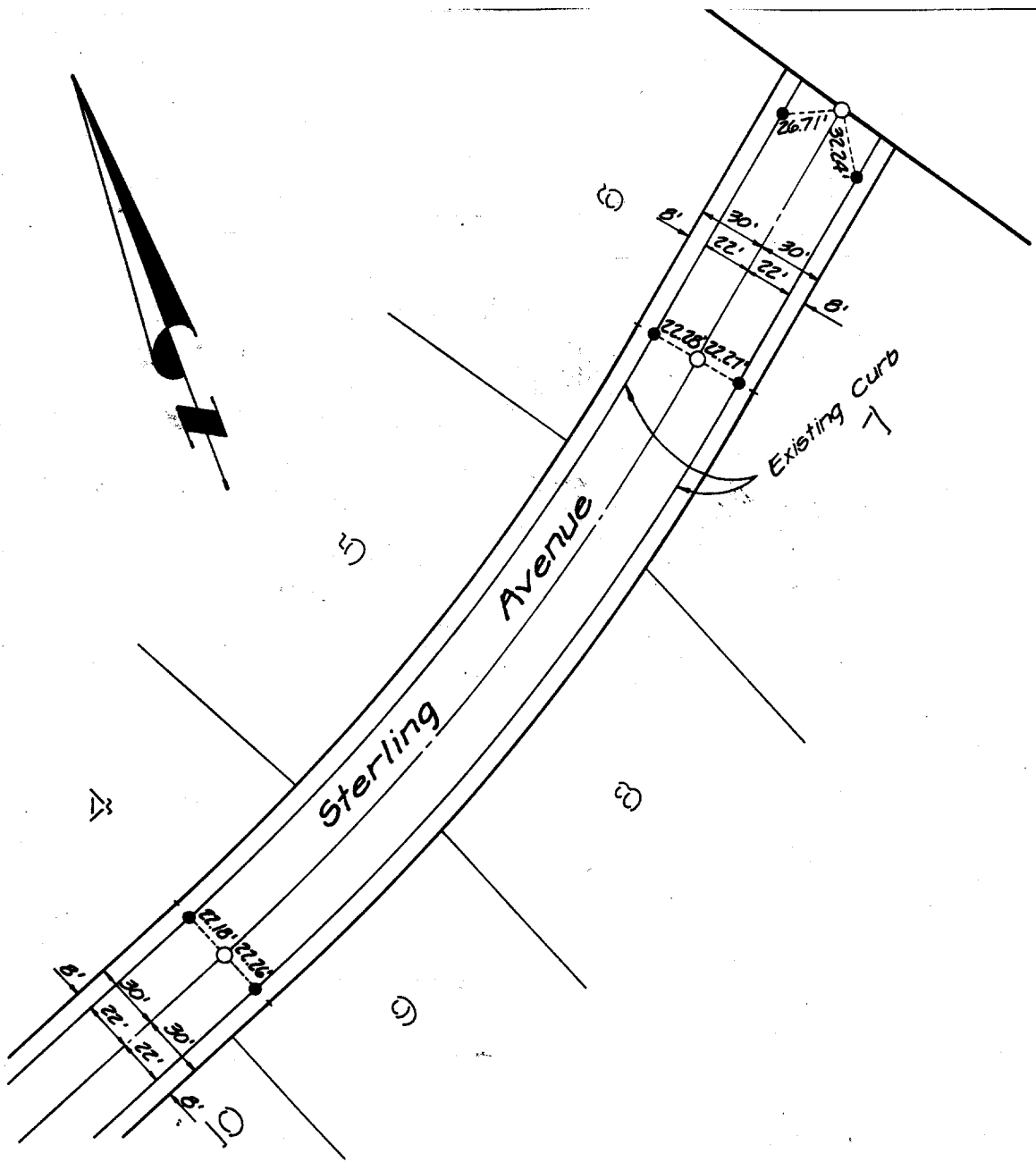


Street: **STERLING AVE** X-Street: **BIT END OF CUL-DE-SAC**  
7410.TIF OFFICIAL USE ONLY MERCED DR.



○ Indicates 3/4" I.P. with plastic plug stamped L.S.3018, flush, unless otherwise noted.  
 ● Indicates nail in top of curb, unless otherwise noted.

J.F. DAVIDSON ASSOCIATES  
 11200 S. MT. VERNON AVE.  
 SUITE "D"  
 COLTON, CALIFORNIA

**MONUMENT TIES**  
 FOR P.M. 12957

SHEET NO. 4 of 4  
 DATE December 1981  
 SCALE 1"=60'

- × FD. Ramset Nail on T/C
- FD. LD. & TK. on T/C
- FD. "C" Nail on T/C
- Set LD. & TK. on T/C

Scale:  
 Date:  
 Drawn by:  
 W.O.:  
 F.B.:

**OFFICIAL TIE PLAT**  
**CITY OF RIVERSIDE**

*These ties are for the purpose of perpetuating the found monumentation. No claim is made as to the relationship of the points or lines shown hereon to true boundary locations.*

Sheet 1 of 1  
 File No.: