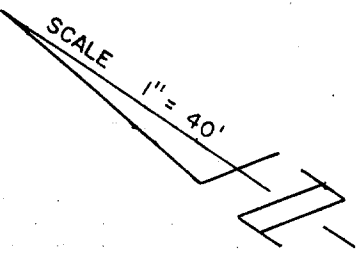


TRACT NO. 19787

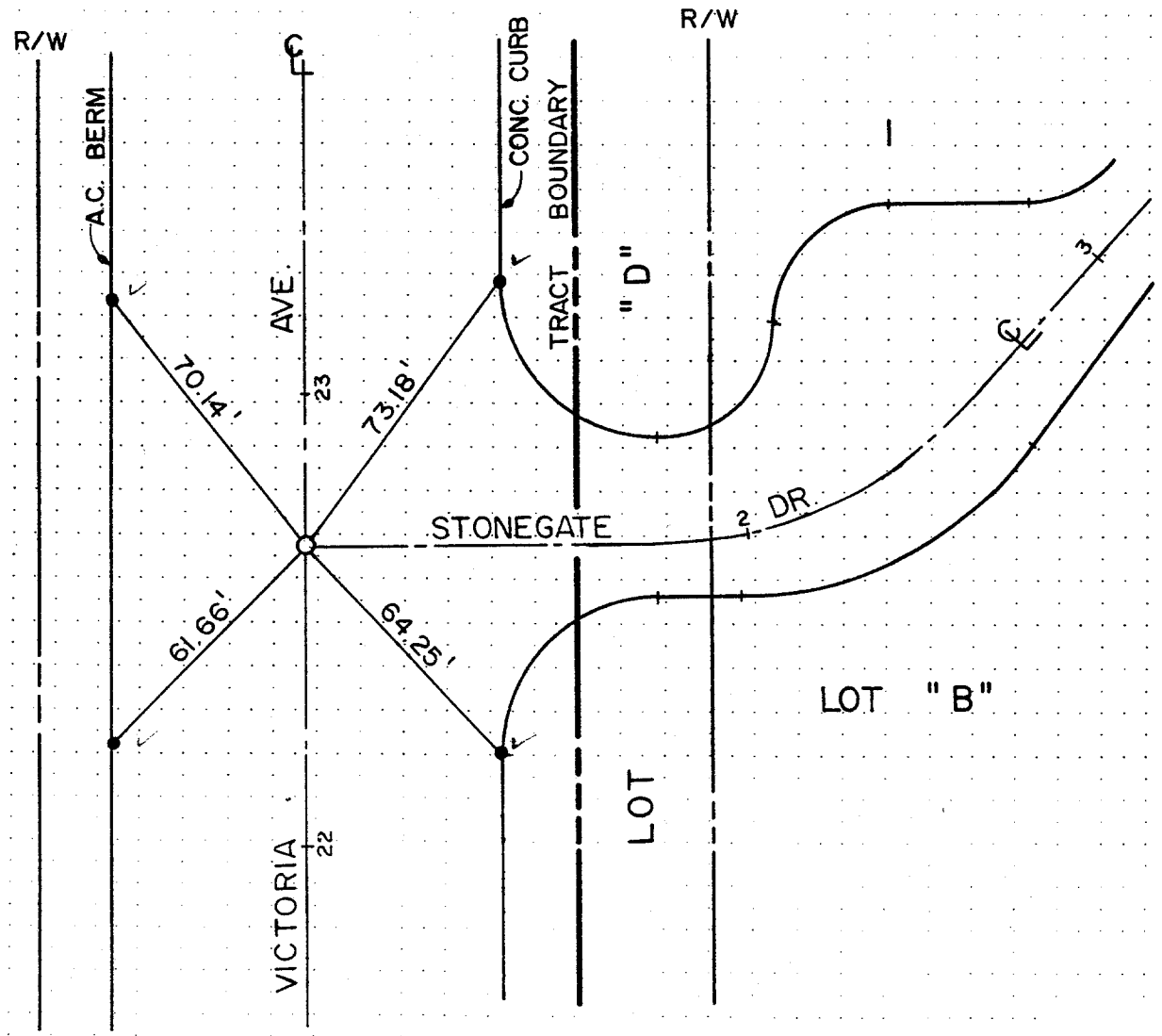
STREET STONEGATE DRIVE
7420.TIF
 OFFICE USE ONLY
 X-STREET VICTORIA AVENUE



NOTE: ALL TIE POINTS ARE "L" & "T"
 SET IN TOP OF CURB
 UNLESS OTHERWISE NOTED

LEGEND

- = 1" I.P. W/ L.S. 5023
- = LEAD & TACK



SCALE: 1" = 40'
 DATE: 01-26-95
 DR. BY:
 W.O.: I03-100-51
 F.B.:

OFFICIAL TIE PLAT
 CITY OF RIVERSIDE
 PREPARED BY: **DAVID A. BOYLE ENGINEERING**
 SANTA ANA CALIFORNIA

SHEET
 2
 OF 2 SHEETS
 FILE NO.: