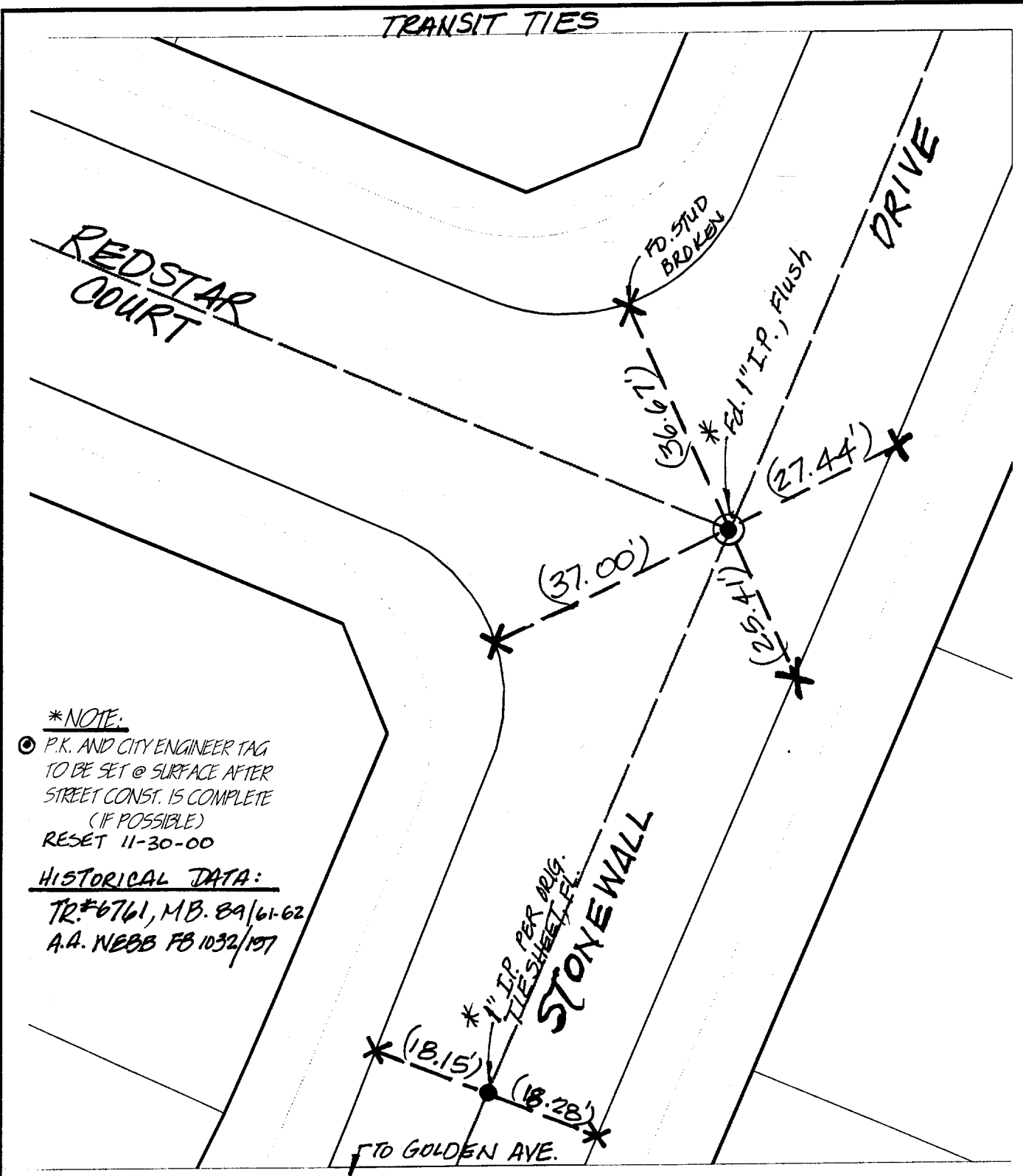


Street: **742771#** **STONEMALL DRIVE** **X-Street:** **REDSTAR COURT**
OFFICIAL USE ONLY



***NOTE:**
 ● P.K. AND CITY ENGINEER TAG TO BE SET @ SURFACE AFTER STREET CONST. IS COMPLETE (IF POSSIBLE)
 RESET 11-30-00

HISTORICAL DATA:
 TR.#6761, MB. 89/61-62
 A.A. NEBB FB 1032/197

- ✕ FD. Ramset Nail on T/C
- FD. LD. & TK. on T/C
- FD. "C" Nail on T/C
- Set LD. & TK. on T/C

Scale: 1" = 20'
 Date: 12/22/99
 Drawn by: K.G.E.
 W.O.:
 F.B.:

OFFICIAL TIE PLAT

CITY OF RIVERSIDE



These ties are for the purpose of perpetuating the found monumentation. No claim is made as to the relationship of the points or lines shown hereon to true boundary locations.

Sheet 1 of 1
 File No.: