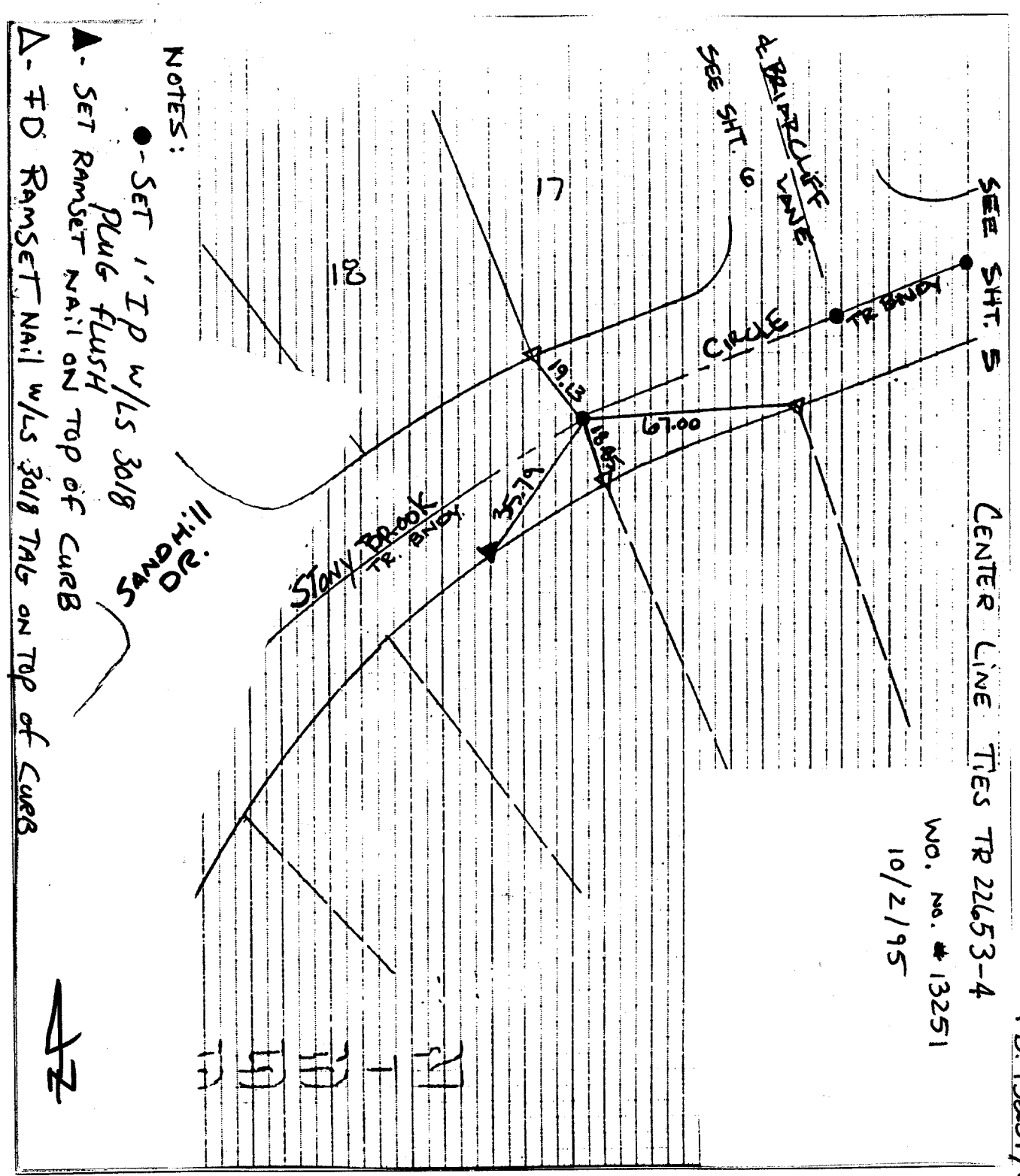


Street: Stony Brook Circle X-Street: B/T Briarcliff Lane
7431 TIE OFFICIAL USE ONLY AND SANDHILL DR.
 F.B. 13251/335



SEE SHT. 5 CENTER LINE TIES TR 22653-4
 W.O. No. # 13251
 10/2/95

NOTES:

- - SET 1" IP W/LS 3018 PLUG FLUSH SANDHILL DR.
- ▲ - SET RAMSET NAIL ON TOP OF CURB
- △ - TD RAMSET NAIL W/LS 3018 TAB ON TOP OF CURB

- × FD. Ramset Nail on T/C
- FD. LD. & TK. on T/C
- FD. "C" Nail on T/C
- Set LD. & TK. on T/C

OFFICIAL TIE PLAT
CITY OF RIVERSIDE

These ties are for the purpose of perpetuating the found monumentation. No claim is made as to the relationship of the points or lines shown hereon to true boundary locations.

Scale:
 Date:
 Drawn by:
 W.O.:
 F.B.:

Sheet 1 of 1
 File No.: