

J.P. Davidson Associates, Inc.
ENGINEERING PLANNING SURVEYING
ARCHITECTURE LANDSCAPE ARCHITECTURE

F.B. 13251-340A

SURVEY OF CENTERLINE TIES - REVISED

SHT. 6 OF 8

SHT. 5

FOR TRACT 22153-4

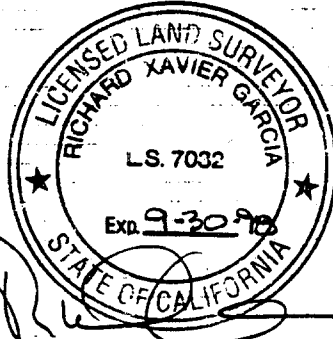
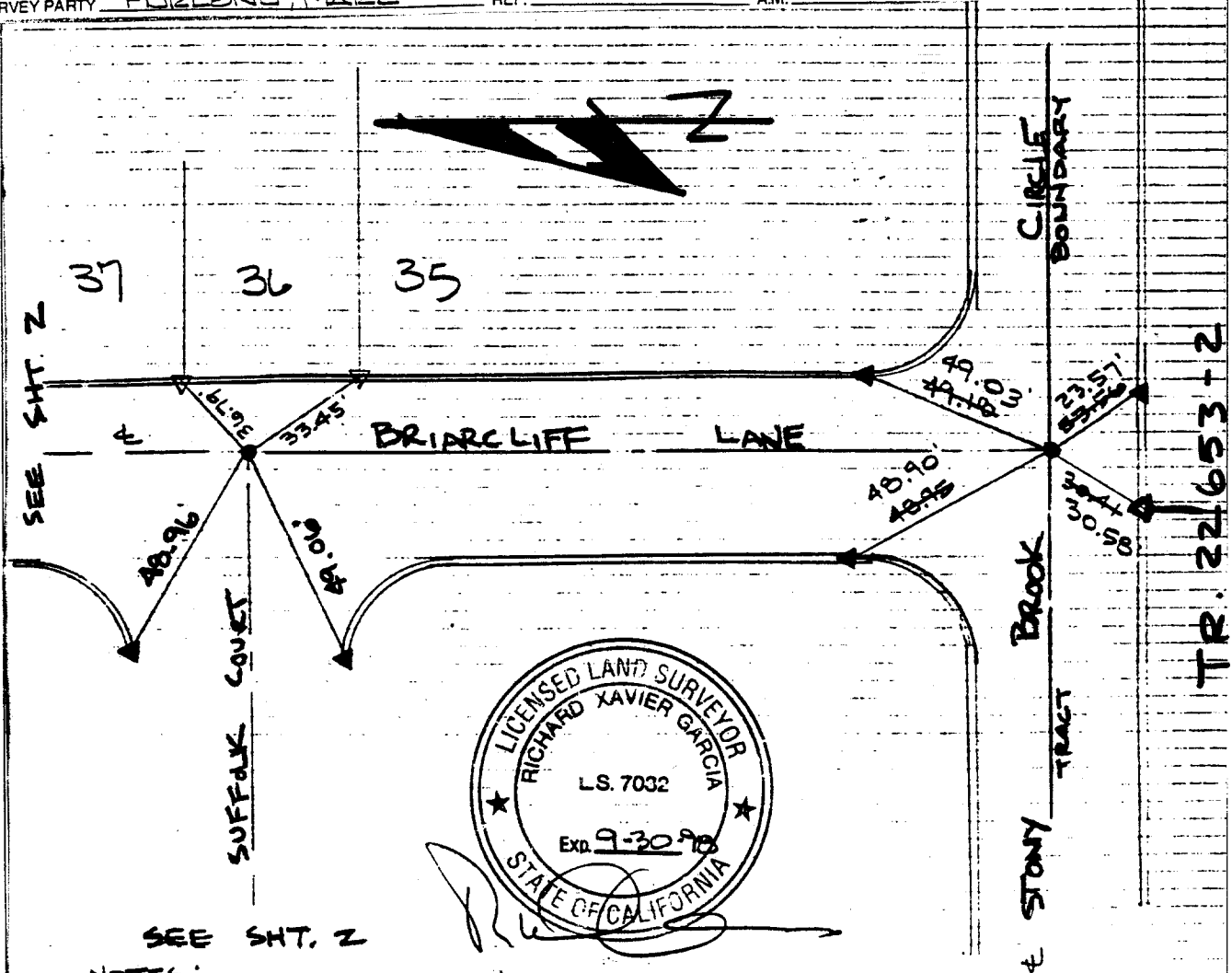
W.O. No. 13251

Date 10-13-98

SURVEY PARTY FURLONG, MAZZ

REF.

AM.



SEE SHT. 2
NOTES:

- - SET 1" I.P. W/LS. 3018 PLUG FLUSH
- △ - FD. RAMSET NAIL W/LS 3018 ON TOP OF CURB
- ▲ - SET RAMSET NAIL ON TOP OF CURB

SEE SHT. 1

3880 LEMON STREET

POST OFFICE BOX 493

RIVERSIDE, CALIFORNIA 92502

RIVERSIDE 686-0844

- × FD. Ramset Nail on T/C
- FD. "C" Nail on T/C

- FD. LD. & TK. on T/C
- Set LD. & TK. on T/C

Scale:

Date:

Drawn by:

W.O.:

F.B.:

OFFICIAL TIE PLAT CITY OF RIVERSIDE

These ties are for the purpose of perpetuating the found monumentation. No claim is made as to the relationship of the points or lines shown hereon to true boundary locations.

Sheet 1 of 1

File No.:

Street: BRIARCLIFF LN. X-Street: B/T STONY BROOK CIR
7432 TIE OFFICIAL USE ONLY AND SUFFOLK