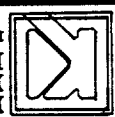


STREET Stoneykirk
7444-71E
 OFFICE USE ONLY
 X-STREET Applecross

SCALE: 1" = 40'
 DATE: 10-20-95
 DR. BY: T.F.W.
 M.O.: 30650
 F.B.: 30650

OFFICIAL TIE PLAT
 CITY OF RIVERSIDE

PREPARED BY: KETHE INTERNATIONAL, INC.
 22690 CACTUS AVE., #300
 MORENO VALLEY, CA 92557
 (909) 653-0234
 IM AND EMPIRE DIVISION

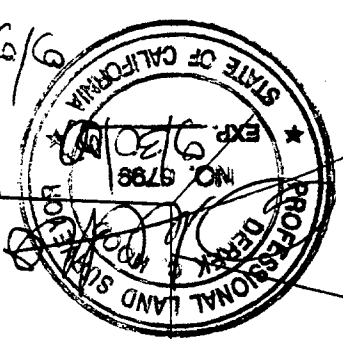
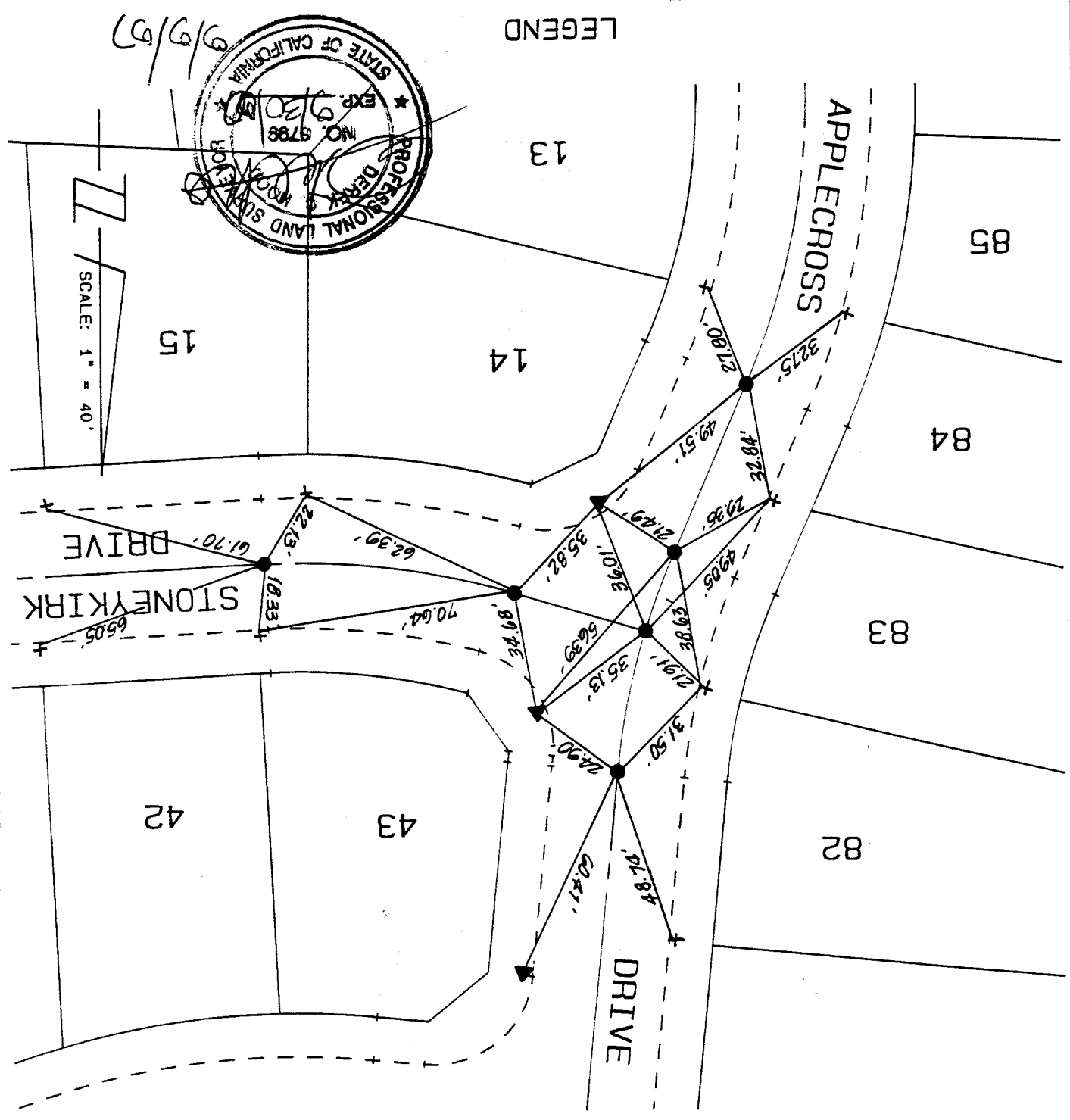


SHEET 14
 OF 28 SHEETS
 FILE NO.: 30728

TIES FOR TRACT NO. 22408-1, M.B. 227/17-29

LEGEND

- - 6" SPIKE AND WASHER STAMPED LS 6799, FLUSH.
- + - NAIL AND TAG, RCE 30534 ON TOP OF CURB
- ▼ - LEAD AND TACK ON TOP OF CURB



SCALE: 1" = 40'

9/9/97