

F.B.: 30650
M.O.: 30650
DR. BY: T.F.M.
DATE: 10-20-95
SCALE: 1" = 40'

OFFICIAL TIE PLAT

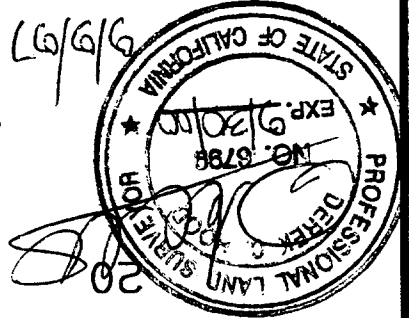
CITY OF RIVERSIDE

PREPARED BY: **KEITH INTERNATIONAL, INC.**
22690 CACTUS AVE., #300
MORENO VALLEY, CA 92557
(909) 653-0234
LAND EMPIRE DIVISION



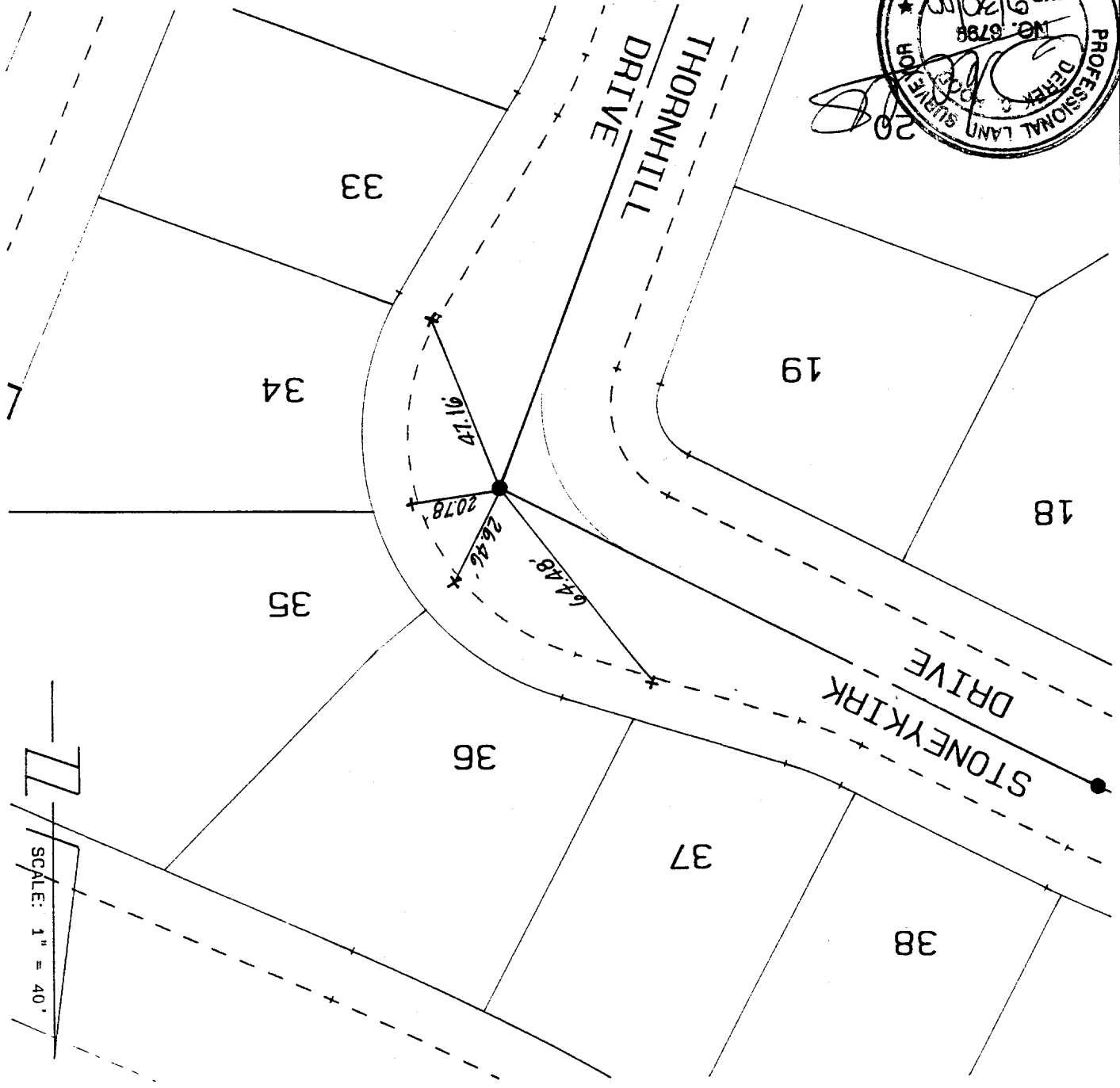
SHEET 16 OF 28 SHEETS
FILE NO.: 30728

STREET STONEYKIRK
746-71E
X-STREET THORNHILL
OFFICE USE ONLY



LEGEND

- - 6" SPIKE AND WASHER STAMPED LS 6799, FLUSH.
- + - NAIL AND TAG, RCE 30534 ON TOP OF CURB
- ▼ - LEAD AND TACK ON TOP OF CURB



TIES FOR TRACT NO. 22408-1, M.B. 227/17-29

SCALE: 1" = 40'