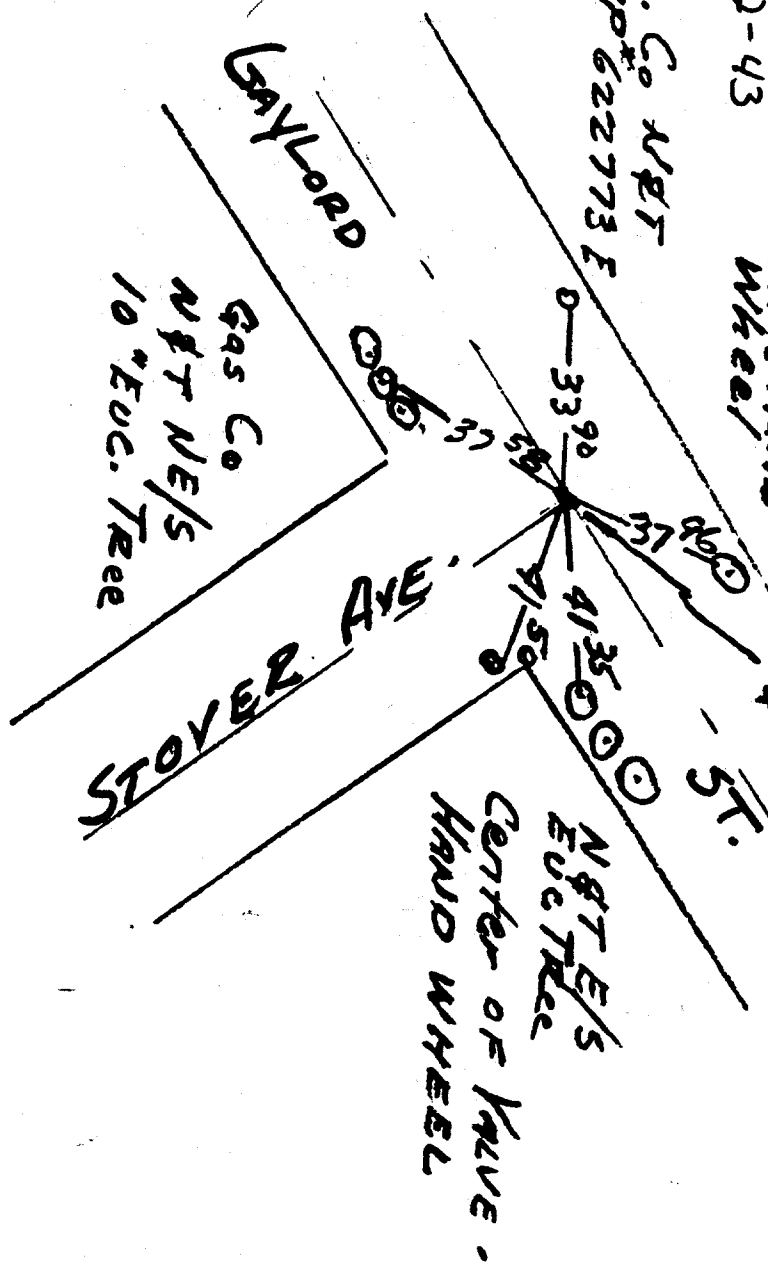


Street: **STOVER AVE.** X-Street: **GAYLORD ST.**
 2456.71F OFFICIAL USE ONLY

See FB FOR
 ALIGNMENT
 FB 608/42-43

Center of 4" Valve Hand Wheel
 4 1/2" 11' 1" Fd down
 4 1/2" 11' 1" Fd down

Gas. Co NPT
 w/s PP# 622773 F



Gas Co
 NPT N/S
 10" Euc. Tree

NPT E/S
 Euc. Tree
 Center of Valve
 Hand Wheel

SEE NEW
 TIE SHEET

AVE.

4 1/2" 11' 1" Fd down
 AVE.

- ✕ FD. Ramset Nail on T/C
- FD. LD. & TK. on T/C
- FD. "C" Nail on T/C
- Set LD. & TK. on T/C

OFFICIAL TIE PLAT
CITY OF RIVERSIDE

These ties are for the purpose of perpetuating the found monumentation. No claim is made as to the relationship of the points or lines shown hereon to true boundary locations.

Scale:
 Date:
 Drawn by:
 W.O.:
 F.B.:

Sheet 1 of 1
 File No.: