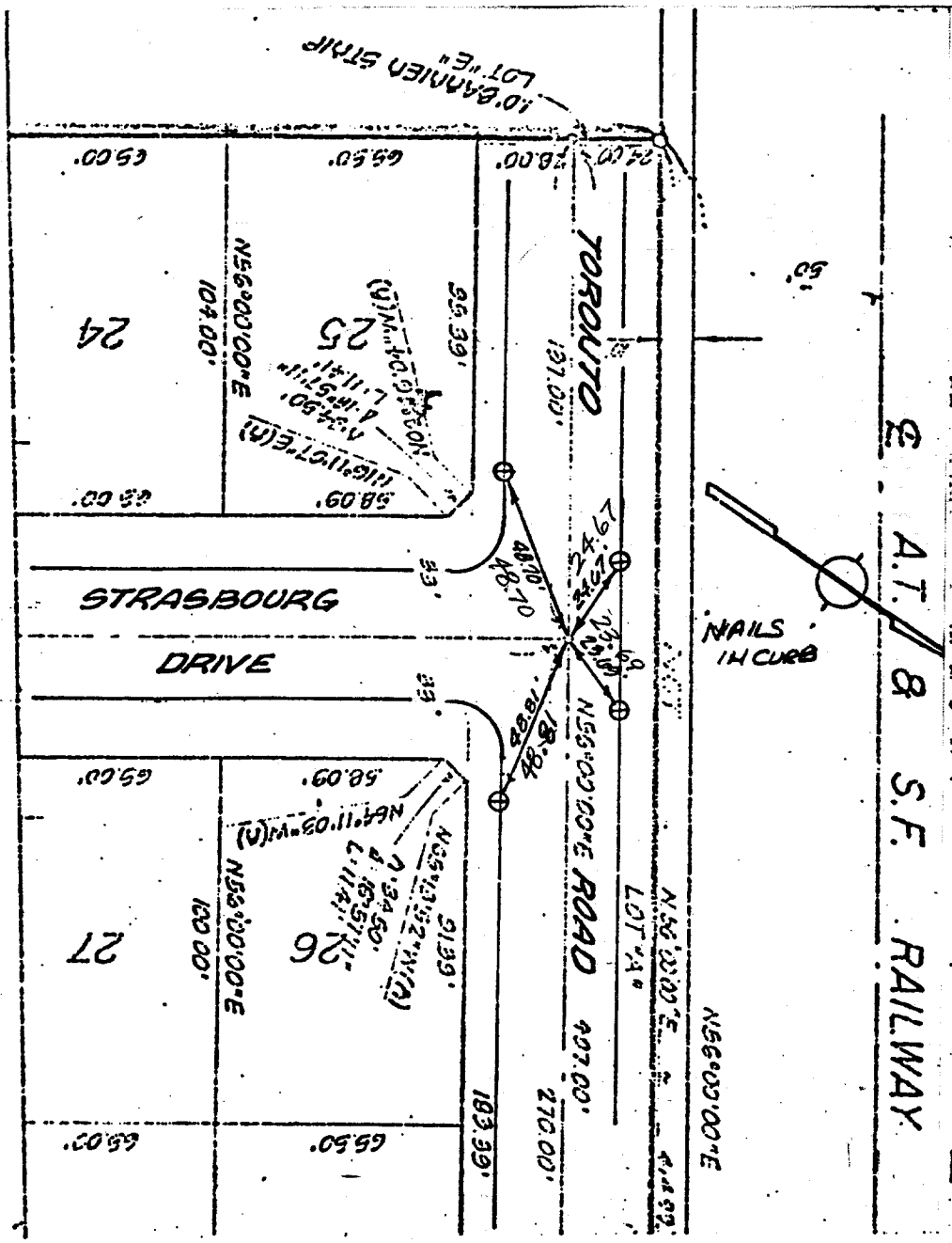


Street: **STRASBOURG DR.** X-Street: **TORONTO RD.**  
**7461 TIE** OFFICIAL USE ONLY

ON ASSOCIATES  
 FIFTH STREET  
 E., CALIFORNIA

**MONUMENT TIES**  
 FOR TRACT **7875-1**

SHEET NO. **5** OF **6**  
 DATE **SEPT. 1977**  
 SCALE **1" = 50'**



- ⊙ Indicates Riverside County Standard No. 903 Type "B" Monument (1/2" Brass Cap Stamped R.C.E. 862).
- ⊗ Indicates Riverside County Standard No. 902 Type "A" Monument (1/4" Iron Pipe Tagged R.C.E. 862).
- ⊙⊗ Indicates Set Nail & Tagged R.C.E. 862 in Curb.
- Indicates Set Nail in Curb.

- ⊗ FD. Ramset Nail on T/C
- FD. "C" Nail on T/C
- FD. LD. & TK. on T/C
- Set LD. & TK. on T/C

Scale:  
 Date:  
 Drawn by:  
 W.O.:  
 F.B.:

**OFFICIAL TIE PLAT**  
**CITY OF RIVERSIDE**

*These ties are for the purpose of perpetuating the found monumentation. No claim is made as to the relationship of the points or lines shown hereon to true boundary locations.*

Sheet 1 of 1  
 File No.: