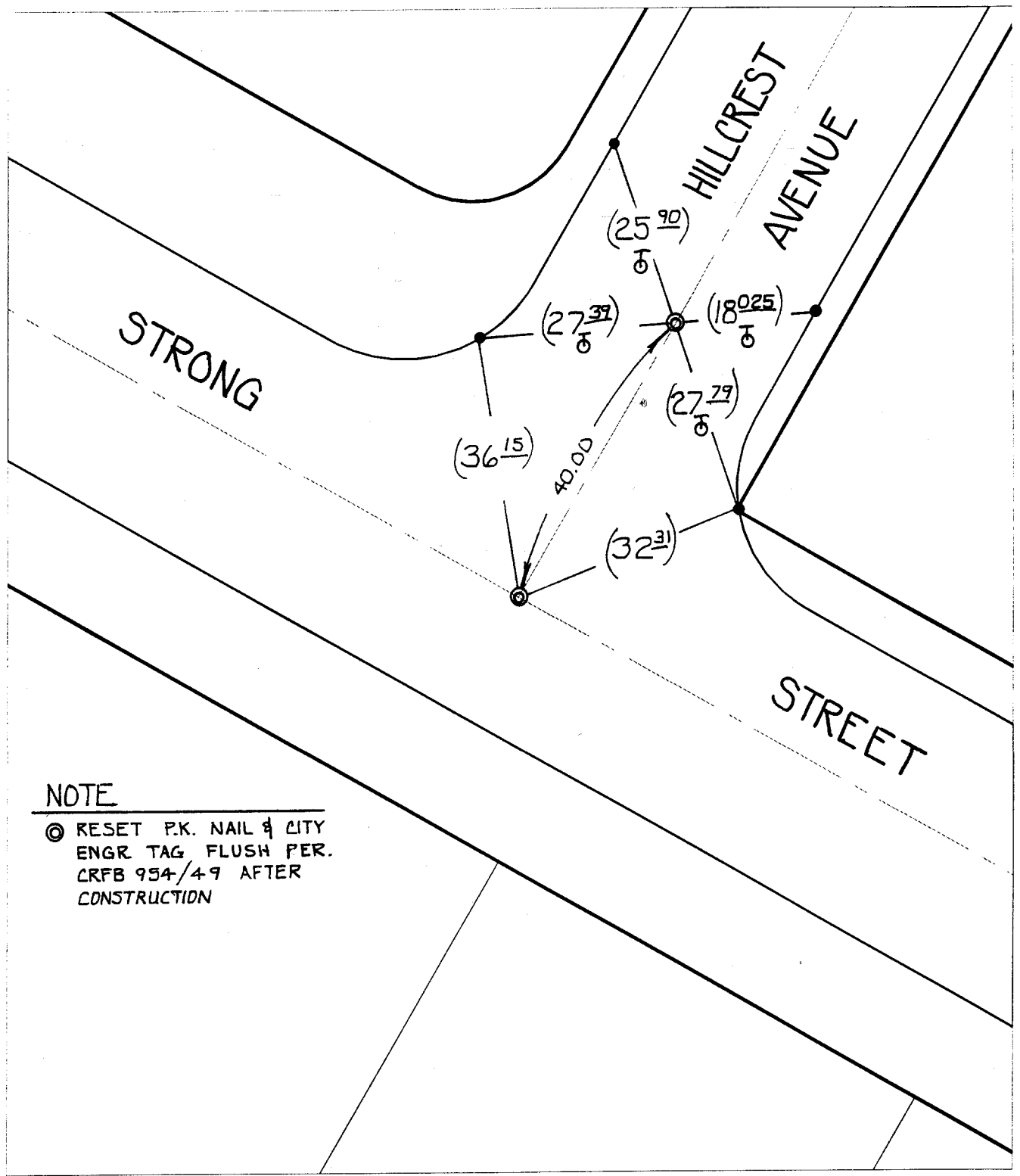


TRANSIT & SWING TIES

Street: **STRONG STREET** **7471.71P** **X-Street: HILLCREST AVENUE**
OFFICIAL USE ONLY



NOTE

⊙ RESET P.K. NAIL & CITY ENGR TAG FLUSH PER. CRFB 954/49 AFTER CONSTRUCTION

- × FD. Ramset Nail on T/C
- FD. LD. & TK. on T/C
- FD. "C" Nail on T/C
- Set LD. & TK. on T/C

Scale: 1" = 20'
 Date: 11/29/99
 Drawn by: SURVEY
 W.O.:
 F.B.:

OFFICIAL TIE PLAT CITY OF RIVERSIDE



These ties are for the purpose of perpetuating the found monumentation. No claim is made as to the relationship of the points or lines shown hereon to true boundary locations.

Sheet 1 of 1
 File No.: