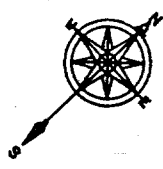


7475.TIF



STREET

~~STRONG ST~~  
TIF

OFFICE USE ONLY

X-STREET

~~SUNUP CIRCLE~~

TR. NO. 21919  
LOT J

SET LEAD & C-NAIL W/ 1" BRASS WASHER  
ON 1/2 DELTA T.C., CENTER OF HANDICAP  
RAMP.

STRONG STREET

SUNUP CIRCLE

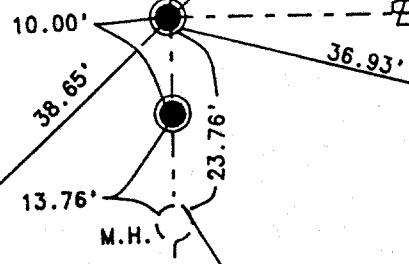
SET C-NAIL & 1" BRASS WASHER  
IN WEST FACE CONC. FOUND.  
SLUMP STONE ROD IRON WALL

SET CHISEL "+" WEST SIDE M.H. RIM

**MONUMENT NOTES:**

● FD. 3/4" I.P. TAGGED R.C.E. 19640  
DN. 0.4' PER TR. NO. 21919, M.B.  
190/23-24 UNLESS OTHER WISE NOTED.

SET NAIL & TIN ON NORTH FACE  
OF UTILITY POLE #1127J, 1.2'  
ABOVE GROUND.



SCALE: 1" = 20'
DATE: 4-10-95
OR. BY:
W.O.:
F.B.:

<b>OFFICIAL TIE PLAT</b> CITY OF RIVERSIDE	

SHEET
1
OF 2 SHEETS
F.B.: