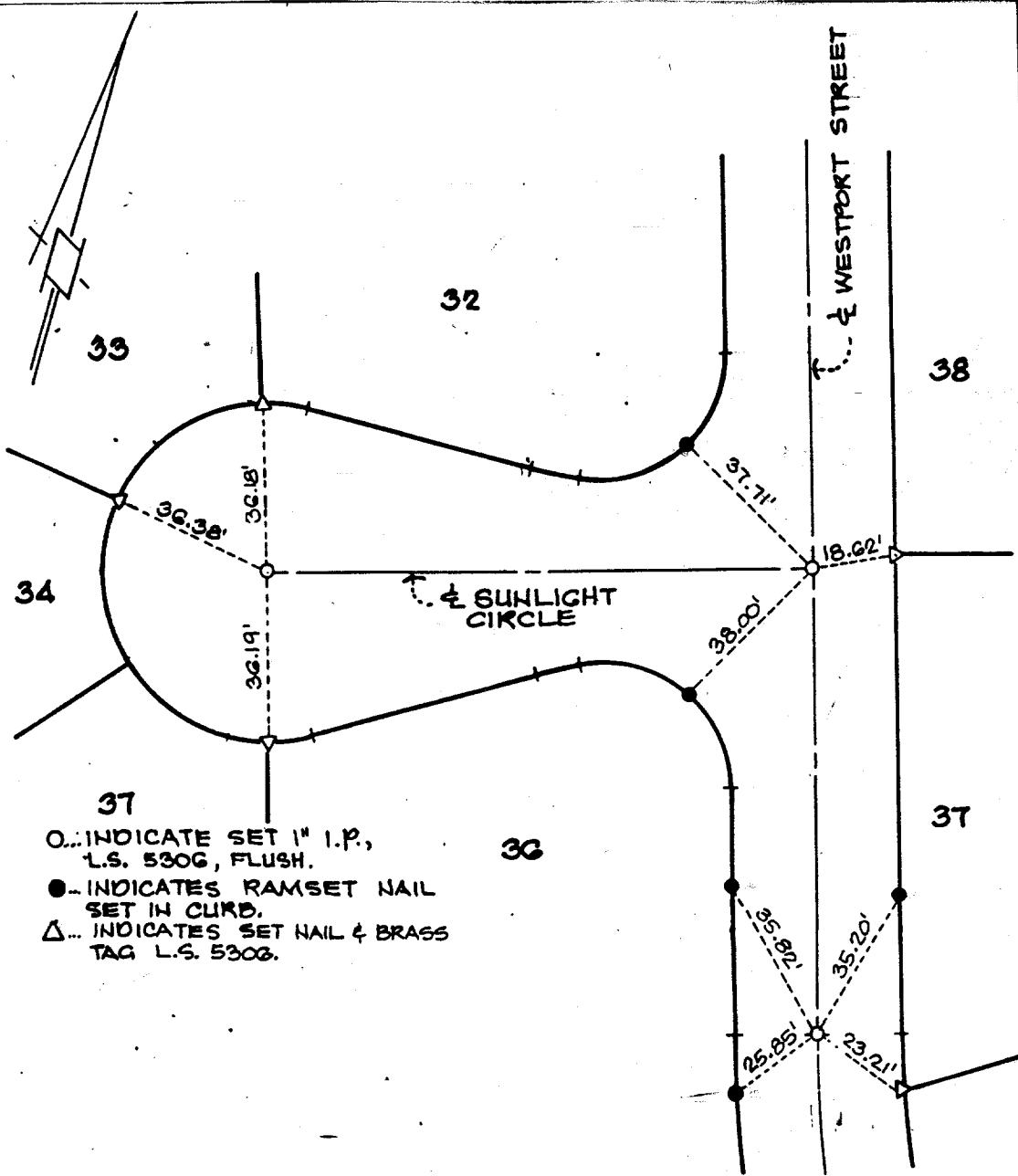


SUNLIGHT CIRCLE



- INDICATE SET 1" I.P., L.S. 530G, FLUSH.
- INDICATES RAMSET NAIL SET IN CURB.
- △ INDICATES SET NAIL & BRASS TAG L.S. 530G.

TRACT NO. 21685
CENTERLINE TIES

CITY OF RIVERSIDE, CALIFORNIA



Southland Engineering

2200 Business Way, Ste. 100
Riverside, Ca. 92501
(714) 788-8488

SHEET

32

OF 38

DATE: JUNE 1991

- × FD. Ramset Nail on T/C
- FD. "C" Nail on T/C

- FD. LD. & TK. on T/C
- Set LD. & TK. on T/C

Scale:

Date:

Drawn by:

W.O.:

F.B.:

OFFICIAL TIE PLAT
CITY OF RIVERSIDE

These ties are for the purpose of perpetuating the found monumentation. No claim is made as to the relationship of the points or lines shown hereon to true boundary locations.

Sheet 1 of 1

File No.:

Street: SUNLIGHT CIRCLE
7800.71E

OFFICIAL USE ONLY

X-Street: WESTPORT ST.