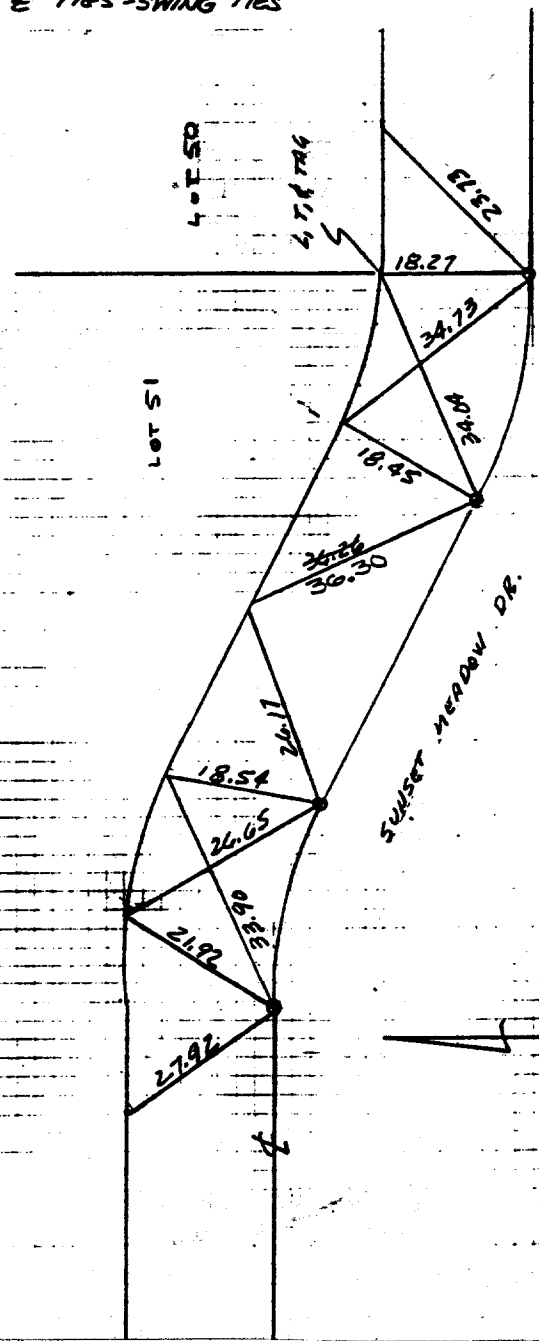


Street: SUNSET MEADOW DR. X-Street: N 1/2 OF SUNNYVALLE DR.  
7519. TIF OFFICIAL USE ONLY

TR 22238  
 MORRISON 7-1-88  
 TIES - SWING TIES

NO. 4  
 210-0003

SUNSET MEADOW DRIVE  
 BET. SUNNYVALLE DR.  
 AND SANDY LANE



SET LET 1/4 T/C UNLESS OTHERWISE NOTED.

○ Denotes Set 1" I.P. Flush Jagged RCE 31574

- ✕ FD. Ramset Nail on T/C
- FD. LD. & TK. on T/C
- FD. "C" Nail on T/C
- Set LD. & TK. on T/C

Scale:  
 Date:  
 Drawn by:  
 W.O.:  
 F.B.:

## OFFICIAL TIE PLAT

### CITY OF RIVERSIDE

*These ties are for the purpose of perpetuating the found monumentation. No claim is made as to the relationship of the points or lines shown hereon to true boundary locations.*

Sheet 1 of 1  
 File No.: