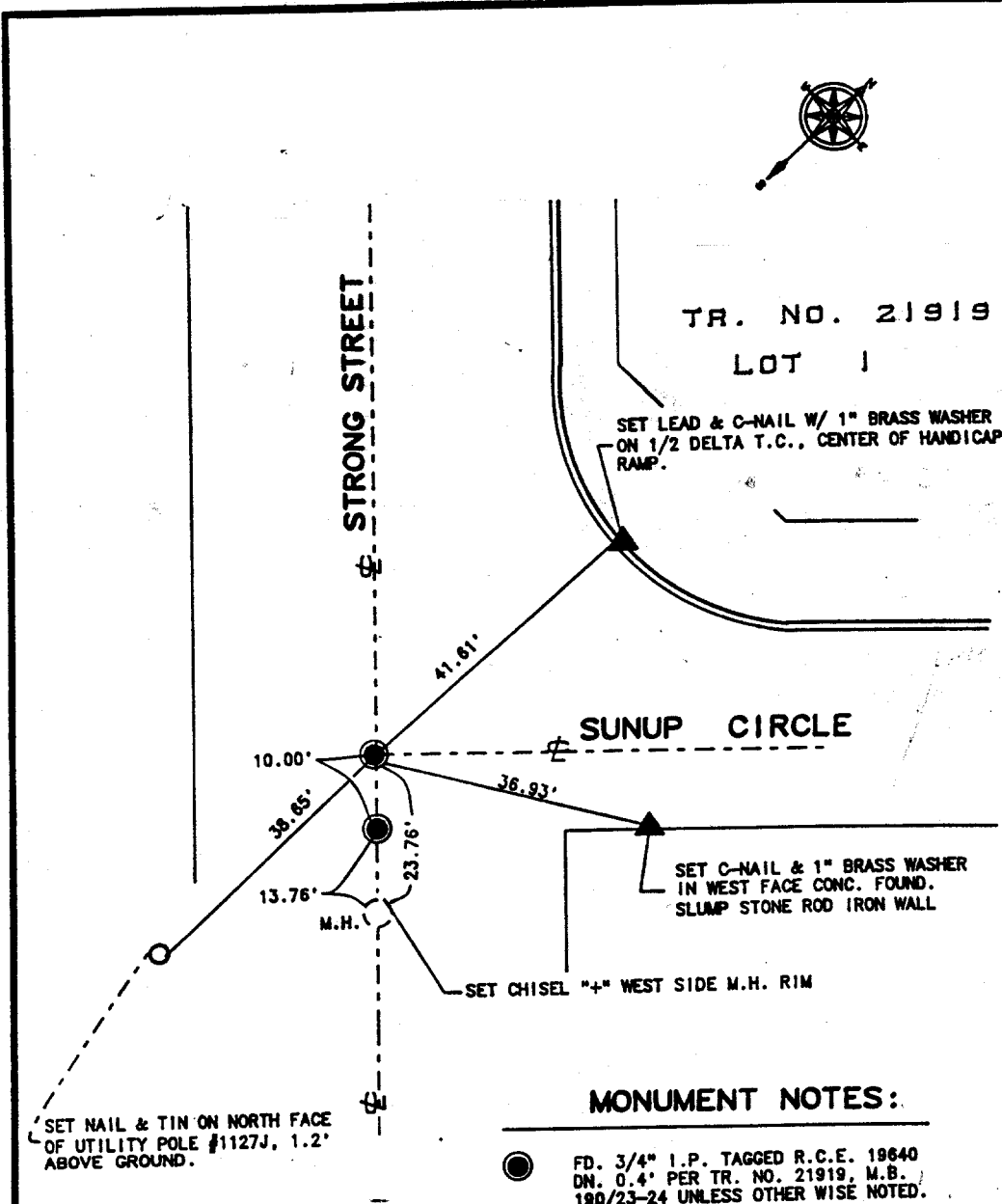


Street: SUNUP CIR
7525.71P

X-Street: STRONG ST.
 OFFICIAL USE ONLY



MONUMENT NOTES:

- FD. 3/4" I.P. TAGGED R.C.E. 19640 DN. 0.4' PER TR. NO. 21919, M.B. 190/23-24 UNLESS OTHERWISE NOTED.

SCALE: 1" = 20'
 DATE: 4-10-95
 OR. BY:
 W.O.:
 F.B.:

OFFICIAL TIE PLAT
 CITY OF RIVERSIDE
 PREPARED BY: THOMAS W. CHADWELL
 R.C.E. 33755

SHEET
 1
 OF 2 SHEETS
 F.B.:

- ⊗ FD. Ramset Nail on T/C
- FD. LD. & TK. on T/C
- FD. "C" Nail on T/C
- Set LD. & TK. on T/C

Scale:
 Date:
 Drawn by:
 W.O.:
 F.B.:

OFFICIAL TIE PLAT
 CITY OF RIVERSIDE
These ties are for the purpose of perpetuating the found monumentation. No claim is made as to the relationship of the points or lines shown hereon to true boundary locations.

Sheet 1 of 1
 File No.: