

Street: **SUWANNEE ST.**

7521 TIE

OFFICIAL USE ONLY

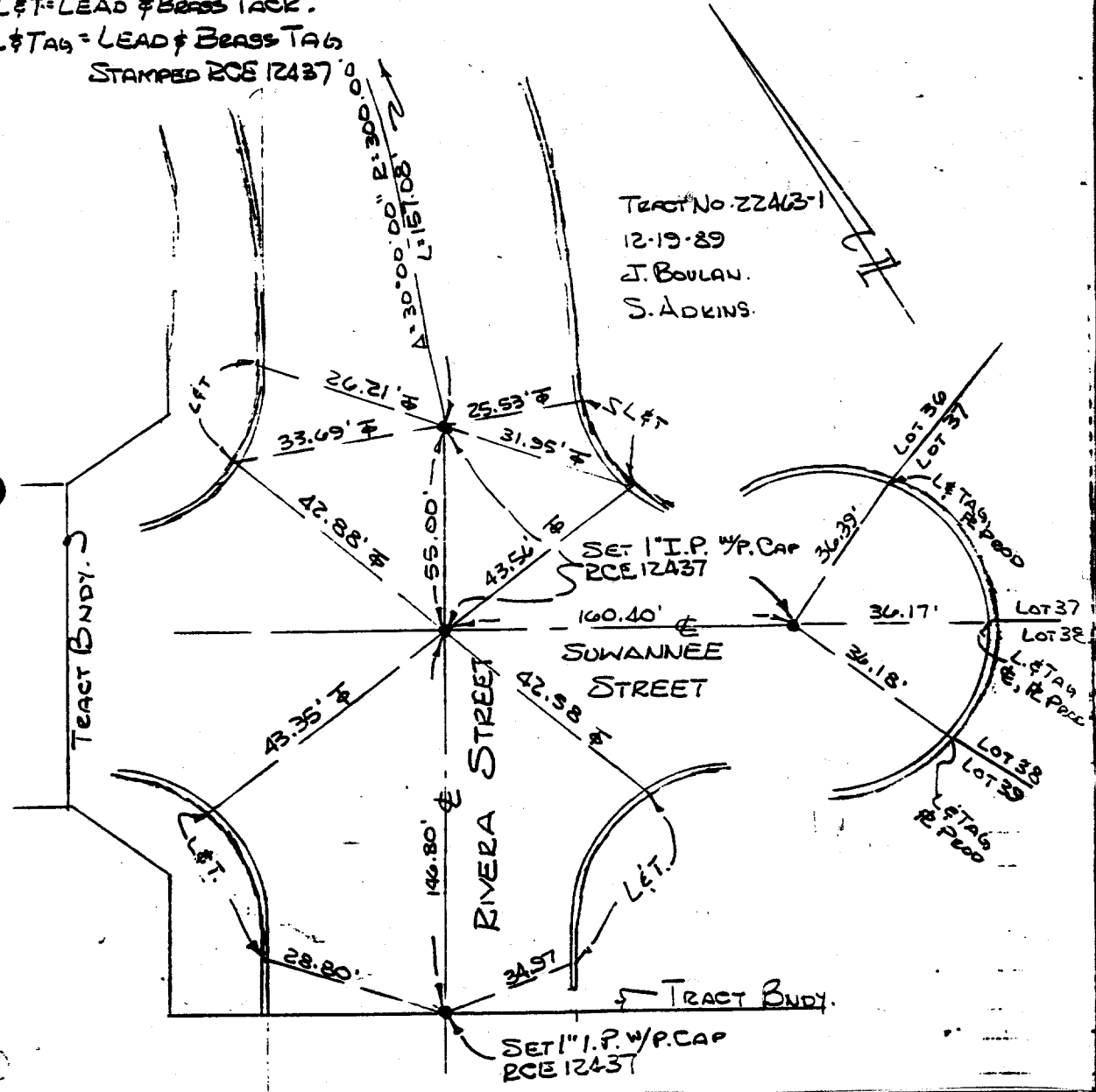
X-Street: **RIVERA ST.**

JDR CORPORATION
1921 E. Sampson Avenue
Corona, CA 91719
(714) 272-6580 Fax (714) 272-5745

SUWANNEE ST. AT RIVERA ST.

L & T = LEAD & BRASS TACK.
F & TAG = LEAD & BRASS TAG
STAMPED RCE 12437

TRACT No. 22463-1
12-19-89
J. BOULAN.
S. ADKINS.



- ✕ FD. Ramset Nail on T/C
- FD. LD. & TK. on T/C
- FD. "C" Nail on T/C
- Set LD. & TK. on T/C

Scale:
Date:
Drawn by:
W.O.:
F.B.:

OFFICIAL TIE PLAT

CITY OF RIVERSIDE

These ties are for the purpose of perpetuating the found monumentation. No claim is made as to the relationship of the points or lines shown hereon to true boundary locations.

Sheet 1 of 1
File No.: