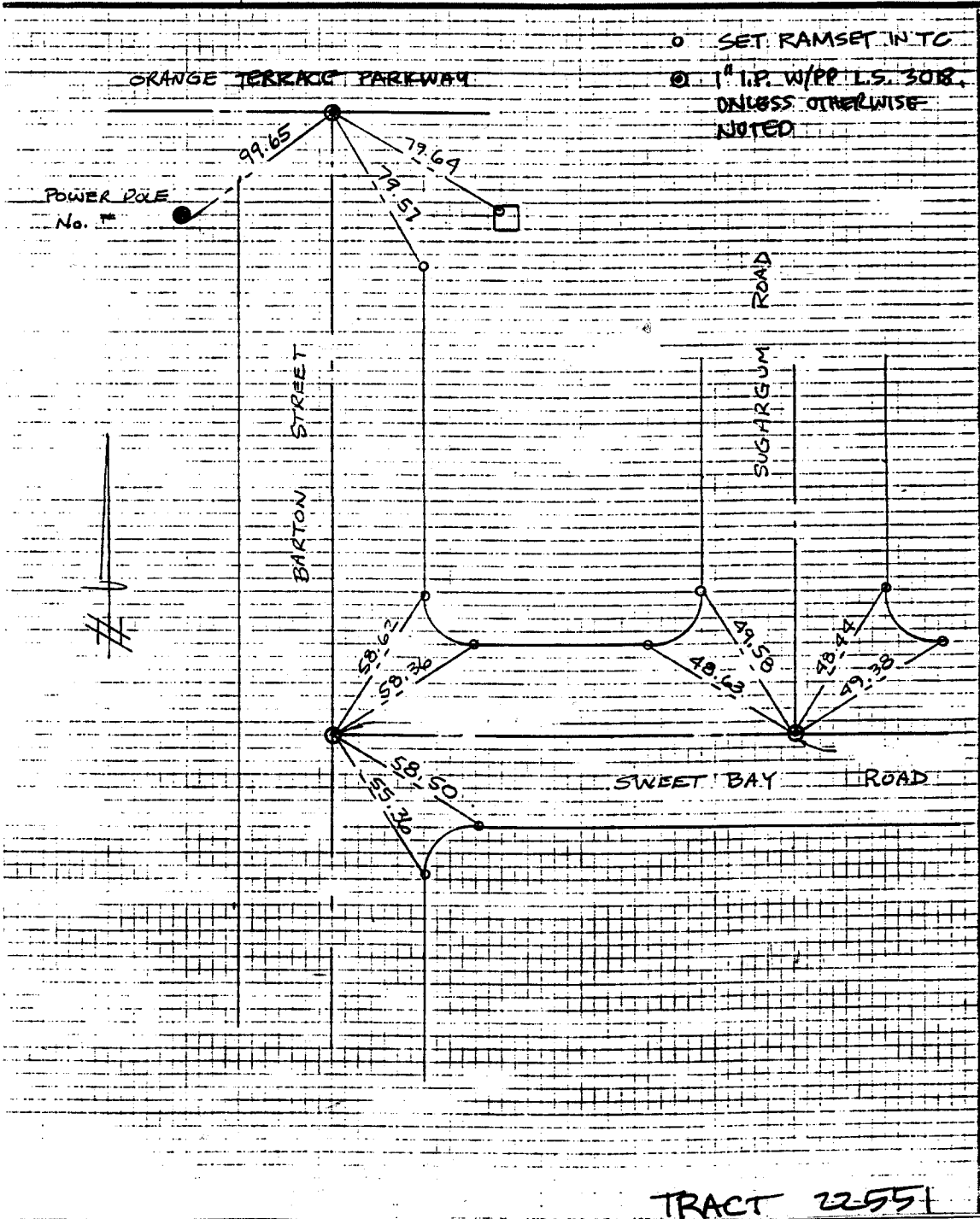


SURVEY NOTES SUGARGUM RD. & SWEET B

SURVEY OF TRACT No 21834-1 & TIES SHEET 5 OF 5 SHEETS  
 FOR PACESETTER W.O. No. 11035 Date 11-14-89  
 SURVEY PARTY MCKEE, HOPKINS, SMITH REF. AM.



○ SET RAMSET NTC  
 ○ 1" I.P. W/PP L.S. 3018.  
 UNLESS OTHERWISE NOTED

TRACT 22551

- ✗ FD. Ramset Nail on T/C
- FD. LD. & TK. on T/C
- FD. "C" Nail on T/C
- Set LD. & TK. on T/C

Street: SWEET BAY ROAD  
 753 S. TIE  
 X-Street: BARTON ST.

OFFICIAL USE ONLY

Scale:  
 Date:  
 Drawn by:  
 W.O.:  
 F.B.:

**OFFICIAL TIE PLAT**  
 CITY OF RIVERSIDE

*These ties are for the purpose of perpetuating the found monumentation. No claim is made as to the relationship of the points or lines shown hereon to true boundary locations.*

Sheet 1 of 1  
 File No.: