



J.F. Davidson Associates, Inc.
ENGINEERING PLANNING SURVEYING
ARCHITECTURE LANDSCAPE ARCHITECTURE

F.B. 11009/62

SURVEY OF 4 TIES TR 21834-2

SHT. 1 OF 3

FOR VAN DAELE

W.O. No. 11009

Date 28 JULY 89

SURVEY PARTY HOPKINS, CHACON

REF.

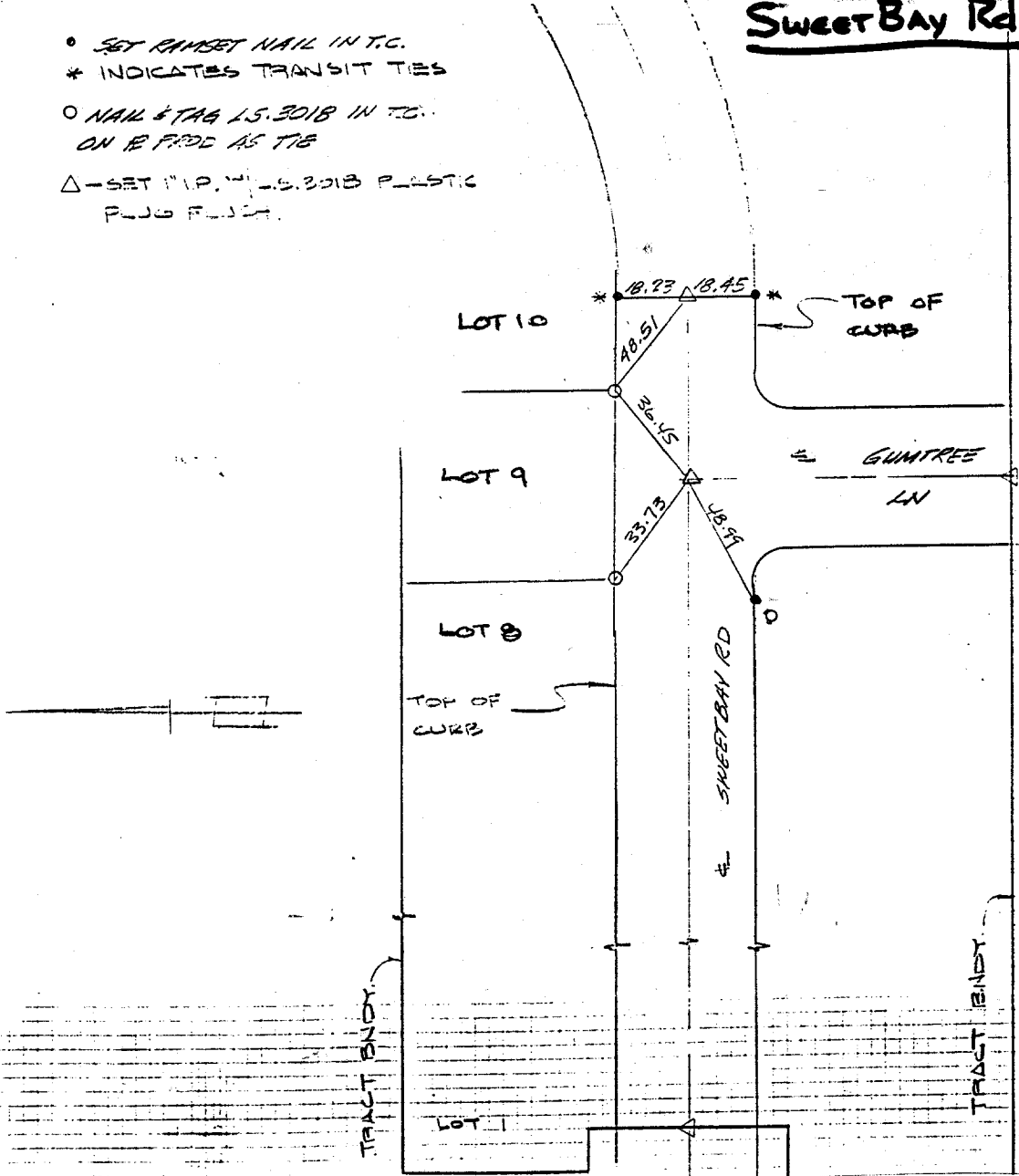
A.M.

SEE F.B. 11009/61 (SHT. 2)

- SET RAMSET NAIL IN T/C.
- * INDICATES TRANSIT TIES
- NAIL & TAG 1/2" S. 2018 IN T/C.
ON 1/2" P.P.D. AS TIE
- △ - SET 1/2" P.P.D. S. 2018 PLASTIC
PLUG FOUND.

Sweet Bay Rd

SURVEY NOTES



- × FD. Ramset Nail on T/C
- FD. "C" Nail on T/C

- FD. LD. & TK. on T/C
- Set LD. & TK. on T/C

Street: **SWEETBAY RD.**
7536. TIE

X-Street: **GUMTREE LN.**
OFFICIAL USE ONLY

Scale:

Date:

Drawn by:

W.O.:

F.B.:

OFFICIAL TIE PLAT

CITY OF RIVERSIDE

These ties are for the purpose of perpetuating the found monumentation. No claim is made as to the relationship of the points or lines shown hereon to true boundary locations.

Sheet 1 of 1

File No.: