

* SWING TIES *

HISTORICAL DATA:
CRFB 610/75

Street:

7541. TIF KEITH ST.

OFFICIAL USE ONLY

X-Street:

SUN CT.

COURT

SET PK. NAIL
& CITY ENGR
TAG, FLUSH

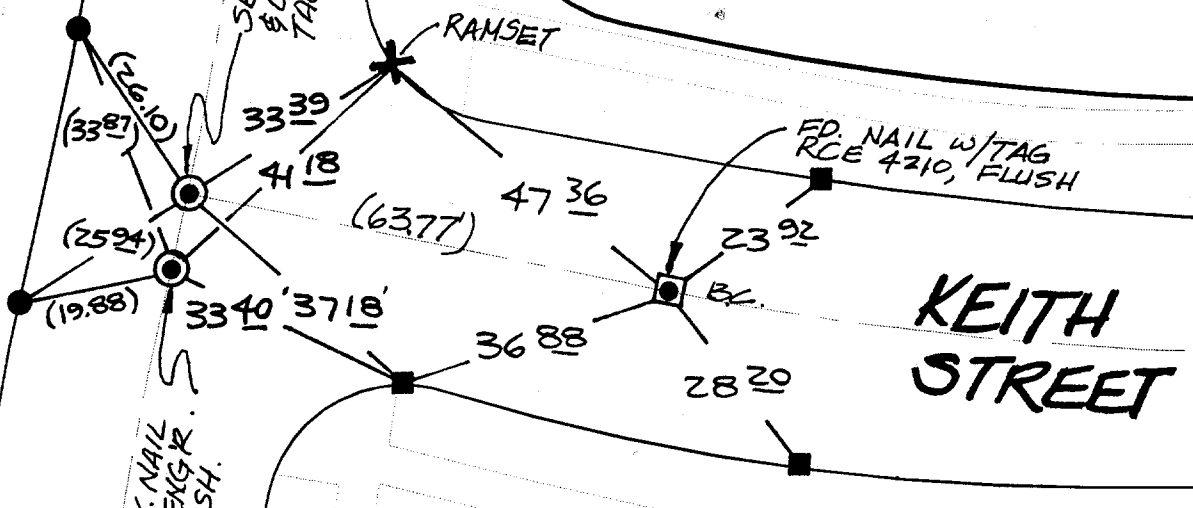
RAMSET

FD. NAIL w/TAG
RCE 4210, FLUSH

KEITH
STREET

SUN

SET PK. NAIL
& CITY ENGR.
TAG, FLUSH.



× FD. Ramset Nail on T/C
■ FD. "C" Nail on T/C

● FD. LD. & TK. on T/C
○ Set LD. & TK. on T/C

Scale: 1" = 25'

Date: 12/03/99

Drawn by: survey *JS*

W.O.:

F.B.:

OFFICIAL TIE PLAT CITY OF RIVERSIDE

These ties are for the purpose of perpetuating the found monumentation. No claim is made as to the relationship of the points or lines shown hereon to true boundary locations.



Sheet 1 of 1

File No.: