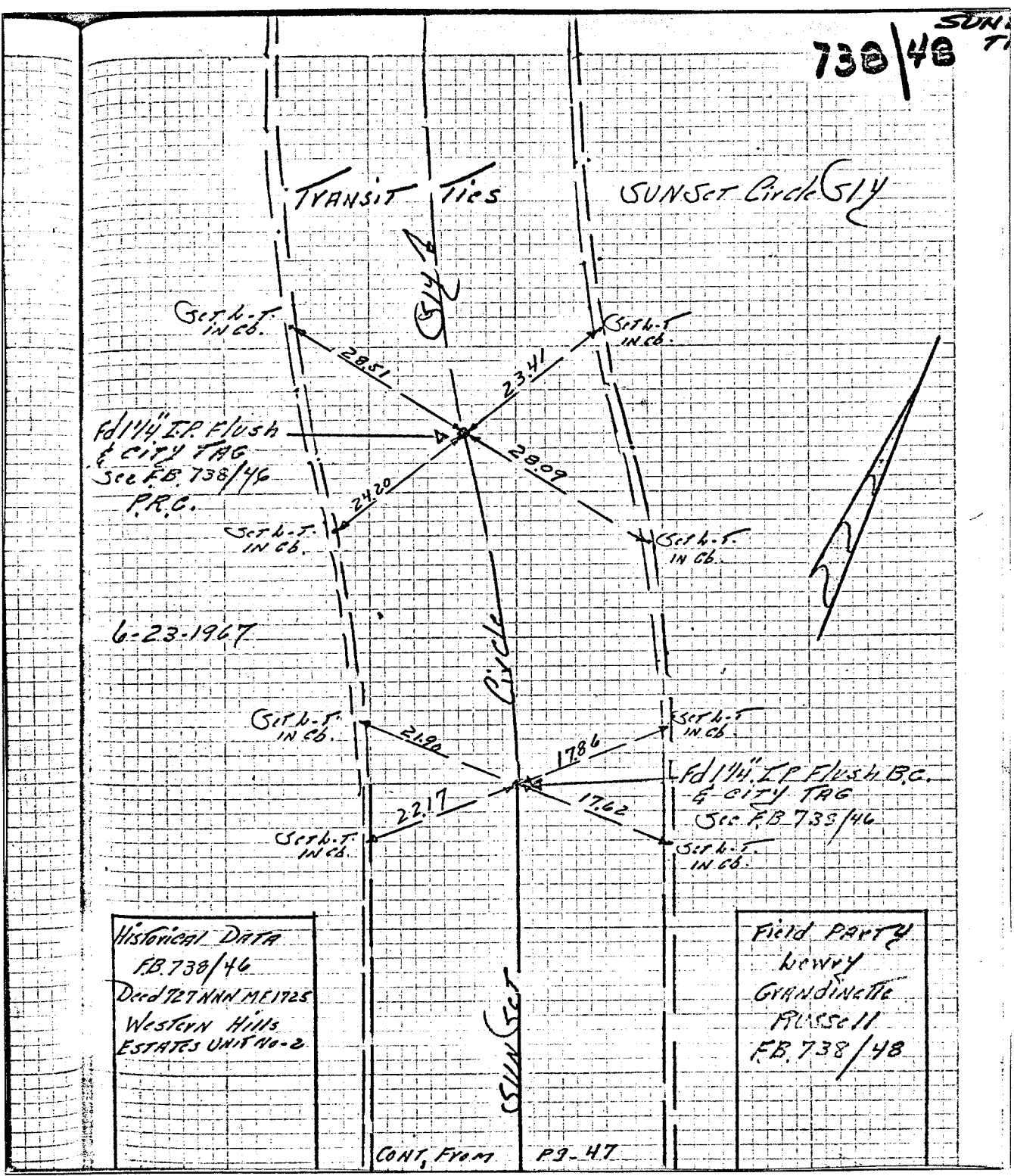


Street: SUNSET CIRCLE
738/48
7557.71E

X-Street: BC. & PRE.

OFFICIAL USE ONLY



Historical DATA
 F.B. 738/46
 Deed 727 ANN ME 1925
 Western Hills
 ESTATES UNIT NO-2

Field PARTY
 NEWBY
 GRANDINETTE
 RUSSELL
 F.B. 738/48

CONT. FROM PG. 47

- ✕ FD. Ramset Nail on T/C
- FD. LD. & TK. on T/C
- FD. "C" Nail on T/C
- Set LD. & TK. on T/C

Scale:
 Date:
 Drawn by:
 W.O.:
 F.B.:

OFFICIAL TIE PLAT
CITY OF RIVERSIDE

These ties are for the purpose of perpetuating the found
 monumentation. No claim is made as to the relationship of
 the points or lines shown hereon to true boundary locations.

Sheet 1 of 1
 File No.: