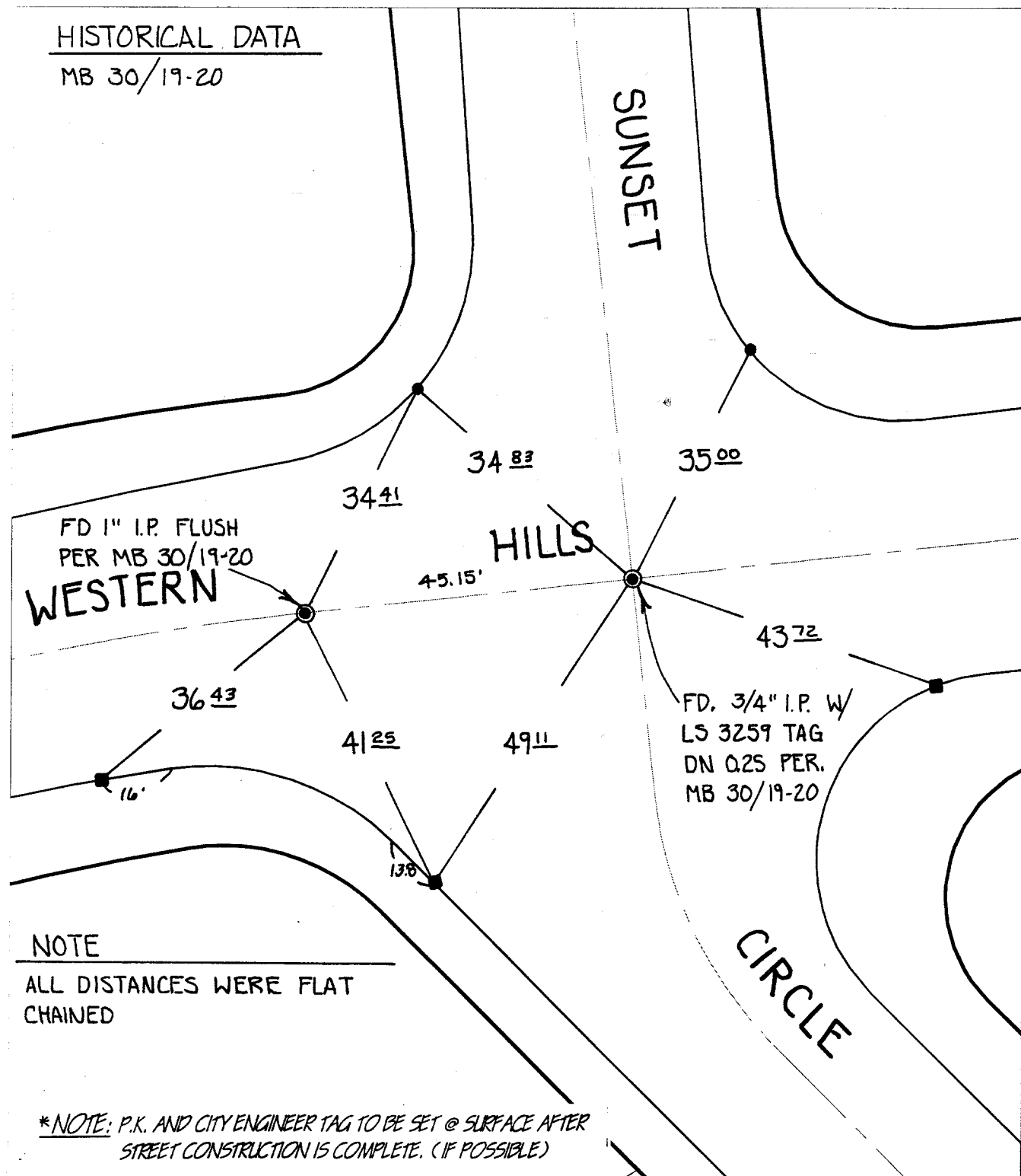


SWING TIES

HISTORICAL DATA

MB 30/19-20



Street:

WESTERN HILLS DRIVE
7558 TIE

X-Street:
OFFICIAL USE ONLY

SUNSET CIRCLE

NOTE

ALL DISTANCES WERE FLAT CHAINED

*NOTE: P.K. AND CITY ENGINEER TAG TO BE SET @ SURFACE AFTER STREET CONSTRUCTION IS COMPLETE. (IF POSSIBLE)

- ✕ FD. Ramset Nail on T/C
- FD. "C" Nail on T/C

- FD. LD. & TK. on T/C
- Set LD. & TK. on T/C

Scale: 1" = 20'

Date: 06/23/00

Drawn by: SURVEY

W.O.:

F.B.:

OFFICIAL TIE PLAT

CITY OF RIVERSIDE

These ties are for the purpose of perpetuating the found monumentation. No claim is made as to the relationship of the points or lines shown hereon to true boundary locations.



Sheet 1 of 1

File No.: