

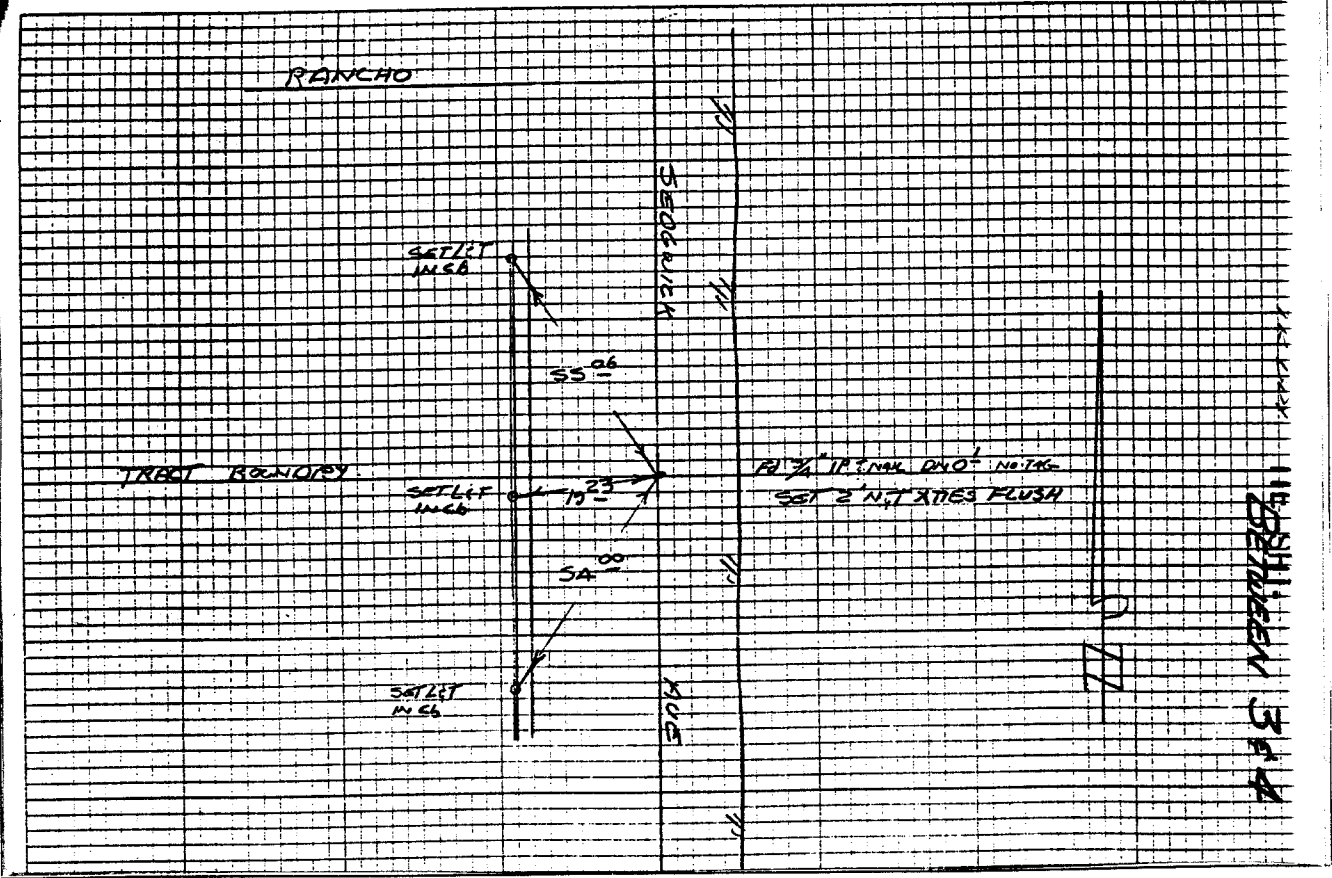
Street: SEDGWICK AVE  
7574 TIE  
 (BTW) X-Street: CARLTON & RANCHO  
 OFFICIAL USE ONLY

| HISTORICAL DATA |
|-----------------|
| MA 23/3         |
| MA 2A/20        |

SEDGWICK AVE  
SWING TIES  
BET CARLTON & RANCHO

CRFB 977/37

|      |                              |
|------|------------------------------|
| DATE | JAN 14 1976                  |
| CREW | THORP<br>MONTPLANE<br>CRAMER |



- ✕ FD. Ramset Nail on T/C
- FD. LD. & TK. on T/C
- FD. "C" Nail on T/C
- Set LD. & TK. on T/C

Scale:  
 Date:  
 Drawn by:  
 W.O.:  
 F.B.: 977 /37

## OFFICIAL TIE PLAT

### CITY OF RIVERSIDE

*These ties are for the purpose of perpetuating the found monumentation. No claim is made as to the relationship of the points or lines shown hereon to true boundary locations.*

Sheet 1 of 1  
 File No.: