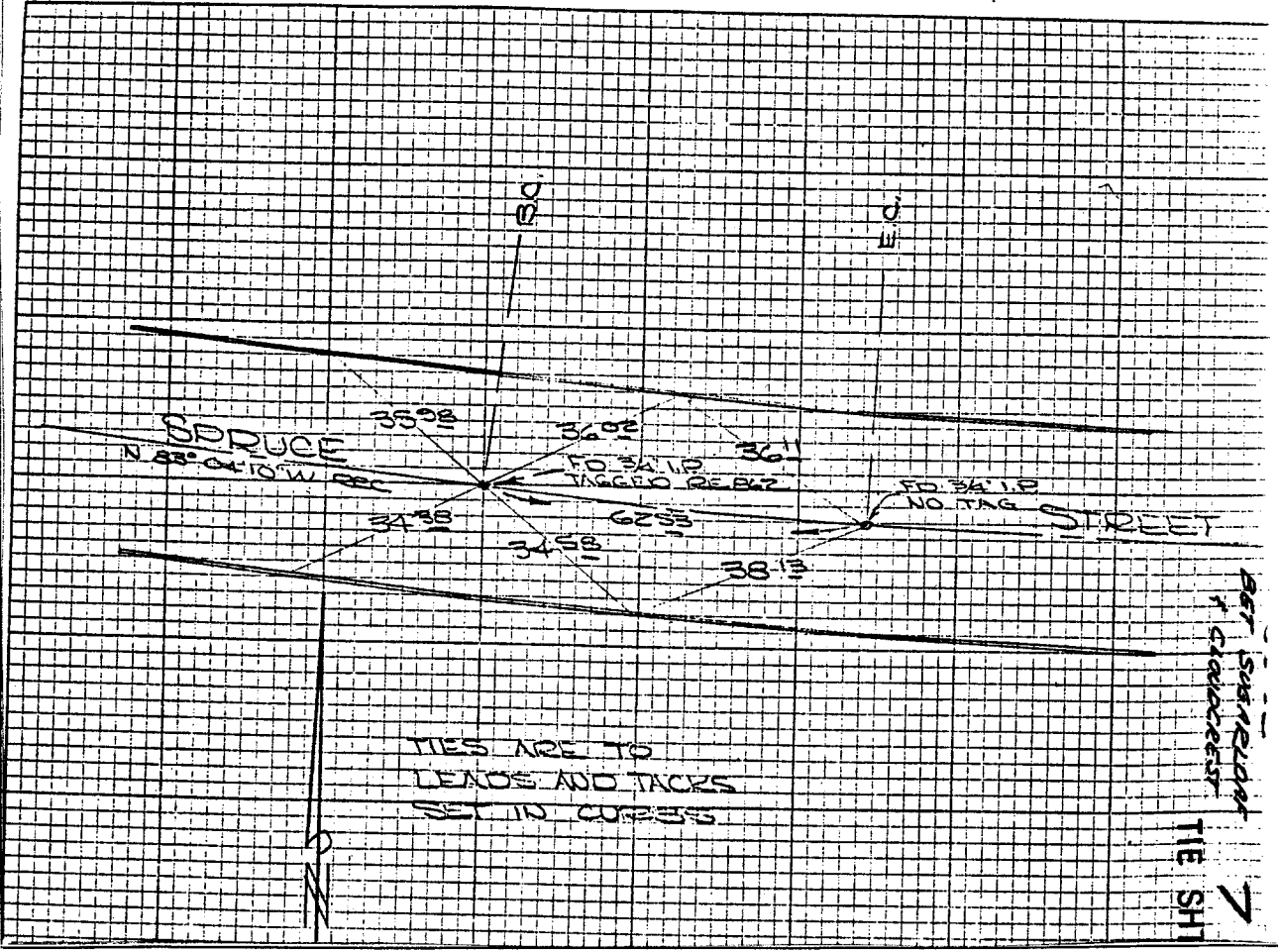


Street: **SPRUCE ST.**
759 S. TIE

(BTW) X-Street: **CLOUDCREST & SUGARLOAF DR.**
 OFFICIAL USE ONLY

HISTORICAL DATA UNIVERSITY HIGHWAY UNIT NO. 2		TRAVEL TIES	CREW: STEELE FROY RUSSELL MAY 26, '71 CRB/SKA/KA
--	--	-------------	---



- ✕ FD. Ramset Nail on T/C
- FD. LD. & TK. on T/C
- FD. "C" Nail on T/C
- Set LD. & TK. on T/C

Scale:
 Date: *MAY 26, 71*
 Drawn by:
 W.O.:
 F.B.: *944/44*

OFFICIAL TIE PLAT
CITY OF RIVERSIDE

These ties are for the purpose of perpetuating the found monumentation. No claim is made as to the relationship of the points or lines shown hereon to true boundary locations.

Sheet 1 of 1
 File No.: