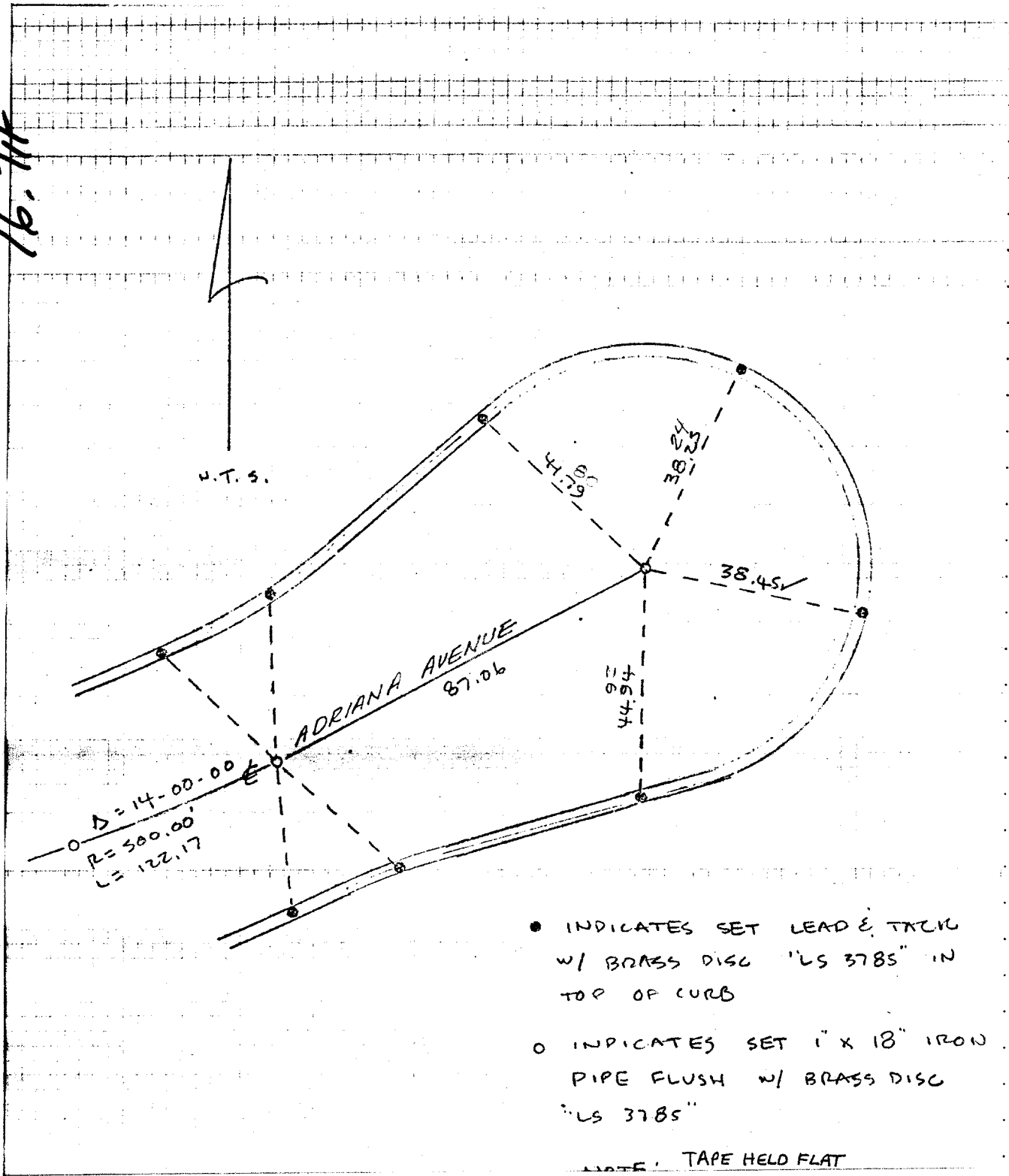


76.71F



- INDICATES SET LEAD & T/C W/ BRASS DISC "LS 3785" IN TOP OF CURB
- INDICATES SET 1" X 18" IRON PIPE FLUSH W/ BRASS DISC "LS 3785"

NOTE: TAPE HELD FLAT

- × FD. Ramset Nail on T/C
- FD. LD. & TK. on T/C
- SET LD. & TK. On T/C
- FD. "C" Nail on T/C

SCALE:
DATE:
DR. BY:
W.O.:
F.B.:

**OFFICIAL TIE PLAT**  
 CITY OF RIVERSIDE

*These ties are for the purpose of perpetuating the found monumentation. No claim is made as to the relationship of the points or lines shown hereon to true boundary locations.*

SHEET	
OF	SHEETS
FILE NO.:	