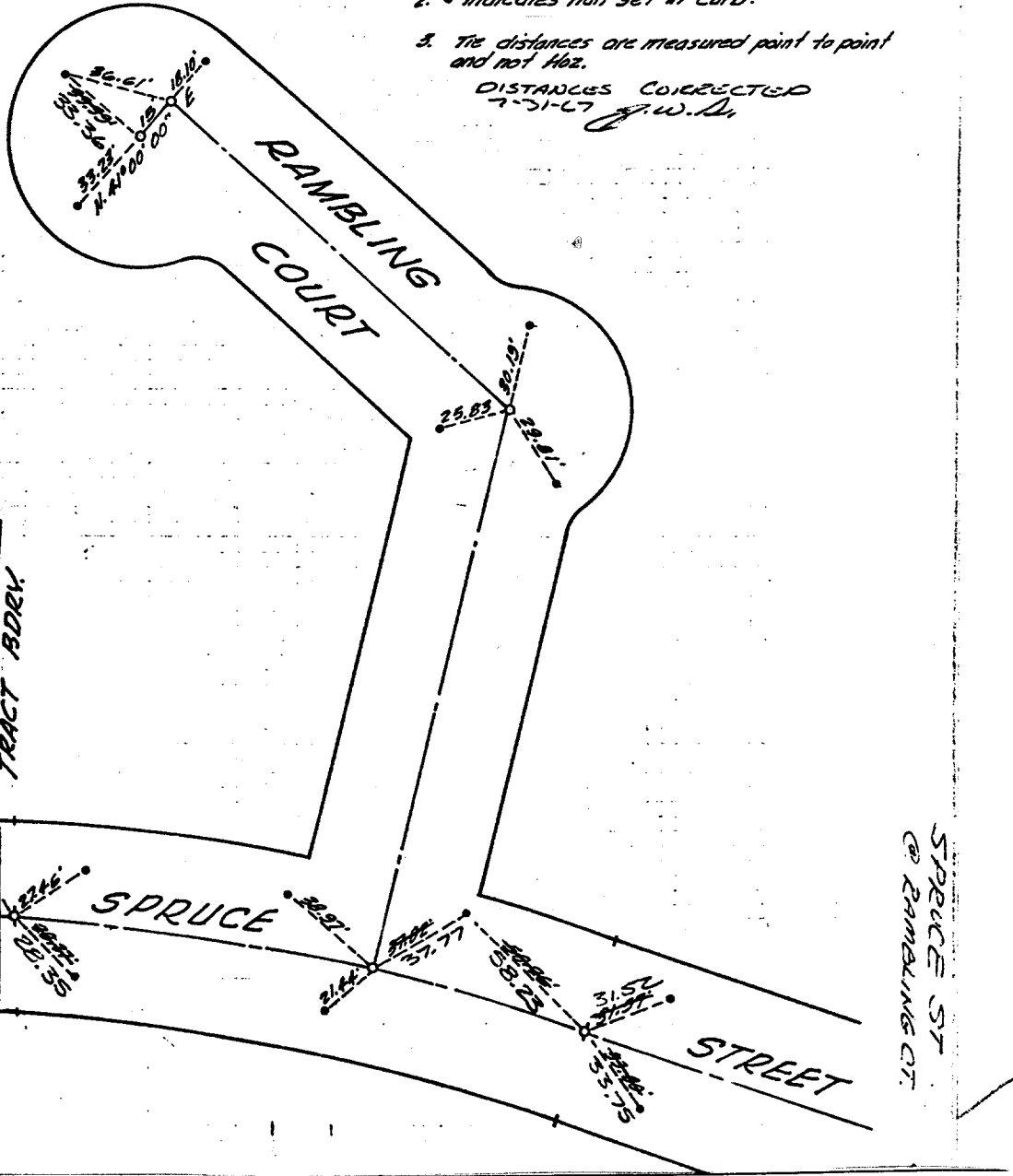


TRACT NO. 3492

NOTES:

1. ○ Indicates 3/4" I.P. set per M.B. 56/75, 76 & 77
2. ● Indicates nail set in curb.
3. Tie distances are measured point to point and not hor.

DISTANCES CORRECTED
7-31-67 J.W.D.



Street: SPRUCE ST.
7622 TIE
 X-Street: RAMBLING COURT
 OFFICIAL USE ONLY

✕ FD. Ramset Nail on T/C
 ■ FD. "C" Nail on T/C

● FD. LD. & TK. on T/C
 ○ Set LD. & TK. on T/C

Scale:
 Date:
 Drawn by:
 W.O.:
 F.B.:

OFFICIAL TIE PLAT CITY OF RIVERSIDE

These ties are for the purpose of perpetuating the found monumentation. No claim is made as to the relationship of the points or lines shown hereon to true boundary locations.

TRACT 3492

Sheet 1 of 1
 File No.: