

TRACT NO. 3492

Street: SPRUCE ST
7626.TIF

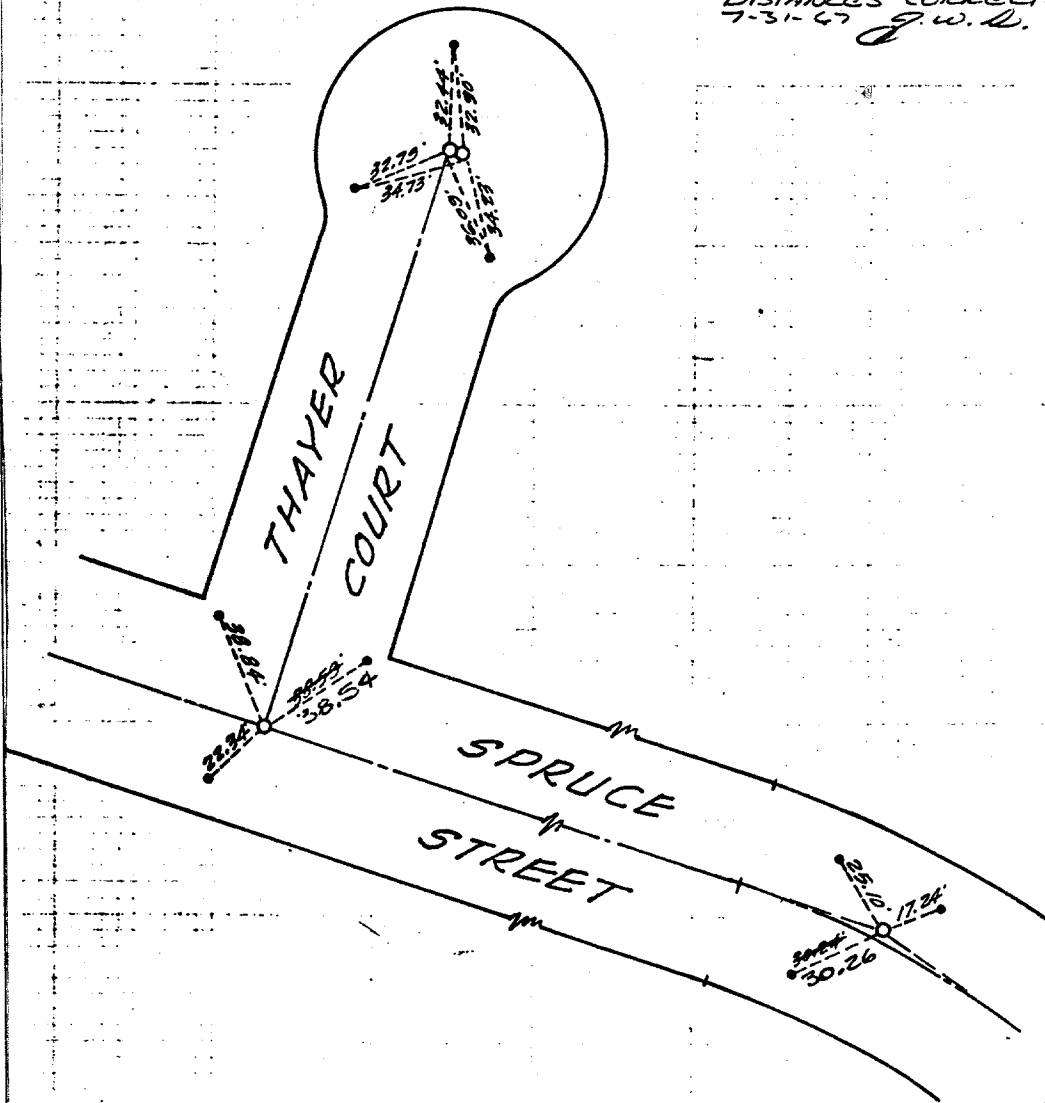
X-Street: THAYER COURT
OFFICIAL USE ONLY



NOTES:

- Indicates 3/4" I.P. set per M.B. 56/75, 76, 77
- Indicates nail set in curb
- Tie distances are measured point to point and not horz.

DISTANCES CORRECTED
7-31-47 G.W.D.



SPRUCE ST.
@ THAYER

- ✕ FD. Ramset Nail on T/C
- FD. LD. & TK. on T/C
- FD. "C" Nail on T/C
- Set LD. & TK. on T/C

Scale: _____
 Date: _____
 Drawn by: _____
 W.O.: _____
 F.B.: _____

OFFICIAL TIE PLAT CITY OF RIVERSIDE

These ties are for the purpose of perpetuating the found monumentation. No claim is made as to the relationship of the points or lines shown hereon to true boundary locations.

TRACT 3492

Sheet 1 of 1
File No.: