

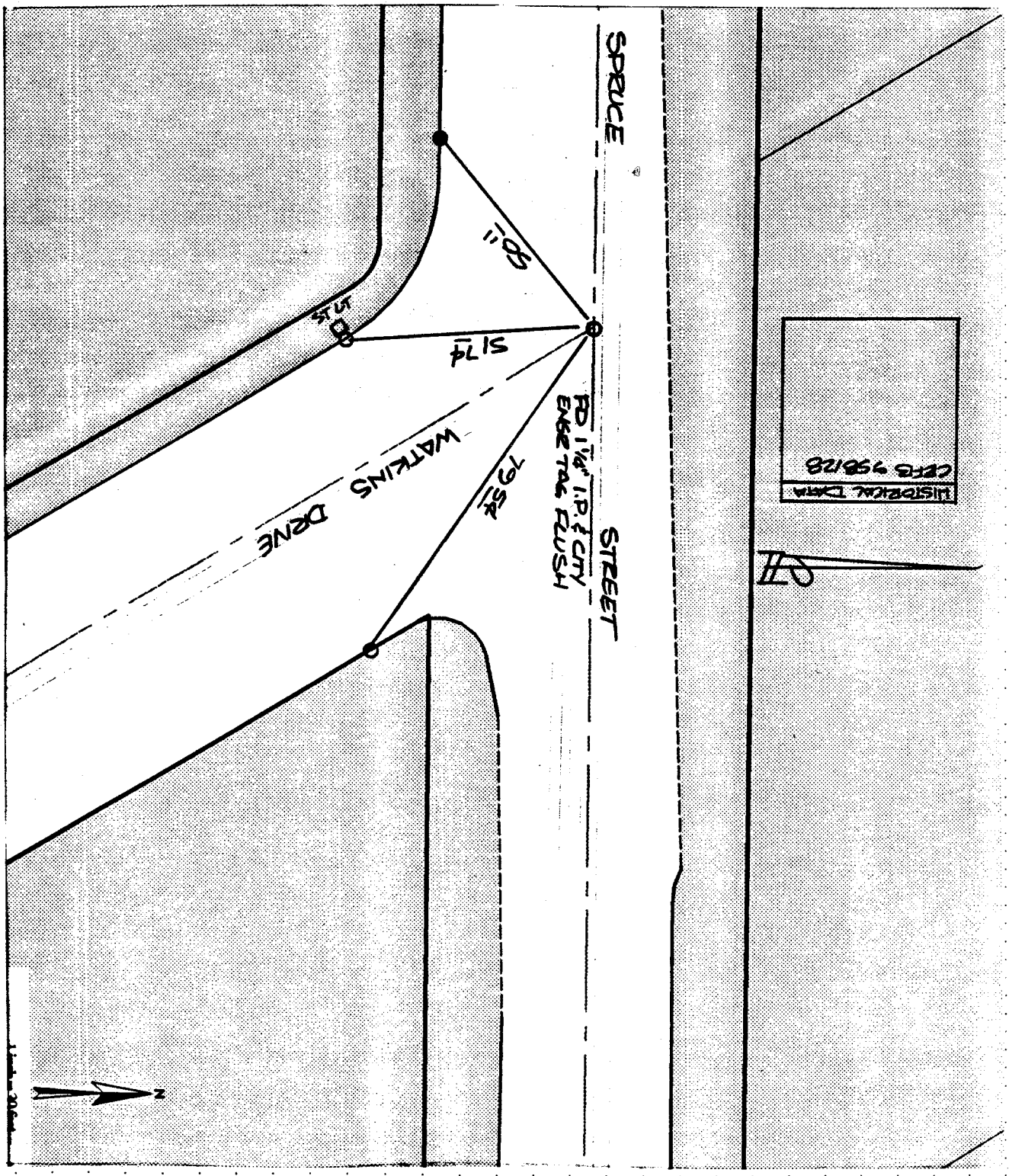
SCALE: 1" = 30'  
 DATE: 11/17  
 DR. BY: [Signature]  
 W.O.:  
 F.B.:

OFFICIAL TIE PLAT  
 CITY OF RIVERSIDE  
 These ties are for the purpose of perpetuating the found  
 monumentation. No claim is made as to the relationship of  
 the points or lines shown hereon to true boundary locations.

FILE NO.:  
 OF 1 SHEETS  
 SHEET

STREET 7629 TIE  
 SPRUCE ST  
 X-STREET WATKINS DR  
 OFFICE USE ONLY  
 [Signature]

X FD. Ramset Nail on T/C  
 ■ FD. "C" Nail on T/C  
 ● FD. LD. & TK. on T/C  
 ○ SET LD. & TK. on T/C



11-1-20-64