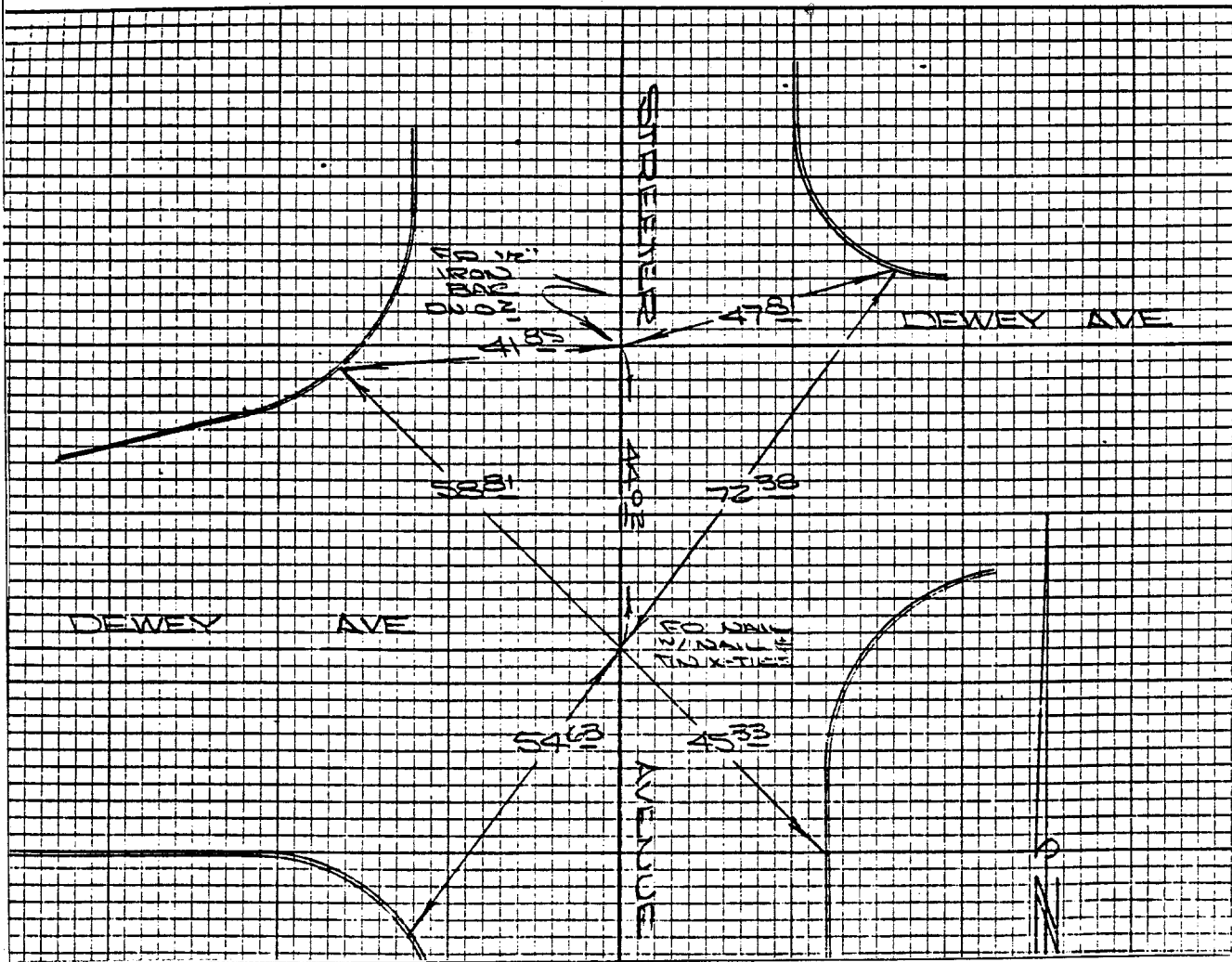


Street: **STREETER AVE**  
**7641. TIF**

X-Street: **DEWEY AVE**  
 OFFICIAL USE ONLY

HISTORICAL DATA	TRANSIT & SWING TIES	CREW
FB 533/5		STEELE
FB 860/51		FRY
		RUSSELL
		MARCH, 1952
		FB 940/68

Field OK  
 6/19- Dargatzis



- ✕ FD. Ramset Nail on T/C
- FD. LD. & TK. on T/C
- FD. "C" Nail on T/C
- Set LD. & TK. on T/C

Scale:  
 Date:  
 Drawn by:  
 W.O.:  
 F.B.: **940/68**

## OFFICIAL TIE PLAT

### CITY OF RIVERSIDE

*These ties are for the purpose of perpetuating the found monumentation. No claim is made as to the relationship of the points or lines shown hereon to true boundary locations.*

Sheet 1 of 1  
 File No.: