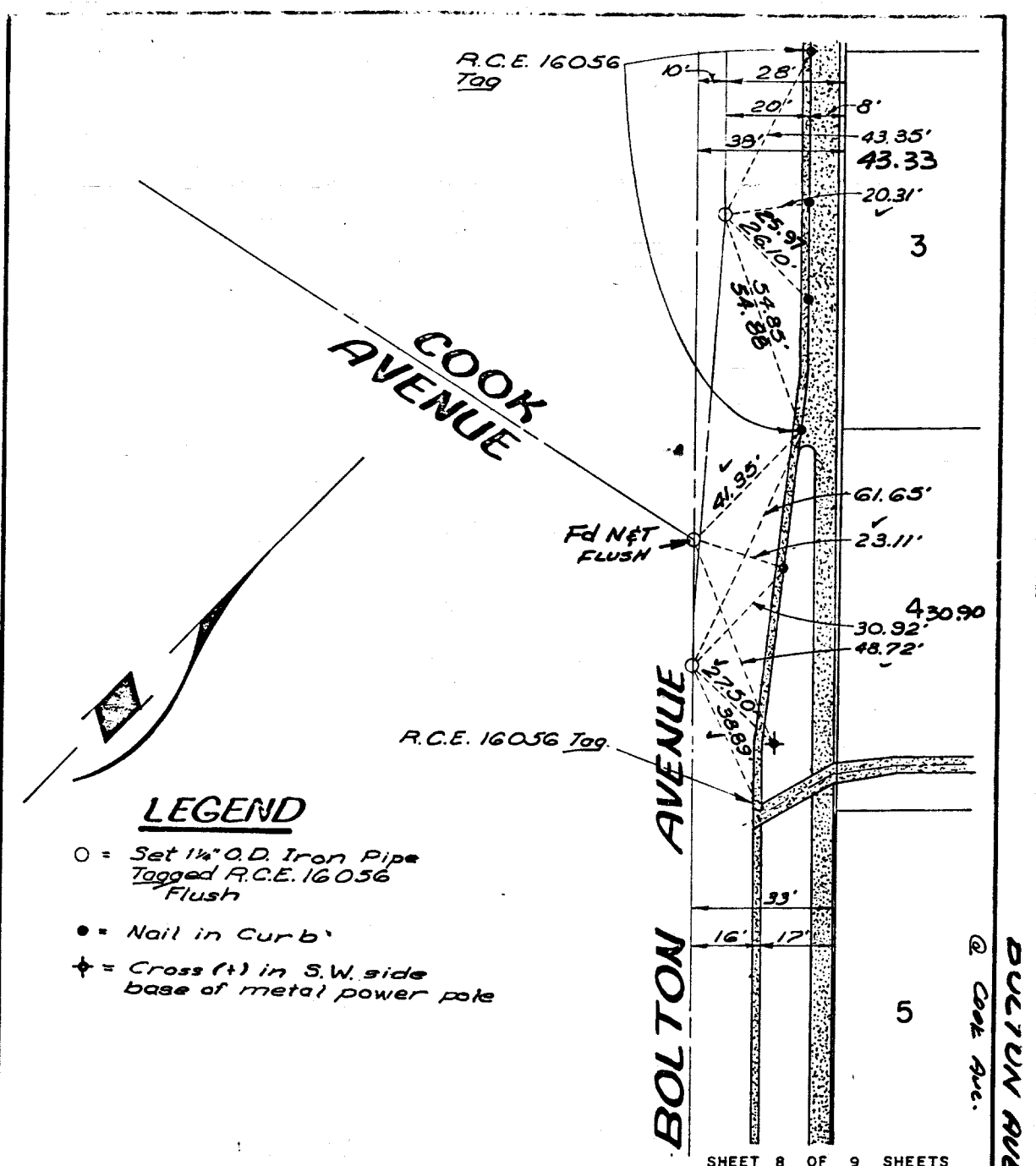


765.77F

Street: BOLTON AVE
765.77E

X-Street: COOK AVE
OFFICIAL USE ONLY



LEGEND

- = Set 1 1/2" O.D. Iron Pipe Tagged R.C.E. 16056 Flush
- = Nail in Curb
- ✦ = Cross (†) in S.W. side base of metal power pole

SHEET 8 OF 9 SHEETS

L A WAINSCOTT & ASSOCIATES
 CIVIL ENGINEERS
 GRAND TERRACE, CALIFORNIA
 (714) 824-1775

CITY OF RIVERSIDE
TRACT NO. 8492
 TIE SHEET W.O. 021-01

- ✕ FD. Ramset Nail on T/C
- FD. LD. & TK. on T/C
- FD. "C" Nail on T/C
- Set LD. & TK. on T/C

Scale:
 Date:
 Drawn by:
 W.O.:
 F.B.:

OFFICIAL TIE PLAT
 CITY OF RIVERSIDE

These ties are for the purpose of perpetuating the found monumentation. No claim is made as to the relationship of the points or lines shown hereon to true boundary locations.

Sheet **8** of **9**
 File No.: