

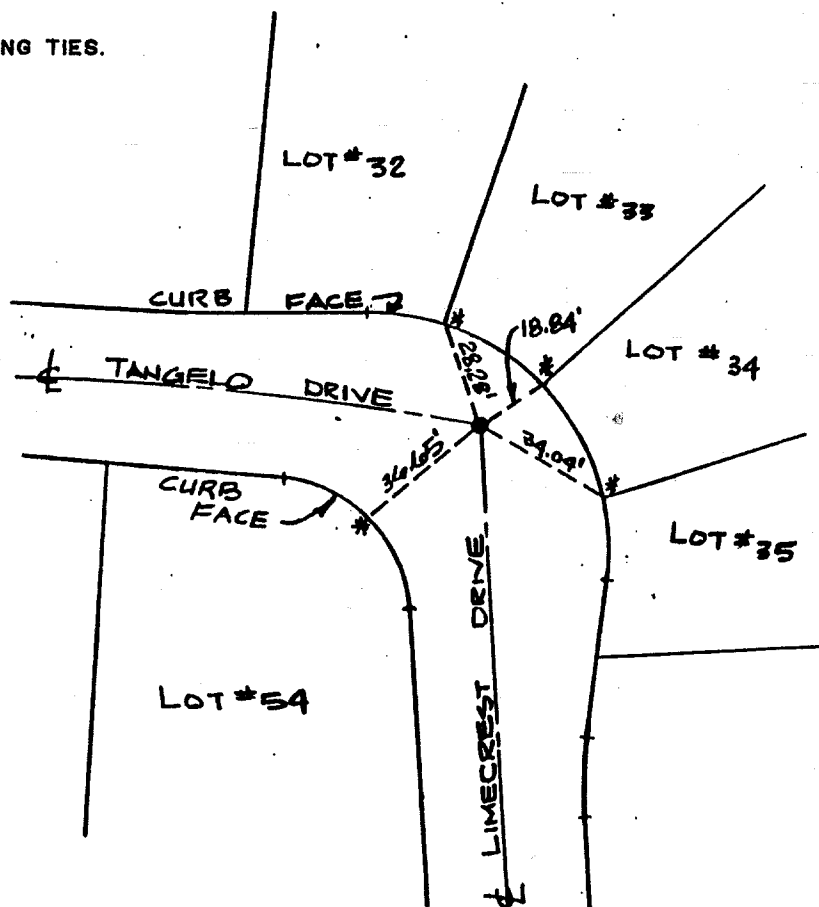
Street: TANGELO DR.
7683. TIF

X-Street: _____
OFFICIAL USE ONLY

LIMECREST DR.

TANGELD DR. @
LIMECREST DR.

NOTE :
ALL TIES ARE SWING TIES.



- * SET RAMSET NAIL IN CURB
- SET 1" IRON PIPE, TAGGED LS 5306

TRACT NO. 19958-1
CENTERLINE TIES

SOUTHLAND ENGINEERING

2501 RUBIDOUX BLVD. SUITE B
RIVERSIDE, CALIFORNIA, 92509
PH. (714) 788-8488

Scale: N.T.S.

Date: OCT. 1988

- × FD. Ramset Nail on T/C
- FD. "C" Nail on T/C

- FD. LD. & TK. on T/C
- Set LD. & TK. on T/C

Scale:

Date:

Drawn by:

W.O.:

F.B.:

OFFICIAL TIE PLAT

CITY OF RIVERSIDE

These ties are for the purpose of perpetuating the found monumentation. No claim is made as to the relationship of the points or lines shown hereon to true boundary locations.

Sheet 1 of 1

File No.: