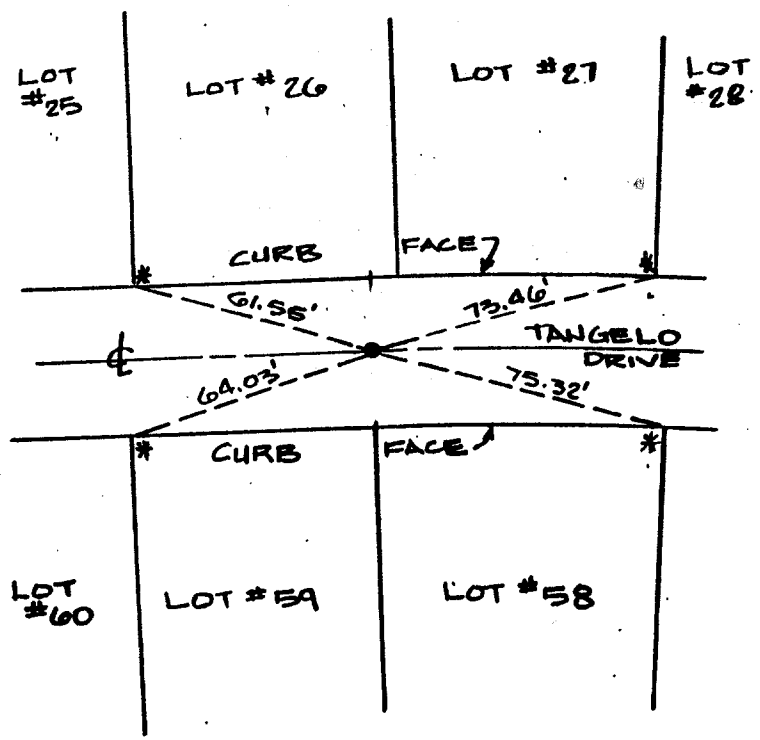


Street: TANGELO DRIVE (BTW) X-Street: LIMECREST & MANDENIN  
7684% TIF OFFICIAL USE ONLY

NOTE :  
 ALL TIES ARE SWING TIES.



- \* SET RAMSET NAIL IN CURB
- SET 1" IRON PIPE, TAGGED LS 5306

TANGELO DR. D.C. BETWEEN MANDENIN & LIMECREST

TRACT NO. 19958-1  
 CENTERLINE TIES

**SOUTHLAND ENGINEERING**  
 2501 RUBIDOUX BLVD. SUITE B  
 RIVERSIDE, CALIFORNIA, 92509  
 PH. (714) 788-8488

Scale: N.T.S. Date: OCT. 1988

- ✕ FD. Ramset Nail on T/C
- FD. LD. & TK. on T/C
- FD. "C" Nail on T/C
- Set LD. & TK. on T/C

Scale:  
 Date: OCT 1988  
 Drawn by:  
 W.O.:  
 F.B.:

**OFFICIAL TIE PLAT**  
 CITY OF RIVERSIDE

*These ties are for the purpose of perpetuating the found monumentation. No claim is made as to the relationship of the points or lines shown hereon to true boundary locations.*

TRACT 19958-1  
 Sheet 4 of 13  
 File No.: