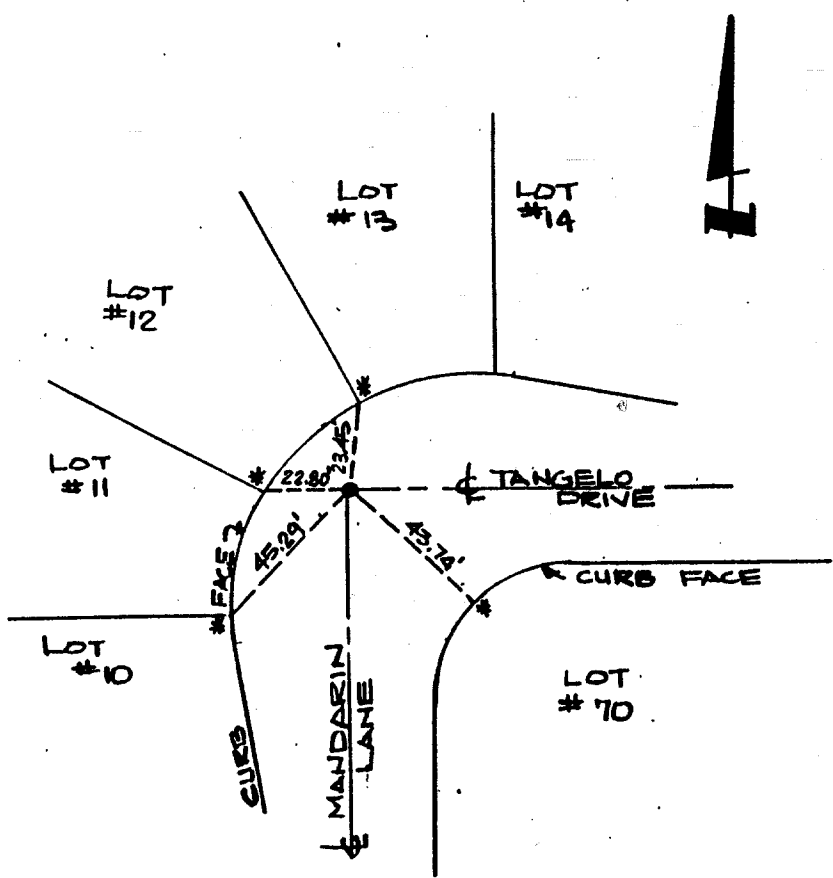


Street: TANGELO DRIVE

7685 TIF

OFFICIAL USE ONLY

X-Street: MANDARIN LN.



NOTE :
ALL TIES ARE SWING TIES.

- * SET RAMSET NAIL IN CURB
- SET 1" IRON PIPE, TAGGED LS 5306

TRACT NO. 19958-1
CENTERLINE TIES

SOUTHLAND ENGINEERING
2501 RUBIDOUX BLVD. SUITE B
RIVERSIDE, CALIFORNIA, 92509
PH. (714) 788-8488

File: N.T.S. Date: OCT. 1988

- ✕ FD. Ramset Nail on T/C
- FD. LD. & TK. on T/C
- FD. "C" Nail on T/C
- Set LD. & TK. on T/C

OFFICIAL TIE PLAT

CITY OF RIVERSIDE

These ties are for the purpose of perpetuating the found monumentation. No claim is made as to the relationship of the points or lines shown hereon to true boundary locations.

Scale:

Date:

Drawn by:

W.O.:

F.B.:

Sheet 1 of 1
File No.: