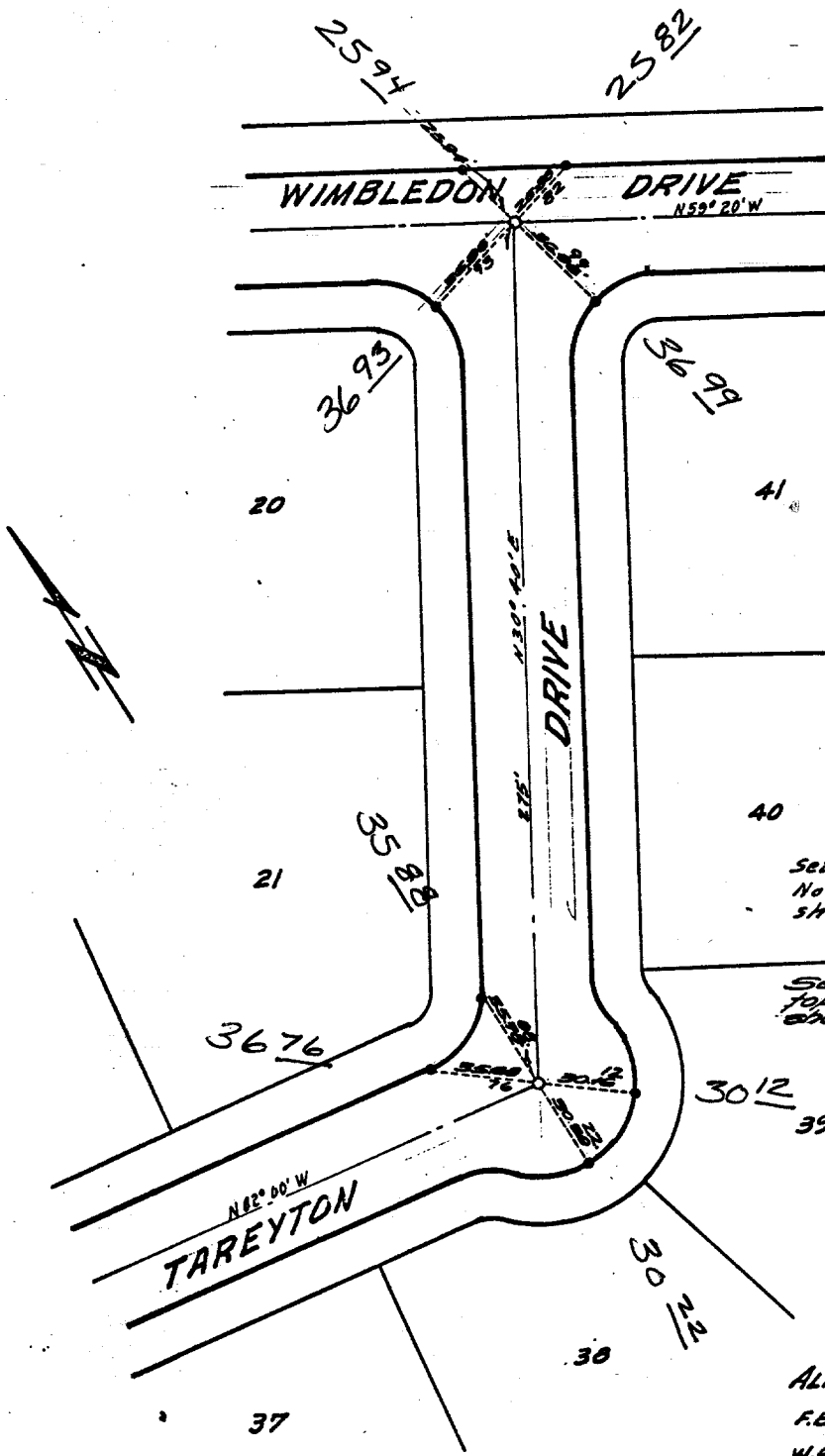


Street: TAREYTON DRIVE
7688. TIP

X-Street: WIMBLEDON
OFFICIAL USE ONLY

TAREYTON DR.

WIMBLEDON DRIVE
N59°20'W



Set monuments per Ordinance No. 461, Std. No. 42 at all points shown thus ○.

Set "SURE FIRE" studs in top of curb of all points shown thus ●.

TAREYTON DR.
- THE SWT -
@ Wimbledon

ALBERT A. WEBB Assoc.
F.B. 675/11
W.A. 64-270

Sheet 2 of 4

- × FD. Ramset Nail on T/C
- FD. "C" Nail on T/C

- FD. LD. & TK. on T/C
- Set LD. & TK. on T/C

Scale:
Date:
Drawn by:
W.O.: 64-270
F.B.: 675/11

OFFICIAL TIE PLAT CITY OF RIVERSIDE

These ties are for the purpose of perpetuating the found monumentation. No claim is made as to the relationship of the points or lines shown hereon to true boundary locations.

TRACT 3824

Sheet 2 of 4
File No.: