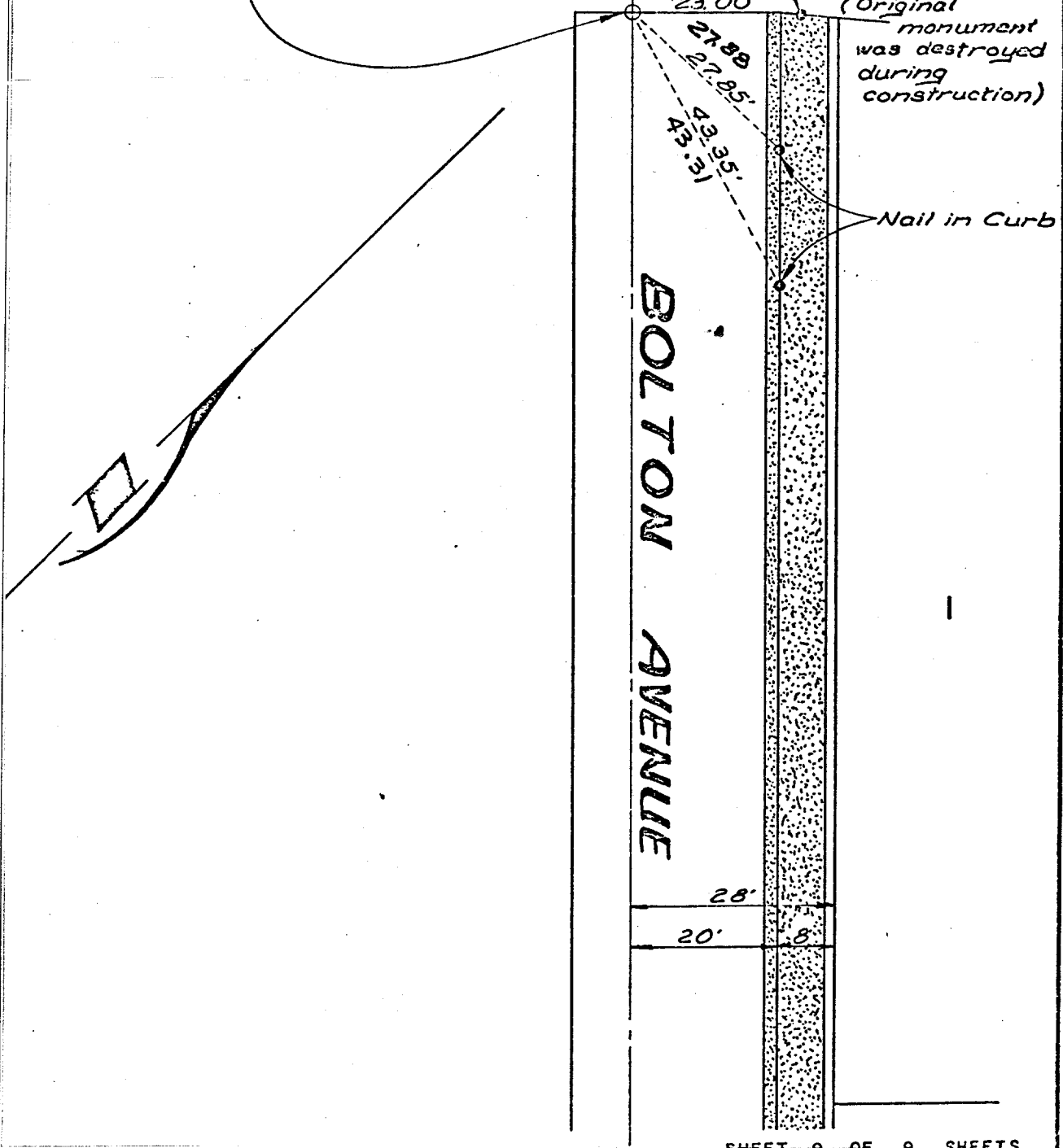


770.77F

Set 1 1/4" O.D. Iron Pipe
tagged R.C.E. 16056
Flush
@ TR. BDY

Set R.C.E.
16056 tag
and nail in
sidewalk
(Original
monument
was destroyed
during
construction)



Street: BOLTON AVE
770.77F

X-Street: _____
OFFICIAL USE ONLY

- ✕ FD. Ramset Nail on T/C
- FD. "C" Nail on T/C
- FD. LD. & TK. on T/C
- Set LD. & TK. on T/C

Scale: _____
 Date: _____
 Drawn by: _____
 W.O.: _____
 F.B.: _____

OFFICIAL TIE PLAT
CITY OF RIVERSIDE

These ties are for the purpose of perpetuating the found monumentation. No claim is made as to the relationship of the points or lines shown hereon to true boundary locations.

TRACT NO. 8492

Sheet **9** of **9**

File No.: _____

SHEET 9 OF 9 SHEETS

SIDEWALK